



JDV
CONTROL
VALVES



JBT Series

Trunnion Type **Soft Metal** Seat Ball Valve



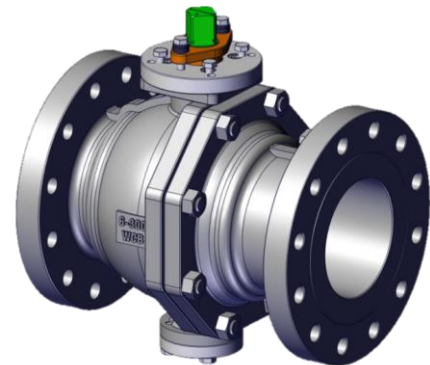
*We link all you need
and more than you expect.*

JBT-E JBT-EM / JBT-B / JBT-BM

Trunnion Type **Soft Metal** Seat Ball Valve

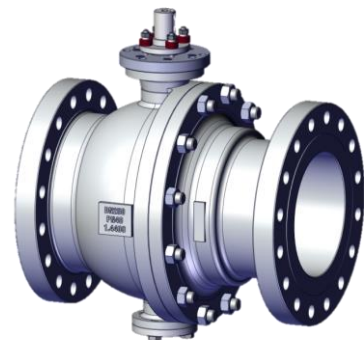
Industrial Fields

Power Oil & Gas
Refinery / Petrochemical
Chemical
Pulp & paper
Power plant
Steel Mill
Food
Mining
LNG



Applicable Standards

ASME B16.34 / B16.10 / B16.5
DIN EN12266-1 / EN558(S14 S15) / EN1092-1
API 6D DESIGN
PED 97/23/EC
Fire-safe: API 607, API6FA , ISO 10497
FE (Fugitive Emission): ISO 15848,
Anti-static: DIN EN ISO 17292
Cryogenic: BS 6364 / ISO 28921



Size Range

1-1/2" ~14"

Rating

150~300LB / PN 16 ~40

Configurations

- Extreme High Cycle

Stem supported in bearings to ensure seals are free from operation loads. Special bearing configurations, including cladding of critical areas and trim coating configurations, improve valve life-time.

- Temperature

Designed for temperatures -196 to 816°C

- Severe Service

Process optimized coatings, cladding option and wearing protection feature for extended ball valve life-time.

- Special Alloys

Process and application related special alloys

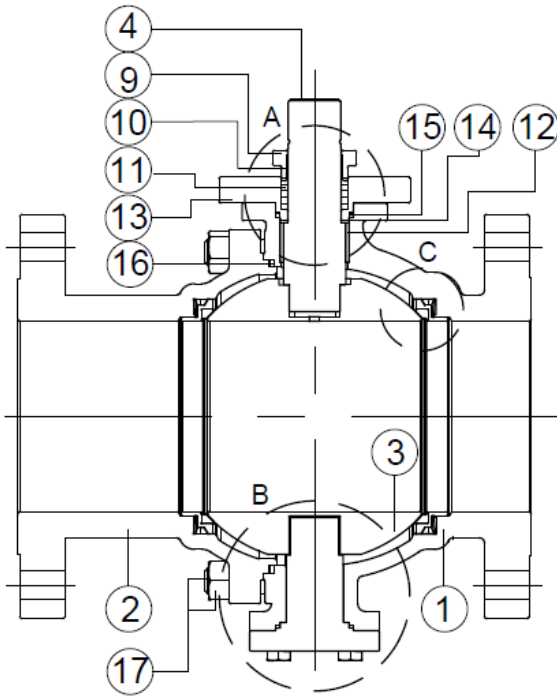
- True bi-direction design and wide temp. Range satisfying all application
- Cavity pressure relief design protecting against any excess of pressure in the body cavity
- Trunnion ball design ensuring a tight contact between seats and ball
- Spe seat that guarantees the self-relief of body cavity in case of overpressure
- Dpe seat design in option
- Optional drain plug device to empty the cavity or to detect any leakage
- Antistatic device
- ISO 5211 mounting pad design



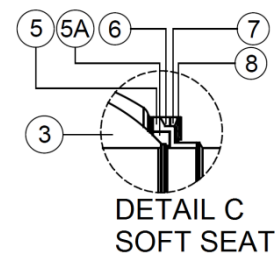
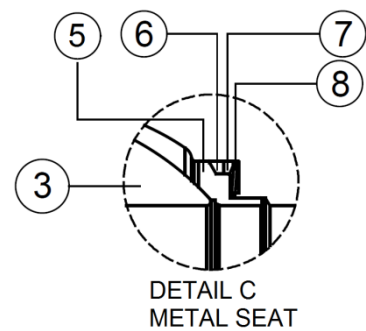
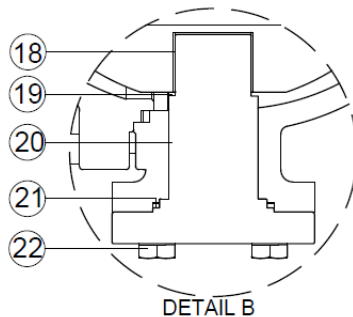
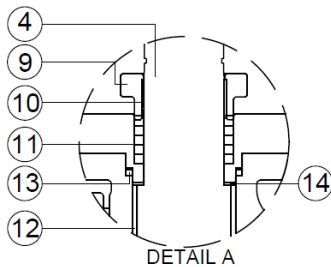
Construction & Material

CLASS 150~300 / PN 16 ~40

1-1/2"~ 8" TRUNNION STEM TYPE

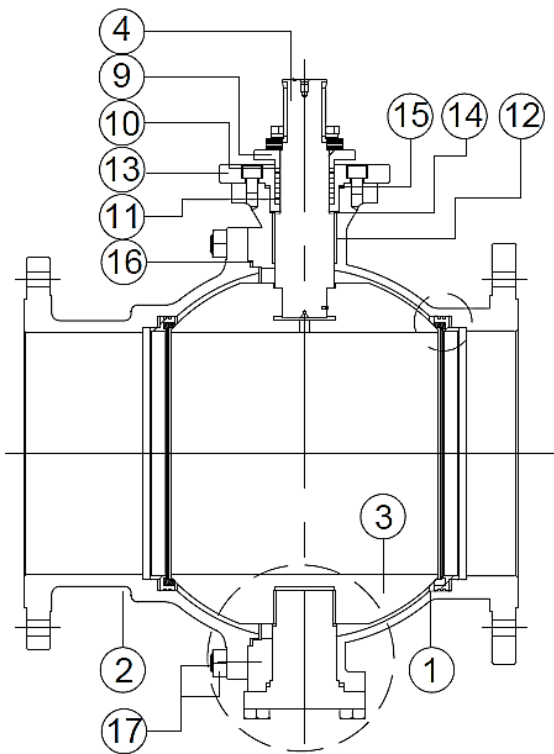


ITEM	PART NAME	MATERIAL
1	Body	A216-WCB A351-CFB A351-CF8M.
2	CAP	A216-WCB A351-CFB A351-CF8M.
3	BALL	A351 CF8 / CF8M
4	Stem	304/316/2205 17-4PH A286
5	Seat	304/316/2205...
5A	Seat insert	R-TFE TFM-1600 Devlon Nylon ...
6	Seat gasket	Graphite
7	Seat retainer	AISI 316 S/S
8	Spring	inconel X 750
9	Gland	A351-CF8
10	Gland bearing	SS W/PTFE
11	Stem packing	Graphite
12	Setm bearing	DU bearing / SS W/ HF
13	Stem retainer	304/316/F51...
14	Stem thrust washer	DU bearing / SS W/ HF
15	Stem retainer gasket	Graphite / PTFE
16	Body gasket	Spirial wound
17	Bolt & Nut	A193-B7& A194-7 A193-B8& A194-8
18	Trunnion stem bearing	DU bearing / SS W/ HF
19	Trunnion stem washer	SS W/HF
20	Trunnion Stem	304/316/2205 17-4PH A286
21	Trunnion stem seal	Graphite
22	Trunnion stem bolt	A2-70
23	Body retainer bolt	A2-70
24	Gland bolt	A2-70

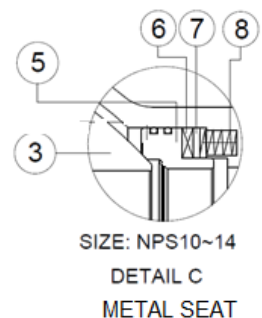
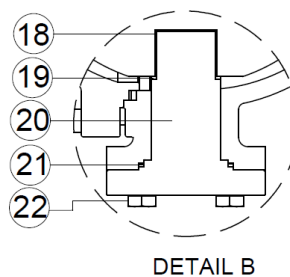
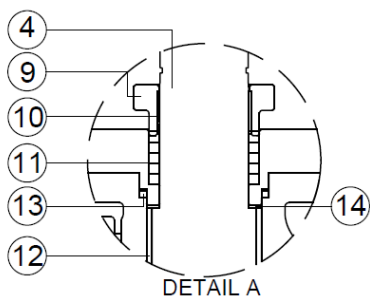
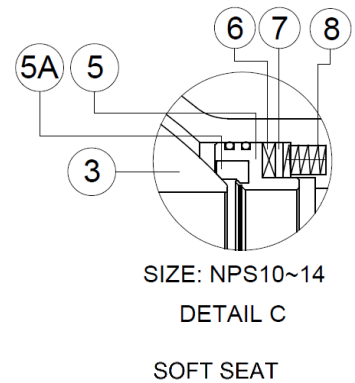
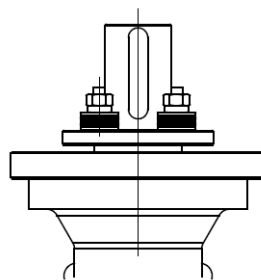
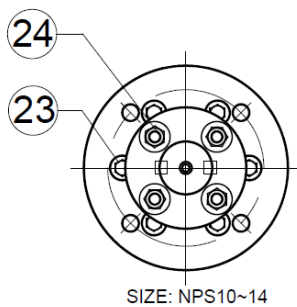


CLASS 150~300 / PN 16~40

10"~ 14" TRUNNION STEM TYPE



ITEM	PART NAME	MATERIAL
1	Body	A216-WCB A351-CFB A351-CF8M.
2	CAP	A216-WCB A351-CFB A351-CF8M.
3	BALL	A351 CF8 / CF8M
4	Stem	304/316/2205 17-4PH A286
5	Seat	304/316/2205...
5A	Seat insert	R-TFE TFM-1600 Devlon Nylon ...
6	Seat gasket	Graphite
7	Seat retainer	AISI 316 S/S
8	Spring	inconel X 750
9	Gland	A351-CF8
10	Gland bearing	SS W/PTFE
11	Stem packing	Graphite
12	Setm bearing	DU bearing / SS W/ HF
13	Stem retainer	304/316/F51...
14	Stem thrust washer	DU bearing / SS W/ HF
15	Stem retainer gasket	Graphite / PTFE
16	Body gasket	Spiral wound
17	Bolt & Nut	A193-B7& A194-7 A193-B8& A194-8
18	Trunnion stem bearing	DU bearing / SS W/ HF
19	Trunnion stem washer	SS W/HF
20	Trunnion Stem	304/316/2205 17-4PH A286
21	Trunnion stem seal	Graphite
22	Trunnion stem bolt	A2-70
23	Body retainer bolt	A2-70
24	Gland bolt	A2-70



Trim selection

SEAT

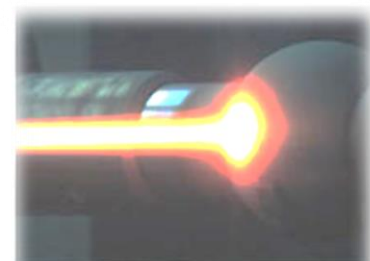
SEAT SEAL				
JDV CODE		MATERIAL / HARDED FACE	TEMP.	NOTES
			°C	
SOFT	R	R-PTFE	-60~180	
	P	PPLRPTFE	-29~250	
	L	NYLON(PA)	-29~100	not good for water
	V	DEVLON	-50~130	not good for water
	M	MOLON(PA66+MOS2)	-50~130	not good for water
	K	PEEK	-59~250	for over 170°C
	O	DELRIN®(POM)	-60~110	
	C	PCTFE	-196~140	for cryogenic

SEAT SEAL				
JDV CODE		MATERIAL / HARDED FACE	TEMP.	NOTES
			°C	
METAL	SM	HARD CHORME	-196~350	
	SH1	Tungsten Carbide	-196~482	
	SH2	Chromium Carbide	-196~871	
	ST	STELLITED	-196~816	

SEAT SEAL

Seat Back Seal-RS

JDV CODE	MATERIAL	TEMP. °C
N	NBR	-29~120
V	VITON A/B	-29~180
U	VITON GLT	-40~200
E	EPDM	-50~120
Y	PTFE+ELGILOY	-196~200
G	GRAPHITE	-240~560



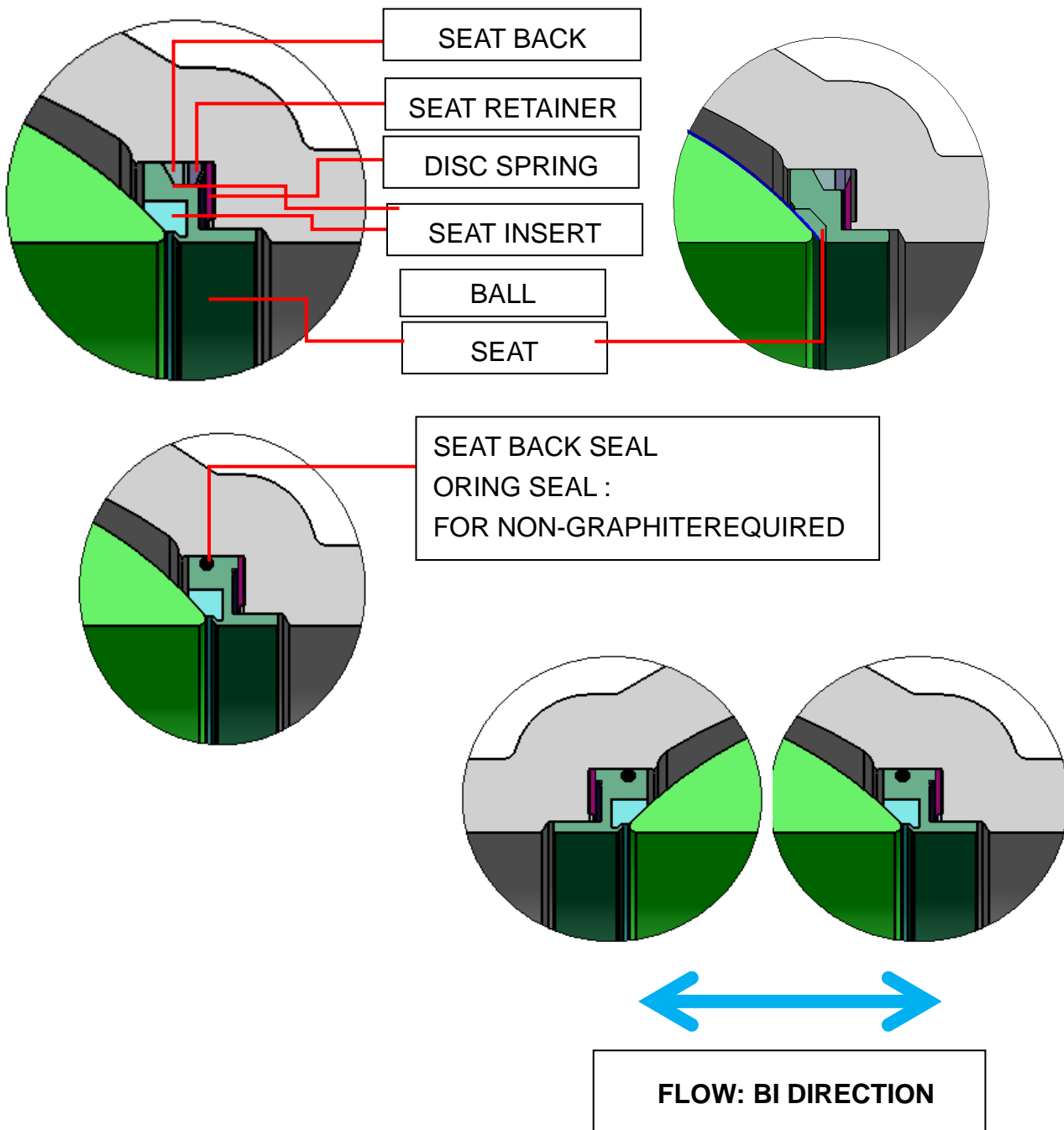
HVOF Thermal Spray

Design & Structure View

JBT-E SEAT DESIGN

SIZE 1-1/2"~8"

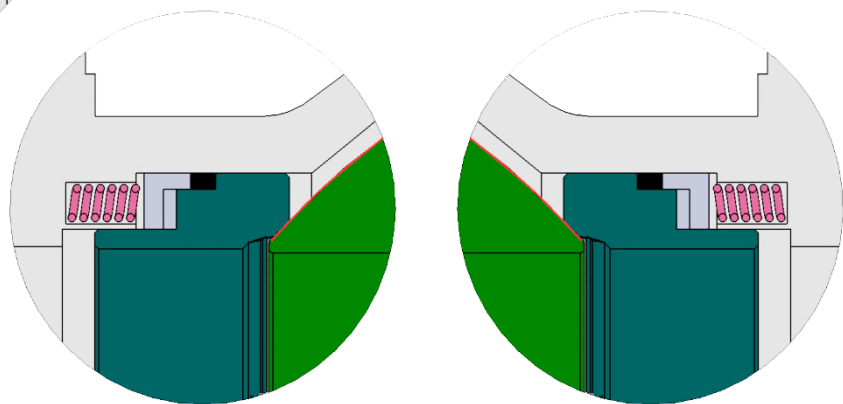
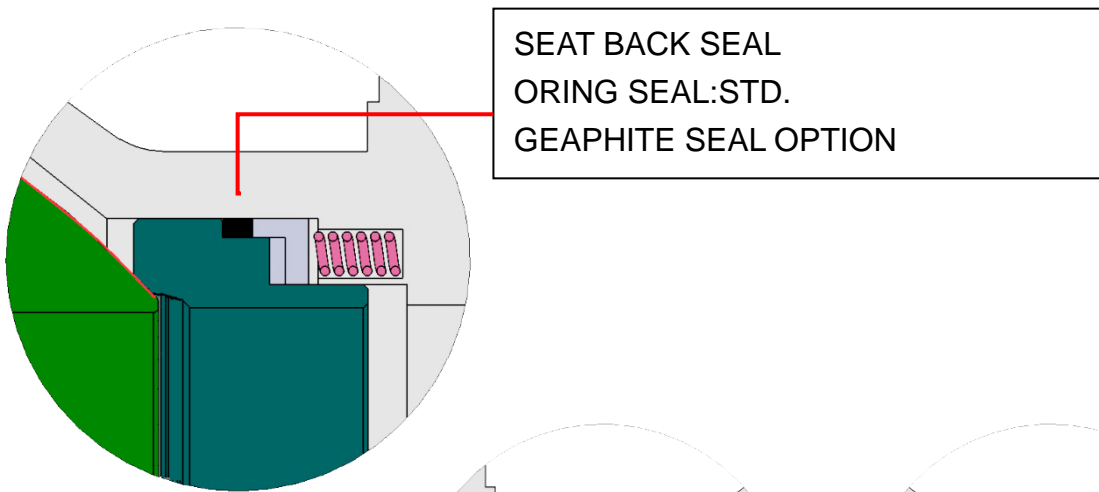
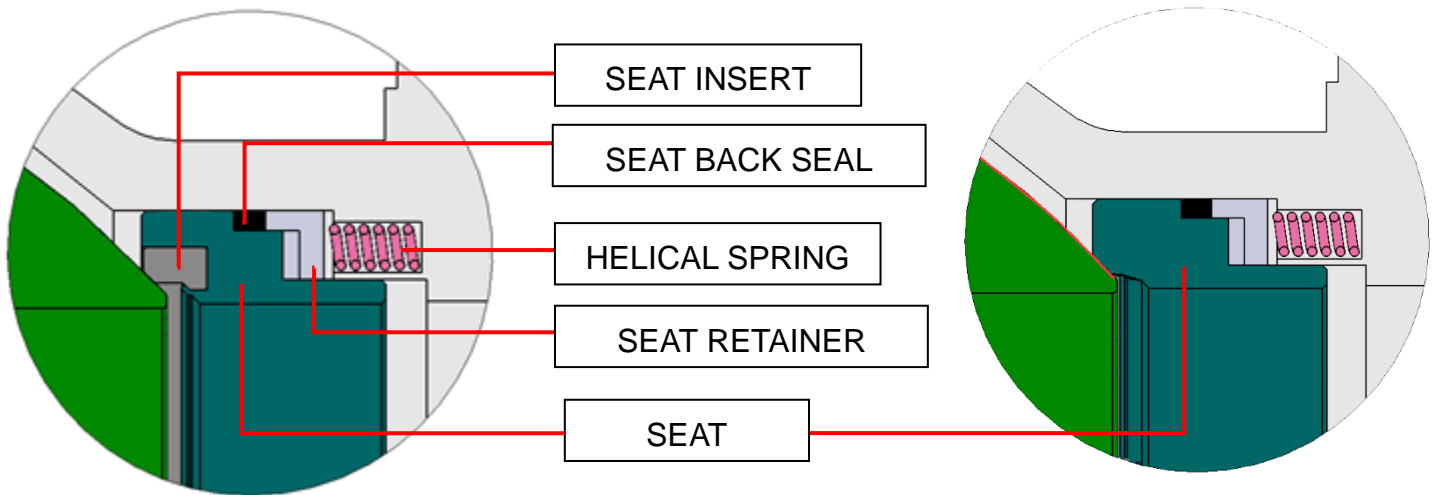
- Disc spring in the design is ensures that the assembly is maintains the seal between ball and seat.
- Reduce the valve seat abrasion to enhance the reliability of sealing.



JBT-E SEAT DESIGN

SIZE 10"~14"

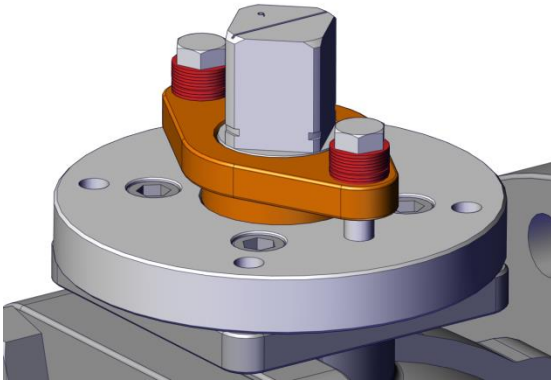
- HELICAL SPRING:



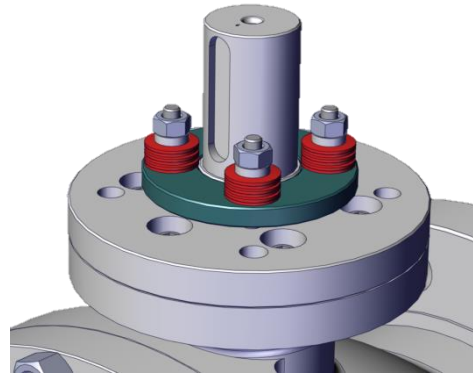
FLOW: BI DIRECTION

Live Loading Design

- Live loading system : To fasten screws to increase the spring force on the packing in the event of leakage.



MODEL SIZE: 1-1/2"~8"

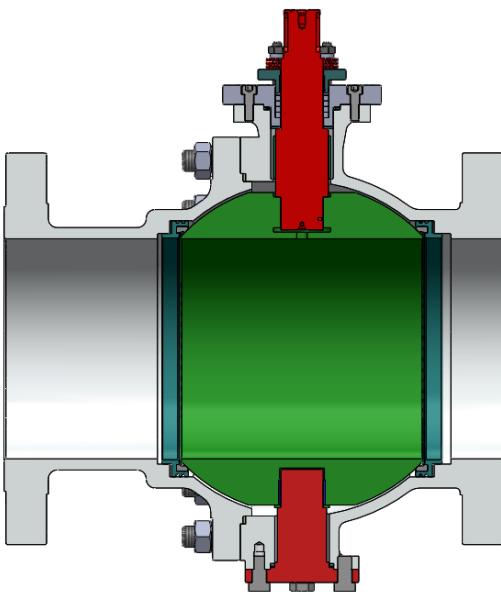


MODEL SIZE: 10"~14"

Fixed Type

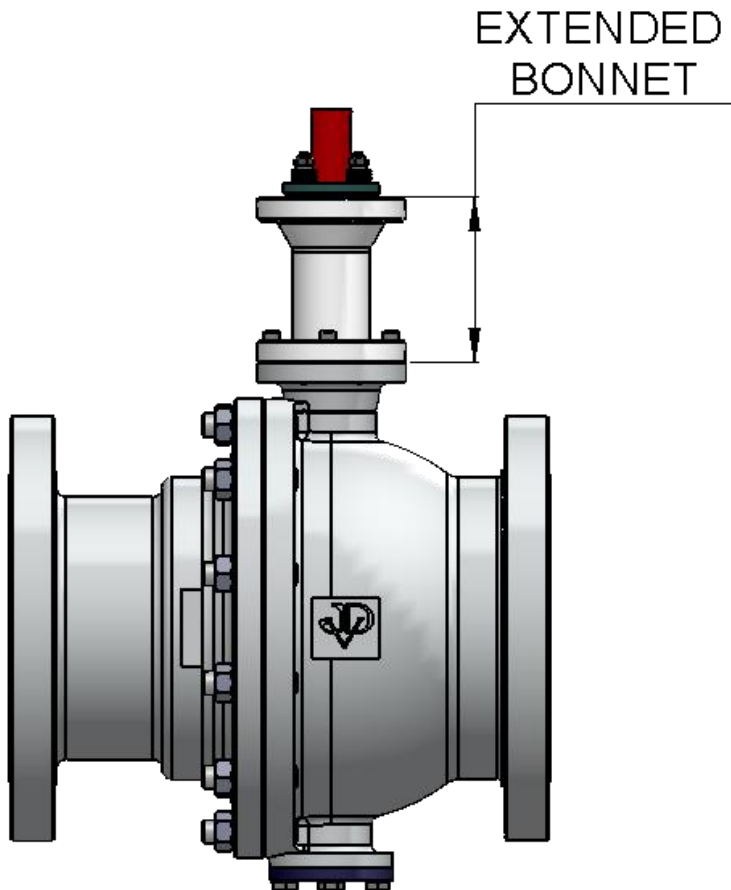
TRUNNION FIXED

1-1/2"~14" CLASS 150~300 / PN16~40



Extension For Hi / Low Temp

1-1/2"~14" CLASS 150~300 / PN16~40



Extended Bonnet Length

HI TEMP: UP TO 550°C

EXTENDED BONNET LENGTH	Extension length for Heat conservation & personnel protect							
	Valve size DN	TEMP. °C						Valve size NPS
		Manual operation & Insulation valve			Control valve w/ mounting bracket & Insulation valve			
		Short			Long			
		MIN.	MAX.	MIN.	MAX.	MIN.	MAX.	
		-29	350	351	550	-29	550	
	L		L1		L			
$32 \leq DN \leq 65$	100		125		100		$1-1/4 \leq NPS \leq 2-1/2$	
$80 \leq DN \leq 125$	100		150		100		$3 \leq NPS \leq 5$	
$150 \leq DN \leq 200$	100		175		100		$6 \leq NPS \leq 8$	
$250 \leq DN \leq 300$	100		200		100		$10 \leq NPS \leq 12$	
$350 \leq DN$	100		250		100		$14 \leq NPS$	

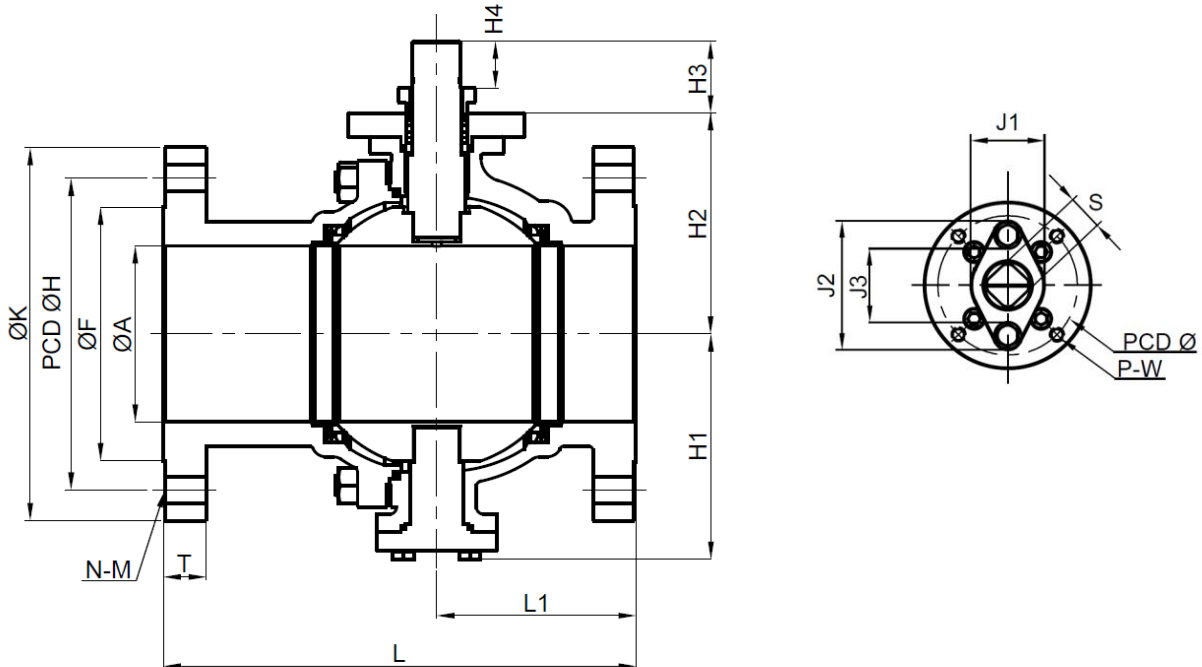
CRYOGENIC / Low Temp : -30~-196 (non-cold box)

EXTENDED BONNET LENGTH	MIN. Vapour column length non-cold box extension							
	Valve size range DN	MIN. Vapour column length						Valve size range NPS
		MIN. design TEMP. °C						
		MIN.	MAX.	MIN.	MAX.	MIN.	MAX.	
		-196	-110	-109	-30			
CY			L1					
$32 \leq DN \leq 65$	250			125			$1-1/4 \leq NPS \leq 2-1/2$	
$80 \leq DN \leq 125$	300			150			$3 \leq NPS \leq 5$	
$150 \leq DN \leq 200$	350			175			$6 \leq NPS \leq 8$	
$250 \leq DN \leq 300$	400			200			$10 \leq NPS \leq 12$	

Note:1.extended length is according to ISO 28921-2013 to ISO28921

Deminsion

1-1/2"~8" CLASS 150~300 / PN16~40



DIMENSIONS CLASS 150

(mm)

SIZE	A	F	H	K	M	N	L	L1	T	S	Q	W	H1	H2	H3	H4	J1	J2	J3
40 1-1/2"	40	73	98.5	127	16	4	165	72	14.3	17	70	M8	73.7	77.3	42	26.5	40	82	42
50 2"	50	92	120.5	152	19	4	178	79	15.9	17	70	M8	80.7	84	42	26.5	40	82	42
65 2-1/2"	65	105	139.5	178	19	4	190	86	17.5	20	70	M8	92.7	105	47	29.5	44	92.6	52.5
80 3"	76	127	152.5	190	19	4	203	98	19.1	20	70	M8	101.7	113.5	47	29.5	44	92.6	52.5
100 4"	100	157	190.5	229	19	8	229	114	23.9	27	102	M10	139.4	137	52	34.5	60	109	61
125 5"	125	186	216.0	254	22	8	356	136.5	23.9	27	102	M10	170	165.5	52	34.5	60	109	66
150 6"	150	216	241.5	279	22	8	394	149	25.4	32	125	M12	192	188.5	62	41	66	116	66
200 8"	201	270	298.5	343	22	8	457	212	28.6	35	140	M16	237.5	238	71	46	74	137	74

DIMENSIONS CLASS 300

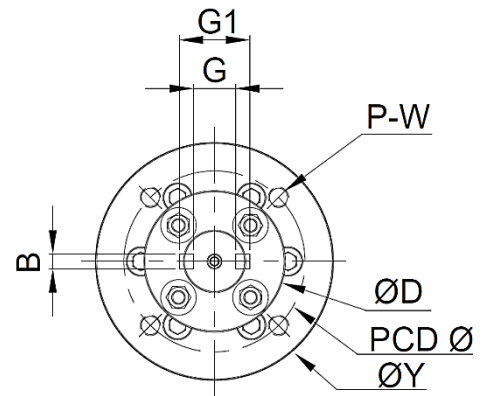
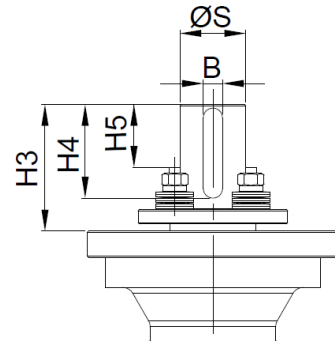
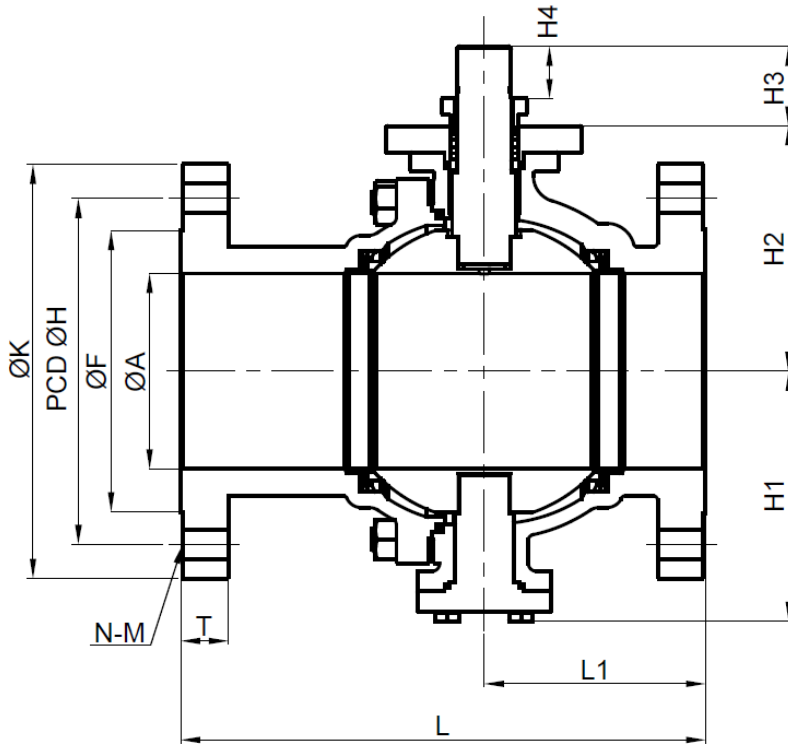
(mm)

SIZE	A	F	H	K	M	N	L	L1	T	S	Q	W	H1	H2	H3	H4	J1	J2	J3
40 1-1/2"	40	73	114.5	156	22	4	190	82	20.6	17	70	M8	73.7	77.3	42	26.5	40	82	42
50 2"	50	92	127.0	165	19	8	216	96.3	22.3	17	70	M8	80.7	84	42	26.5	40	82	42
65 2-1/2"	65	105	149.0	190	22	8	241	99	25.4	20	70	M8	92.7	105	47	29.5	44	92.6	52.5
80 3"	76	127	168.0	210	22	8	282	129	28.6	20	70	M8	101.7	113.5	47	29.5	44	92.6	52.5
100 4"	100	157	200.0	254	22	8	305	135.8	31.8	27	102	M10	139.4	137	52	34.5	60	109	61
125 5"	125	186	235.0	280	22	8	381	171.5	35.1	32	125	M12	170	165.5	62	41	60	116	66
150 6"	150	216	269.7	318	22	12	403	170	36.6	32	125	M12	192	188.5	62	41	66	116	66
200 8"	201	270	330.0	381	25	12	502	226	41.2	35	140	M16	237.5	238	71	46	74	137	74

DIN PN16~PN40 . available on request

Deminsion

10"~14" CLASS 150~300 / PN16~40



DIMENSIONS CLASS 150

(mm)

SIZE	ØA	ØF	ØH	ØK	M	N	L	L1	T	H1	H2	H3	H4	H5	ØS	B	G	G1	Q	W	P	Y	D	
250	10"	252	323.8	362	405	25.4	12	533	240	30.6	270	299.5	85.5	48	36	42	12	32	48	140	M16	4	175	100
300	12"	303	381	431.8	485	25.4	12	610	263.5	32.2	325	357	105.5	78	52	55	16	43	63	165	M20	4	210	125
350	14"	334	412.8	476.3	535	28.5	12	686	309.5	35.4	345	400	137.5	78	56	70	20	55	79	254	M16	8	300	170

DIMENSIONS CLASS 300

(mm)

SIZE	ØA	ØF	ØH	ØK	M	N	L	L1	T	H1	H2	H3	H4	H5	ØS	B	G	G1	Q	W	P	Y	D	
250	10"	252	323.8	387.4	445	28.5	16	568	240	48.1	270	299.5	85.5	48	36	60	12	32	48	140	M16	4	175	100
300	12"	303	381	450.8	520	31.8	16	648	263.5	51.3	325	357	105.5	78	52	70	16	43	63	165	M20	4	210	125
350	14"	334	412.8	514.4	585	31.8	20	762	309.5	54.4	345	400	137.5	78	56	75	20	55	79	254	M16	8	300	170

HOW TO ORDER

EXAMPLES: 1 2 3 4 5 6 7 8 9 10

JBT-E - C1 - 02 - A - R - G - 02 - 050 - FGA - R

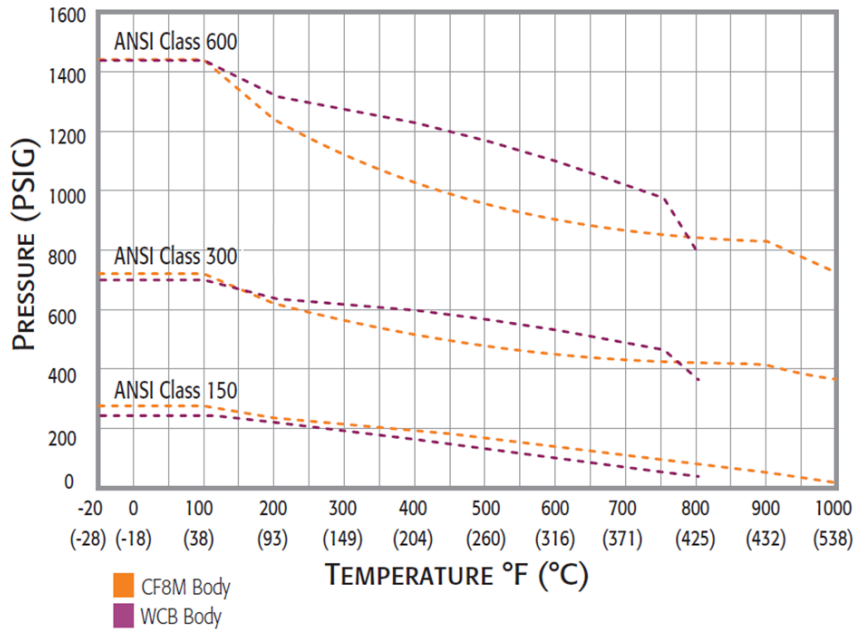
1.TYPE	2.SPEC.		3.BODY.		4.TRIM (BALL/SEAT HOLDER)		5.SEAT (Soft/Metal Coating)		6.SEAL	
JBT-E JBT-EM	C1	150	02	WCB	A	CF8	Soft		G N V E P Y	GRAPHITE NBR VITON EPDM PTFE PTFE+ELGILOY
	C2	300	03	CF8	C	CF8M	R	R-TFE (15%G+PTFE)		
	C3	600	04	CF8M	D	CF3	T	TFM-1600		
	D2	DIN PN16*	05	CF3	E	CF3M	K	PEEK		
	D4	DIN PN40*	06	CF3M	F	CG8M	C	PCTFE		
		*DIN SPEC available on request	07	CG8M	I	CD3MN	Metal Coating			
			11	LCB			SM	BALL:HCR SEAT:STELLITED		
			12	LCC			SH1	BALL:TC SEAT:TC		
			15	CD3MN			SH2	BALL:CRC SEAT:CRC		

7.STEM		8.SIZE		9.OPTION		10.CONNECTION	
02	304	040	1-1/2"	F	FIRE SAFE	R	RF FLANGED
03	316	050	2"	L1	EXTENDED STEM	J	RTJ FLANGED
10	2205	065	2-1/2"	L2	EXTENDED (-30~ -110°C)		*others connection available on request
22	630(17-4PH)	080	3"	I	LIVE LOADING		
36	A286	100	4"	H	LEVER		
		150	6"	G	GEAR		
		200	8"	A	BARE SHAFT		
		250	10"	N	NACE		
		300	12"	ES	EMERGENCY GREASE SEALS		
		350	14"	DB	DOUBLE BLOCK & BLEED		
				DP	DOUBLE PISTON		
		DR	DRAIN				
		CY	CRYOGENIC DESIGN (-50~-196°C)				

Note: Other material available on request.

P/T CHART

Pressure vs. Temperature



*Other material P/T pls ref to ASME B16.34

Seat Temp. application table

SEAT SEAL				
JDV CODE	MATERIAL / HARDED FACE	TEMP.		NOTES
		°C		
METAL	SM	HARD CHORME		-196~350
	SH1	Tungsten Carbide		-196~482
	SH2	Chromium Carbide		-196~871
	ST	STELLITED		-196~816

SEAT				
JDV CODE	MATERIAL	TEMP.		NOTES
		°C		
SOFT	R	R-PTFE		-60~180
	P	PPLRPTFE		-29~250
	L	NYLON(PA)		-29~100 not good for water
	V	DEVLON		-50~130 not good for water
	M	MOLON(PA66+MOS2)		-50~130 not good for water
	K	PEEK		-59~250 for over 170°C
	O	DELRIN®(POM)		-60~110
	C	PCTFE		-196~140 for cryogenic



JDV
CONTROL
VALVES



JBT Series

Trunnion Type **Soft Metal** Seat Ball Valve



*We link all you need
and more than you expect.*



JBT-F JBT-M

Trunnion Type **Soft Metal** Seat Ball Valve

Full Bore Three Piece Flanged Ends

ASME CLASS 150/300/600/900/1500/2500

The JBT & JBTM Series are Trunnion-mounted ball valves designed with vanguard engineering and highly sophisticated technology. Our in-house High Velocity Oxygen Fuel-sprayed hard faces allow them to defy the toughest operating conditions, such as high pressure, abrasive and corrosive mediums, slurries, etc. Successfully used in the Oil & Gas industry, Refineries and Power Plants, these API 6D certificated valves provide an outstanding tightness, stability, safety and reliability that exceed most industry standards.

Product Features

1. True bidirectional design and wide temperature range satisfying all applications.
2. Cavity pressure relief design protecting against any excess of pressure in the body cavity.
3. Trunnion ball design ensuring a tight contact between seats and ball, and allowing the valves to withstand extremely high pressures.
4. Single piston seat rings that guarantees the self-relief of the body cavity in case of overpressure.
5. Double piston design in option, securing both upstream and downstream sealings.
6. Optional double block and bleed design ensuring a safe isolation simultaneously on both upstream and downstream seats.
7. Splined stem strengthening the trim to withstand heavy torques under high pressure drops.
8. Emergency sealant injection design on request to restore the seat or packing integrity immediately.
9. Optional drain plug device to empty the cavity or to detect any leakage.
10. Body gland providing a trustworthy anti-blowout function and an easy maintenance.
11. Several alternatives of soft and metal seats to meet any kind of requirement.
12. Optional purge device guaranteeing a complete cleaning of the body cavity.
13. Fire safe design according to API 607 or API 6FA.
14. Antistatic device.
15. ISO 5211 Mounting Pad design.



API 607/6FA Fire Safe Design



HVOF Thermal Spray

Applicable Standards

- Body Materials :
Standard in WCB, CF8, CF8M
Other materials are available according to requirements.
- Nominal Sizes : 2" to 24" (DN50 to DN600)
- Pressure Ratings : ASME CLASS 150/300/600, 900/1500/2500 on request.
- End Connections : RF / RTJ
- Temperature Range :
Soft Seat : -320~482 °F (-196~250 °C)
Metal seat : -320~932 °F (-196~500 °C), higher temperature on request.
- Face-To-Face Dimensions : ASME B16.10
- Flanged Dimensions : ASME B16.5
- Body Pressure Testing : ASME B16.34 / API 598 / API 6D
- Seat Leakage Testing :
Soft Seat : ASME B16.34 / API 598 / API 6D
Metal Seat : ANSI / FCI 70-2 Class V in standard, Class VI in option.
- Casting : MSS-SP-25 / MSS-SP-55
- Fire Safe Design : Certificated according to API 607 / API 6FA

Industrial Fields:

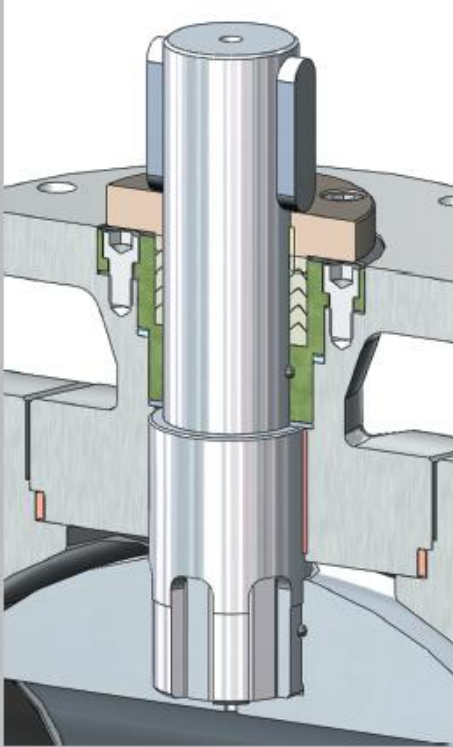
- Oil & Gas
- Refinery / Petrochemical
- Chemical
- Pulp & Paper
- Power Plant
- Steel Mill
- Food
- Mining





Standard Design

Anti-blowout Design

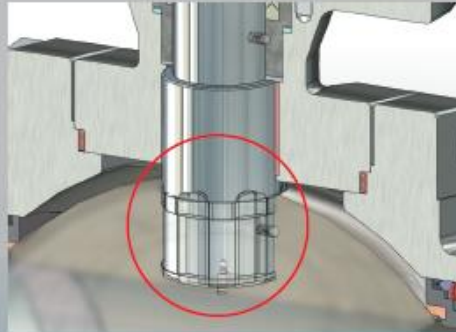


Body Gland prevents the stem from blowing out, and also provides an easy maintenance to the stem packing if necessary.

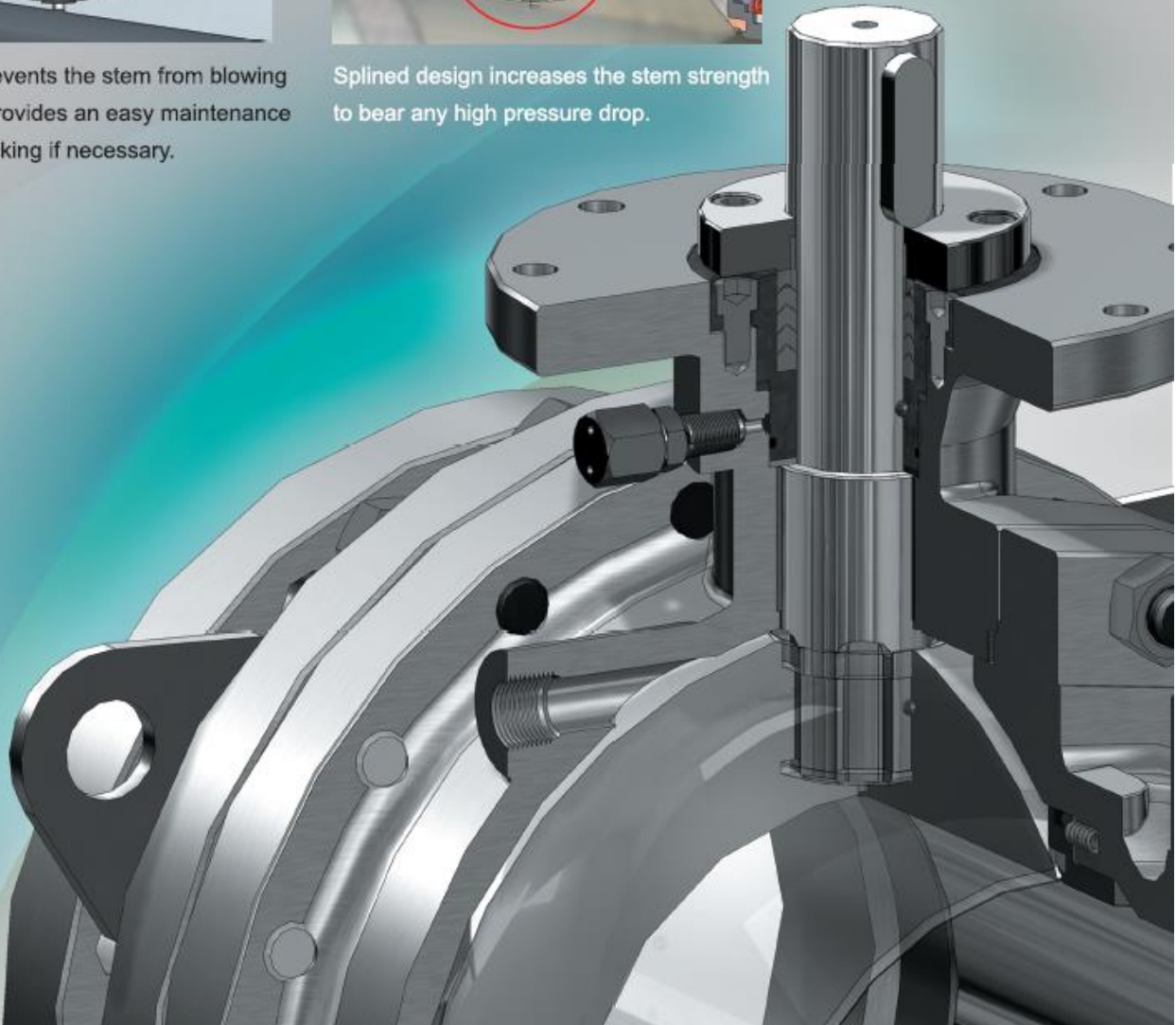
Antistatic Design



Splined Stem Design



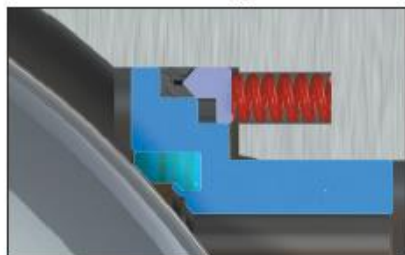
Splined design increases the stem strength to bear any high pressure drop.



Standard Design

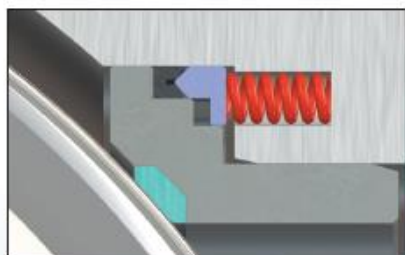
Optional Seats:

Soft Seat Design

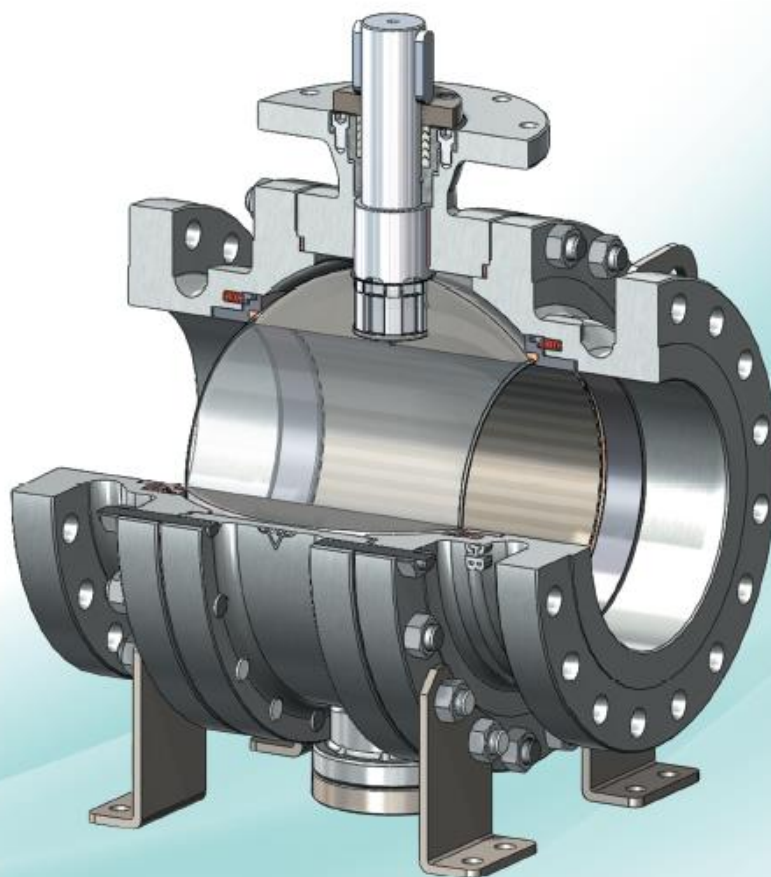


- Bidirectional design.
- Alternative materials available.

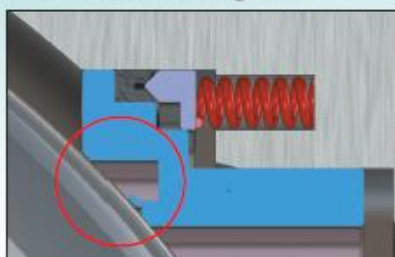
Metal Seat Design



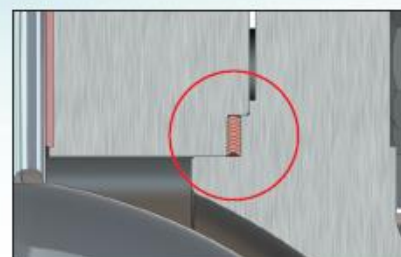
- Bidirectional design.
- Various hard faces in option.



Fire Safe Design

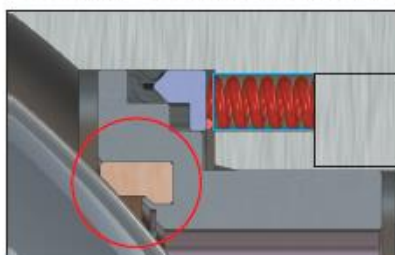


Metal-to-Metal contact after the soft seat is burned.

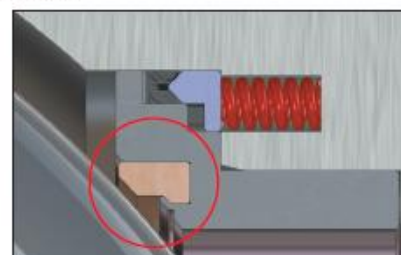


Graphite Body Gasket

Cavity Pressure Relief Design



Before pressure relief



After pressure relief



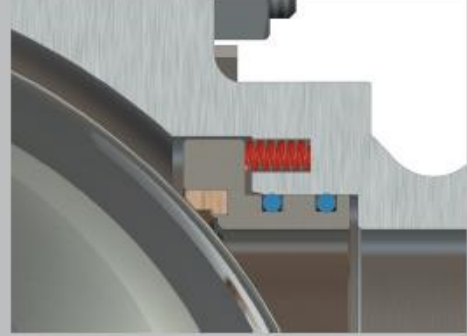
Optional Designs

Purge Design



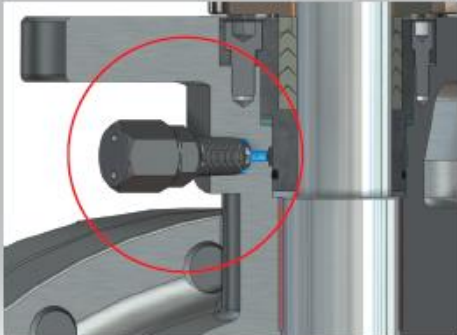
Purge design makes it easy to clean the body cavity.

Double Piston Effect Seat Ring



Double Piston Effect Seat Rings ensure the sealing upstream and downstream when the cavity is overpressured. This is available for working temperature $-4\sim 392\text{ }^{\circ}\text{F}$ ($-20\sim 200\text{ }^{\circ}\text{C}$)

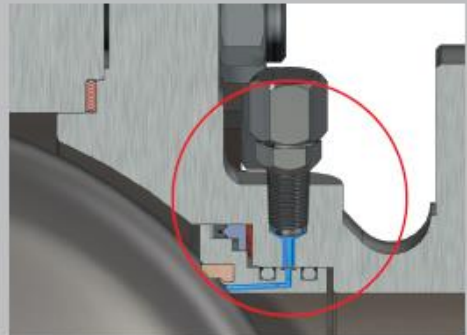
Emergency Sealant Injection



Injection to the Packing

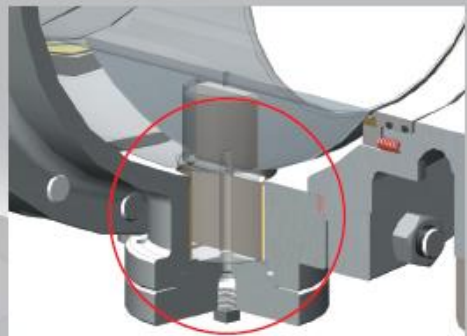
Emergency sealant can be injected to restore the packing and seats.

This is available for working temperature $-4\sim 392\text{ }^{\circ}\text{F}$ ($-20\sim 200\text{ }^{\circ}\text{C}$)



Injection to the seats

Drain Plug Design



Drain plug design allows to vent or detect the leakage.

OUR IN-HOUSE H.V.O.F. COATINGS

Most severe applications are accompanied by high temperature, high abrasion, or high pressure using conditions. In order to make valves withstand these tough services, the balls and seats may need to be strengthened by another material. For this purpose, we built our own HVOF (High Velocity Oxygen Fuel) coating facility, to control the core of technology in the metal seat ball valve. The lower thermal energy preventing the metal deformation, and the higher kinetic energy increasing the strength and adhesion of the bond, offer unique advantages over other hard face methods.

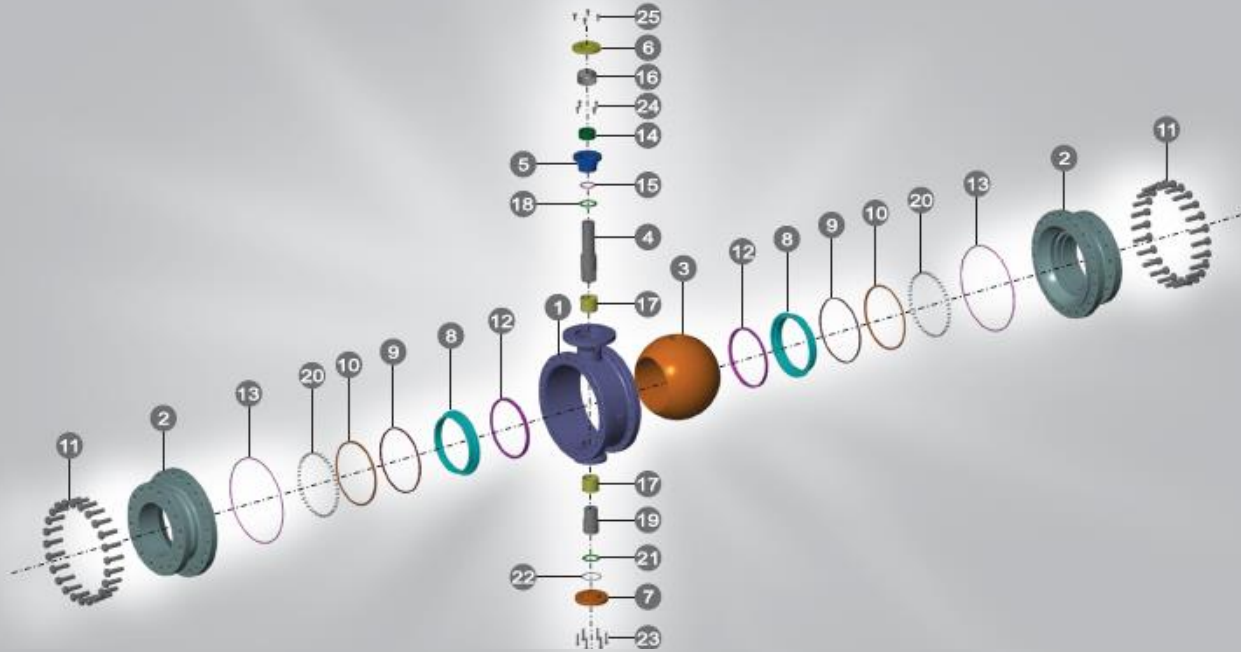


JDV Standard Coatings

Series	Ball Coating	Seat Coating	Max. Temperature	Hardness	Applications
SH1	Tungsten Carbide	Tungsten Carbide	842 °F 450 °C	HCR70	Excellent for high temperature, high wearing, and corrosion resistance.
SH2	Chrome Carbide	Chrome Carbide	932 °F 500 °C	HCR60	Excellent for high temperature cavitation, abrasion and sliding wear. Good for hot gas and corrosion resistance.



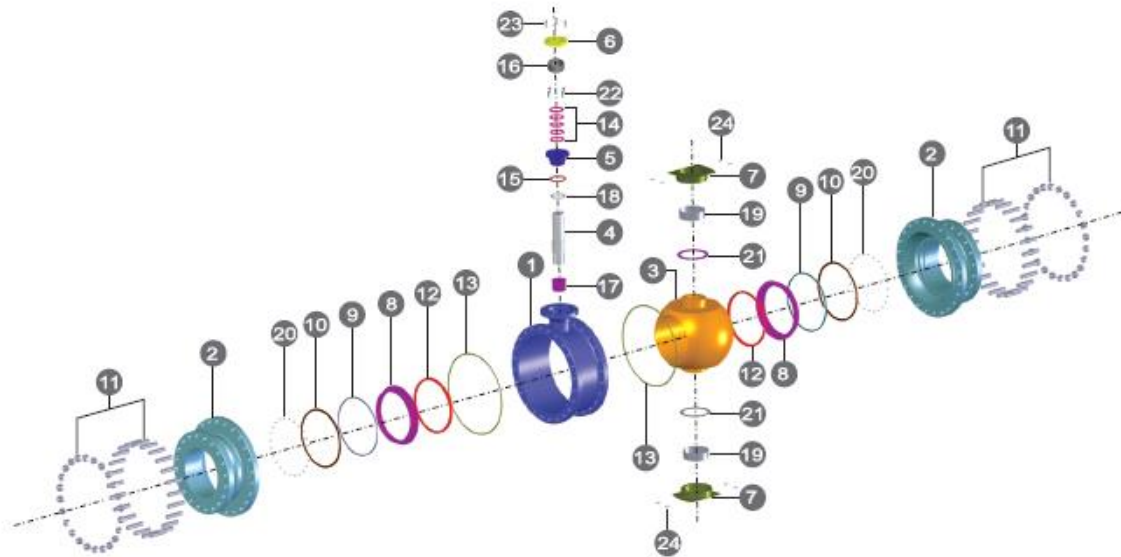
JBT-F 2"~14" (DN50~DN350)



STANDARD MATERIALS

NO	PART NAME	MATERIAL		
1	BODY	A216-WCB	A351-CF8	A351-CF8M
2	CAP	A216-WCB	A351-CF8	A351-CF8M
3	BALL	A351-CF8	A351-CF8	A351-CF8M
4	STEM	A276-304	A276-304	A276-316
5	BODY GLAND	A216-WCB	A351-CF8	A351-CF8M
6	GLAND	A216-WCB	A351-CF8	A351-CF8M
7	BEARING RETAINER	A216-WCB	A351-CF8	A351-CF8M
8	SEAT RING	A351-CF8	A351-CF8	A351-CF8M
9	SEAT RING SEAL	GRAPHITE	GRAPHITE	GRAPHITE
10	SEAT RING RETAINER	A351-CF8	A351-CF8	A351-CF8M
11	BOLT & NUT	A193-B7 & A194-7	A193-B8 & A194-8	A193-B8 & A194-8
12	SEAT	G-PTFE/TFM-1600	G-PTFE/TFM-1600	G-PTFE/TFM-1600
13	BODY GASKET	316SS+GRAPHITE	316SS+GRAPHITE	316SS+GRAPHITE
14	GLAND PACKING	GRAPHITE	GRAPHITE	GRAPHITE
15	GLAND THRUST WASHER	GRAPHITE	GRAPHITE	GRAPHITE
16	GLAND BEARING	G-PTFE	G-PTFE	G-PTFE
17	STEM BEARING	METAL+HARD FACE	METAL+HARD FACE	METAL+HARD FACE
18	STEM THRUST WASHER	G-PTFE	G-PTFE	G-PTFE
19	TRUNNION STEM	A276-304	A276-304	A276-316
20	SPRING	INCONEL® X-750	INCONEL® X-750	INCONEL® X-750
21	TRUNNION STEM WASHER	G-PTFE	G-PTFE	G-PTFE
22	TRUNNION STEM GASKET	GRAPHITE	GRAPHITE	GRAPHITE
23	RETAINER BOLT	STAINLESS STEEL	STAINLESS STEEL	STAINLESS STEEL
24	BODY GLAND BOLT	STAINLESS STEEL	STAINLESS STEEL	STAINLESS STEEL
25	GLAND BOLT	STAINLESS STEEL	STAINLESS STEEL	STAINLESS STEEL

JBT-F 16"~24" (DN400~DN600)



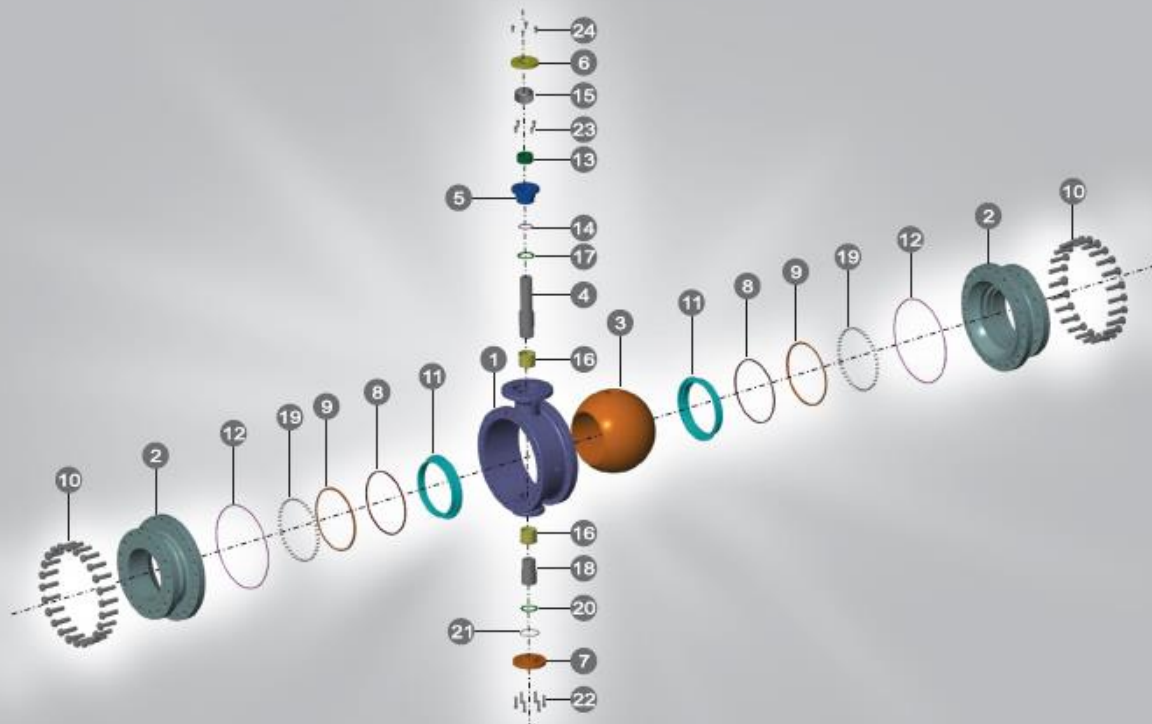
STANDARD MATERIALS

NO	PART NAME	MATERIAL		
1	BODY	A216-WCB	A351-CF8	A351-CF8M
2	CAP	A216-WCB	A351-CF8	A351-CF8M
3	BALL	A351-CF8	A351-CF8	A351-CF8M
4	STEM	A276-304	A276-304	A276-316
5	BODY GLAND	A216-WCB	A351-CF8	A351-CF8M
6	GLAND	A216-WCB	A351-CF8	A351-CF8M
7	TRUNNION	A216-WCB	A351-CF8	A351-CF8M
8	SEAT RING	A351-CF8	A351-CF8	A351-CF8M
9	SEAT RING SEAL	GRAPHITE	GRAPHITE	GRAPHITE
10	SEAT RING RETAINER	A351-CF8	A351-CF8	A351-CF8M
11	BOLT & NUT	A193-B7 & A194-7	A193-B8 & A194-8	A193-B8 & A194-8
12	SEAT	G-PTFE/TFM-1600	G-PTFE/TFM-1600	G-PTFE/TFM-1600
13	BODY GASKET	316SS+GRAPHITE	316SS+GRAPHITE	316SS+GRAPHITE
14	GLAND PACKING	GRAPHITE	GRAPHITE	GRAPHITE
15	GLAND THRUST WASHER	GRAPHITE	GRAPHITE	GRAPHITE
16	GLAND BEARING	G-PTFE	G-PTFE	G-PTFE
17	STEM BEARING	METAL+HARD FACE	METAL+HARD FACE	METAL+HARD FACE
18	STEM THRUST WASHER	METAL+HARD FACE	METAL+HARD FACE	METAL+HARD FACE
19	TRUNNION BEARING	METAL+HARD FACE	METAL+HARD FACE	METAL+HARD FACE
20	SPRING	INCONEL® X-750	INCONEL® X-750	INCONEL® X-750
21	WASHER	METAL+HARD FACE	METAL+HARD FACE	METAL+HARD FACE
22	BODY GLAND BOLT	STAINLESS STEEL	STAINLESS STEEL	STAINLESS STEEL
23	GLAND BOLT	STAINLESS STEEL	STAINLESS STEEL	STAINLESS STEEL
24	PIN	STAINLESS STEEL	STAINLESS STEEL	STAINLESS STEEL

The above materials may be changed with different using conditions.



JBT-M 2"~14" (DN50~DN350)

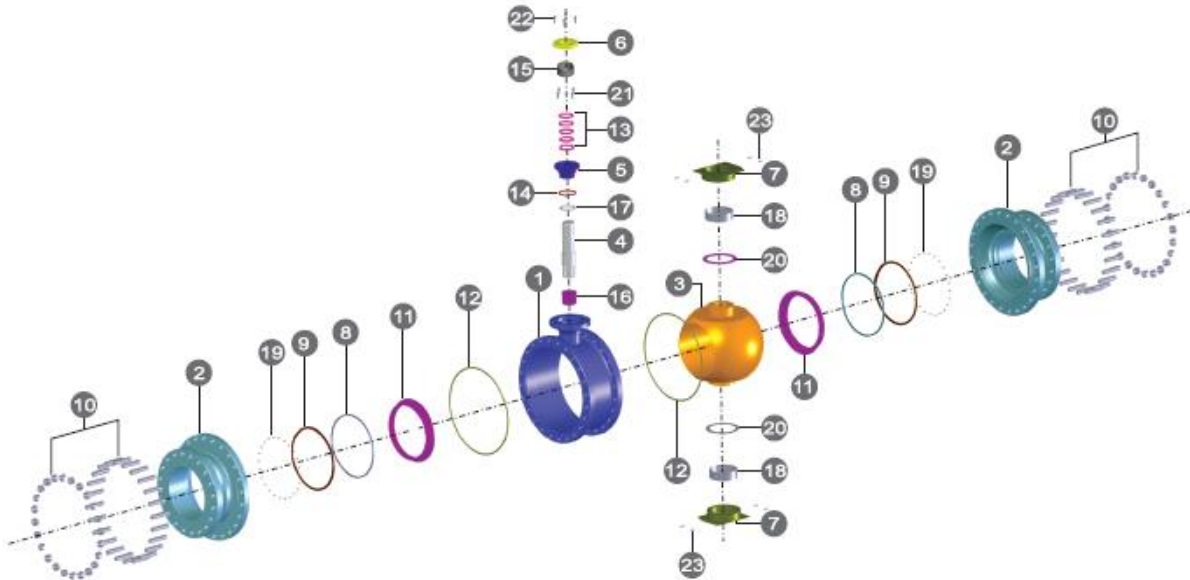


STANDARD MATERIALS

NO	PART NAME	MATERIAL		
1	BODY	A216-WCB	A351-CF8	A351-CF8M
2	CAP	A216-WCB	A351-CF8	A351-CF8M
3	BALL	A351-CF8+HCR ⁽¹⁾ /TC ⁽¹⁾ /CRC ⁽¹⁾	A351-CF8+HCR/TC/CRC	A351-CF8M+HCR/TC/CRC
4	STEM	A564-630 (Hh1150)	A560-630 (HH1150)	A638-S66286
5	BODY GLAND	A216-WCB	A351-CF8	A351-CF8M
6	GLAND	A216-WCB	A351-CF8	A351-CF8M
7	BEARING RETAINER	A216-WCB	A351-CF8	A351-CF8M
8	SEAT RING SEAL	GRAPHITE	GRAPHITE	GRAPHITE
9	SEAT RING RETAINER	A351-CF8	A351-CF8	A351-CF8M
10	BOLT & NUT	A193-B7 & A194-7	A193-B8 & A194-8	A193-B8 & A194-8
11	SEAT	A351-CF8+STELLITE® /TC/CRC	A351-CF8+STELLITE® /TC/CRC	A351-CF8M+STELLITE® /TC/CRC
12	BODY GASKET	316SS+GRAPHITE	316SS+GRAPHITE	316SS+GRAPHITE
13	GLAND PACKING	GRAPHITE	GRAPHITE	GRAPHITE
14	GLAND THRUST WASHER	GRAPHITE	GRAPHITE	GRAPHITE
15	GLAND BEARING	METAL+HARD FACE	METAL+HARD FACE	METAL+HARD FACE
16	STEM BEARING	METAL+HARD FACE	METAL+HARD FACE	METAL+HARD FACE
17	STEM THRUST WASHER	METAL+HARD FACE	METAL+HARD FACE	METAL+HARD FACE
18	TRUNNION BEARING	A564-630 (HH1150)	A564-630 (HH1150)	A638-S66286
19	SPRING	INCONEL® X-750	INCONEL® X-750	INCONEL® X-750
20	TRUNNION STEM WASHER	METAL+HARD FACE	METAL+HARD FACE	METAL+HARD FACE
21	TRUNNION STEM GASKET	GRAPHITE	GRAPHITE	GRAPHITE
22	RETAINER BOLT	STAINLESS STEEL	STAINLESS STEEL	STAINLESS STEEL
23	BODY GLAND BOLT	STAINLESS STEEL	STAINLESS STEEL	STAINLESS STEEL
24	GLAND BOLT	STAINLESS STEEL	STAINLESS STEEL	STAINLESS STEEL

Notes:
 (1) HCr = Hard Chrome TC = Tungsten Carbide CRC = Chrome Carbide

JBT-M 16"~24" (DN400~DN600)



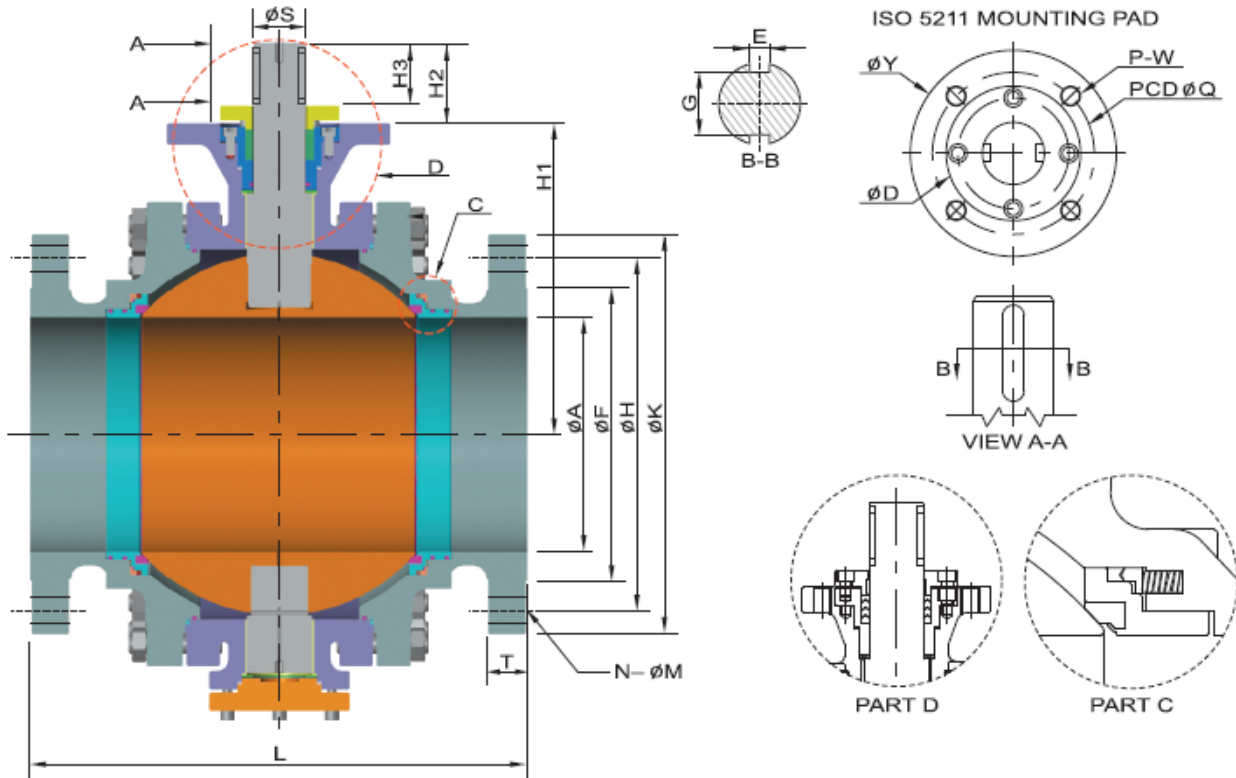
STANDARD MATERIALS

NO	PART NAME	MATERIAL		
1	BODY	A216-WCB	A351-CF8	A351-CF8M
2	CAP	A216-WCB	A351-CF8	A351-CF8M
3	BALL	A351-CF8+HCR/TC/CRC	A351-CF8+HCR/TC/CRC	A351-CF8M+HCR/TC/CRC
4	STEM	A564-630 (HH1150)	A564-630 (HH1150)	A638-S66286
5	BODY GLAND	A216-WCB	A351-CF8	A351-CF8M
6	GLAND	A216-WCB	A351-CF8	A351-CF8M
7	TRUNNION	A216-WCB	A351-CF8	A351-CF8M
8	SEAT RING SEAL	GRAPHITE	GRAPHITE	GRAPHITE
9	SEAT RING RETAINER	A351-CF8	A351-CF8	A351-CF8M
10	BOLT & NUT	A193-B7 & A194-7	A193-B8 & A194-8	A193-B8 & A194-8
11	SEAT	A351-CF8+STELLITE® /TC/CRC	A351-CF8+STELLITE® /TC/CRC	A351-CF8M+STELLITE® /TC/CRC
12	BODY GASKET	316SS+GRAPHITE	316SS+GRAPHITE	316SS+GRAPHITE
13	GLAND PACKING	GRAPHITE	GRAPHITE	GRAPHITE
14	GLAND THRUST WASHER	GRAPHITE	GRAPHITE	GRAPHITE
15	GLAND BEARING	METAL+HARD FACE	METAL+HARD FACE	METAL+HARD FACE
16	STEM BEARING	METAL+HARD FACE	METAL+HARD FACE	METAL+HARD FACE
17	STEM THRUST WASHER	METAL+HARD FACE	METAL+HARD FACE	METAL+HARD FACE
18	TRUNNION BEARING	METAL+HARD FACE	METAL+HARD FACE	METAL+HARD FACE
19	SPRING	INCONEL® X-750	INCONEL® X-750	INCONEL® X-750
20	WASHER	METAL+HARD FACE	METAL+HARD FACE	METAL+HARD FACE
21	BODY GLAND BOLT	STAINLESS STEEL	STAINLESS STEEL	STAINLESS STEEL
22	GLAND BOLT	STAINLESS STEEL	STAINLESS STEEL	STAINLESS STEEL
23	PIN	STAINLESS STEEL	STAINLESS STEEL	STAINLESS STEEL

The above materials may be changed with different using conditions.



JBT-F / JBT-M 2"~14" (DN50~DN350)



DIMENSIONS (ASME CLASS 150)

(mm)

SIZE	A	F	H	K	M	N	L	T	H1	H2	H3	S	E	G	Q	W	P	Y	D	Wt.(Kg)
50 2"	50	92	120.5	152	19	4	178	15.9	116.5	60	40	27	8	17	102	M10	4	130	73	17.3
80 3"	76	127	152.5	190	19	4	203	19.1	155.5	61	40	36.3	10	26.3	102	M10	4	130	85	31
100 4"	100	157	190.5	229	19	8	229	23.9	181	84	60	40	10	30	125	M12	4	153	100	50.7
150 6"	150	216	241.5	279	22	8	394	25.4	235	91	70	48	14	37	165	M20	4	210	125	119
200 8"	201	270	298.5	343	22	8	457	28.6	300	100	75	60	18	46	165	M20	4	210	128	210
250 10"	252	324	362	406	25	12	533	30.2	340	100	75	60	18	46	165	M20	4	210	128	318
300 12"	303	381	432	483	25	12	610	31.8	405	120	95	70	20	54	254	M16	8	290	156	490
350 14"	334	413	476.5	533	29	12	686	35.0	438.5	146	110	75	20	59	254	M16	8	290	170	630

DIMENSIONS (ASME CLASS 300)

(mm)

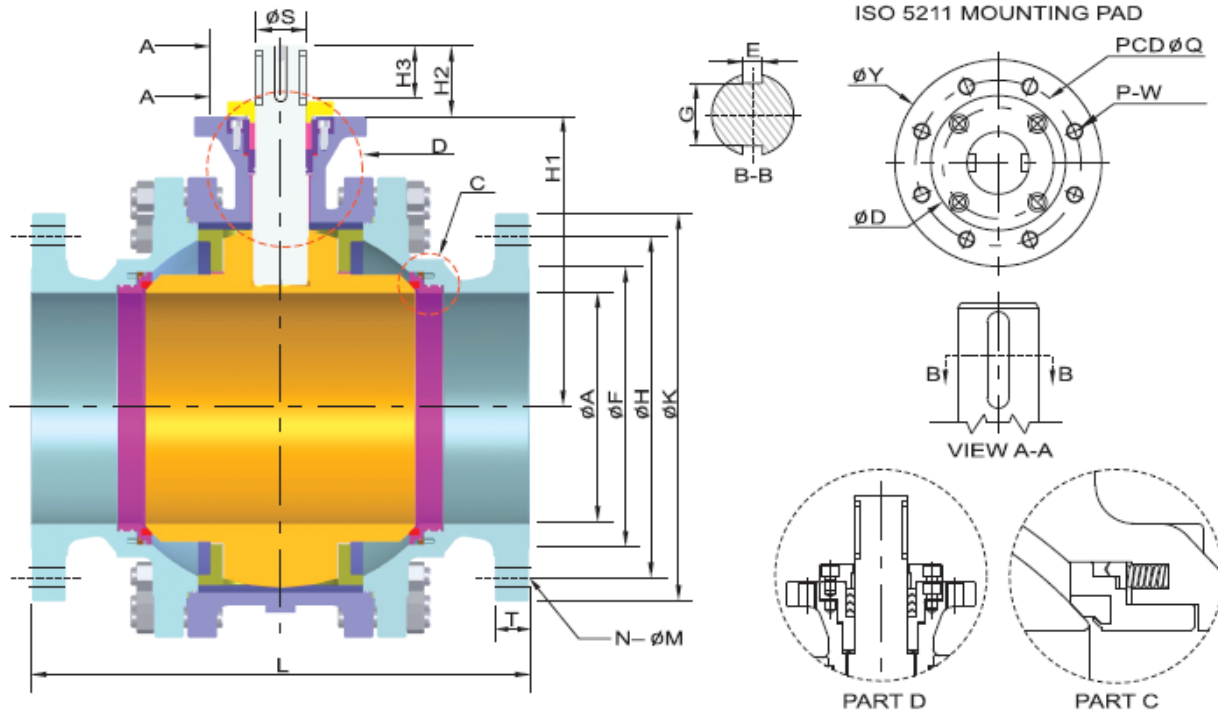
SIZE	A	F	H	K	M	N	L	T	H1	H2	H3	S	E	G	Q	W	P	Y	D	Wt.(Kg)
50 2"	50	92	127	165	19	8	216	22.3	116.5	60	40	27	8	17	102	M10	4	130	73	21.5
80 3"	76	127	168	210	22	8	282	28.6	155.5	61	40	36.3	10	26.3	102	M10	4	130	85	47
100 4"	100	157	200	254	22	8	305	31.8	181	84	60	40	10	30	125	M12	4	153	100	74.8
150 6"	150	216	270	318	22	12	403	36.6	235	91	70	48	14	37	165	M20	4	210	125	150
200 8"	201	270	330	381	25	12	502	41.3	300	100	75	60	18	46	165	M20	4	210	128	268.5
250 10"	252	324	387.5	444	29	16	568	47.7	340	100	75	60	18	46	254	M16	8	290	128	432
300 12"	303	381	451	521	32	16	648	50.8	405	120	95	70	20	54	254	M16	8	290	156	657
350 14"	334	413	514.5	584	32	20	762	54.0	438.5	146	110	75	20	59	254	M16	8	290	170	855

DIMENSIONS (ASME CLASS 600)

(mm)

SIZE	A	F	H	K	M	N	L	T	H1	H2	H3	S	E	G	Q	W	P	Y	D	Wt.(Kg)
50 2"	50	92	127	165	19	8	292	31.8	116.5	60	40	27	8	17	102	M10	4	130	73	28.3
80 3"	76	127	168	210	22	8	356	38.2	155.5	61	40	36.3	10	26.3	102	M10	4	130	85	61.7
100 4"	100	157	216	273	25	8	432	44.5	181	84	60	40	10	30	125	M12	4	153	100	108.7
150 6"	150	216	292	356	29	12	559	54.1	235	91	70	48	14	37	165	M20	4	210	125	219
200 8"	201	270	349	419	32	12	660	62	300	100	75	60	18	46	165	M20	4	210	128	437
250 10"	252	324	432	508	35	16	787	69.9	340	100	75	60	18	46	254	M16	8	290	128	645
300 12"	303	381	489	559	35	20	838	73.1	405	120	95	70	20	54	254	M16	8	290	156	870
350 14"	334	413	527	603	38	20	889	76.2	438.5	146	110	75	20	59	254	M16	8	290	170	1145

JBT-F / JBT-M 16"~24" (DN400~DN600)



DIMENSIONS (ASME CLASS 150)

(mm)

SIZE	A	F	H	K	M	N	L	T	H1	H2	H3	S	E	G	Q	W	P	Y	D	Wt (Kg)
400 16"	387	470	539.8	597	29	16	762	36.6	487	145	108	85	24	65.6	254	M16	8	209	179	885
450 18"	438	533	578	635	32	16	864	39.7	531	170	135	100	28	80	254	M16	8	209	200	1158
500 20"	489	584	635	698	32	20	914	42.7	562	180	145	110	32	84	356	M30	8	415	210	1450
600 24"	589	692	749.5	813	35	20	1067	47.6	650	200	160	120	32	109	356	M30	8	415	230	2030

DIMENSIONS (ASME CLASS 300)

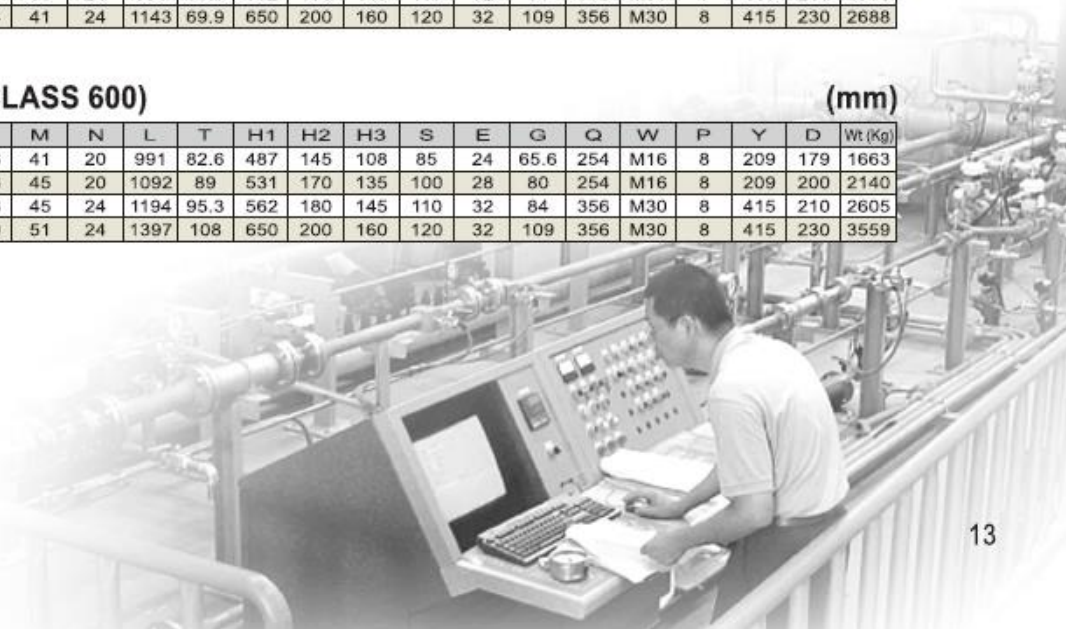
(mm)

SIZE	A	F	H	K	M	N	L	T	H1	H2	H3	S	E	G	Q	W	P	Y	D	Wt (Kg)
400 16"	387	470	571.5	648	35	20	838	57.2	487	145	108	85	24	65.6	254	M16	8	209	179	1200
450 18"	438	533	628.7	711	35	24	914	60.3	531	170	135	100	28	80	254	M16	8	209	200	1574
500 20"	489	584	686	775	35	24	991	63.5	562	180	145	110	32	84	356	M30	8	415	210	1966
600 24"	589	692	813	914	41	24	1143	69.9	650	200	160	120	32	109	356	M30	8	415	230	2688

DIMENSIONS (ASME CLASS 600)

(mm)

SIZE	A	F	H	K	M	N	L	T	H1	H2	H3	S	E	G	Q	W	P	Y	D	Wt (Kg)
400 16"	387	470	603	686	41	20	991	82.6	487	145	108	85	24	65.6	254	M16	8	209	179	1663
450 18"	438	533	654	743	45	20	1092	89	531	170	135	100	28	80	254	M16	8	209	200	2140
500 20"	489	584	724	813	45	24	1194	95.3	562	180	145	110	32	84	356	M30	8	415	210	2605
600 24"	589	692	838	940	51	24	1397	108	650	200	160	120	32	109	356	M30	8	415	230	3559





**JDV
CONTROL
VALVES**



API 6D



ISO 9001



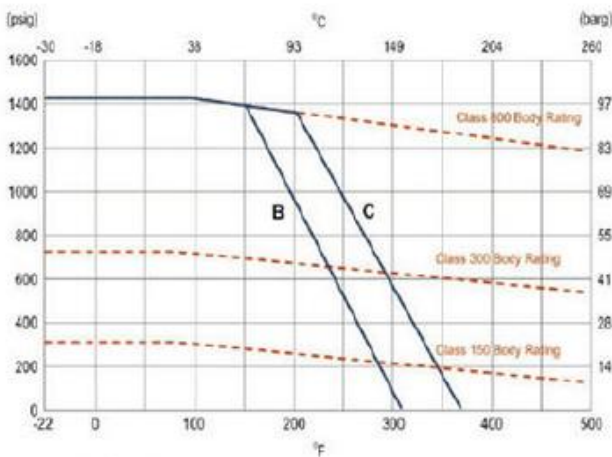
CE

Cv VALUES

Size	2"	3"	4"	6"	8"	10"	12"	14"	16"	18"	20"	24"
Cv	501	1158	2118	5074	9337	14590	21802	29675	38760	51058	63035	90770

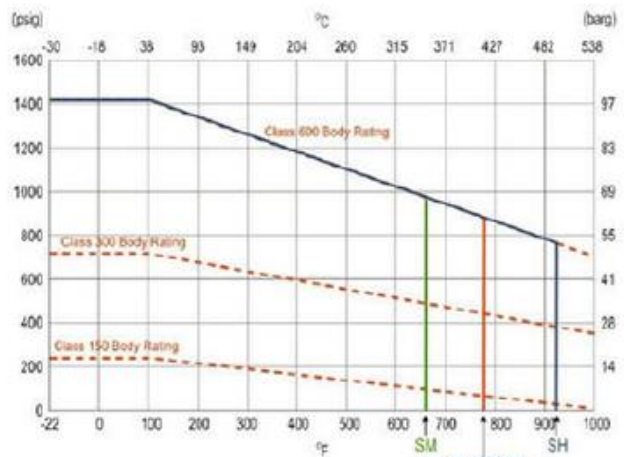
TEMPERATURE & PRESSURE DIAGRAM

JBT-F 2~24 (DN50~DN600)



B= Glass Fiber PTFE
C= Carbon Fiber PTFE

JBT-M 2~24 (DN50~DN600)



SM= Max Temperature 661°F (350°C)
SH= Max Temperature 932°F (500°C)
Carbon Steel Max Temperature 757°F (425°C)

HOW TO ORDER

JBT-F → A → B → C → D → E → F → G → H

Ex: **JBT-F** → C1 → 04 → C → G → 03 → 250 → FGES → RF

A. SPECIFICATION	B. BODY MAT'L	C. BALL	D. SEAT MAT'L	E. STEM MAT'L
C1 ASME CLASS 150	02 WCB	A CF8	G G-PTFE (15% GLASS FIBER+PTFE)	02 304
C2 ASME CLASS 300	03 CF8	C CF8M	C C-PTFE (15% CARBON+PTFE)	03 316
C3 ASME CLASS 600	04 CF8M	D CF3	S S-PTFE (50% 316+PTFE)	05 317
C4 ASME CLASS 900	05 CF3	E CF3M	T TFM-1600®	08 316L
C5 ASME CLASS 1500	06 CF3M	F CG8M	E PEEK	10 S31803
C6 ASME CLASS 2500	07 CG8M	I CD3MN		
	11 LCB			
	12 LCC			
	15 CD3MN			

F. SIZE	G. OPTION	H. END CONNECTION
050 2"	F FIRE SAFE	RF RF FLANGED
080 3"	L EXTENDED STEM	RT RTJ FLANGED
100 4"	I LIVE LOADING	
150 6"	H LEVER	
200 8"	G GEAR	
250 10"	A BARE SHAFT	
300 12"	N NACE	
350 14"	ES EMERGENCY GREASE SEALS	
400 16"	DB DOUBLE BLOCK & BLEED	
450 18"	DP DOUBLE PISTON	
500 20"	DR DRAIN	
600 24"	PG PURGE	
	CY CRYOGENIC DESIGN -40~-320 °F (-40~-196 °C)	

JBT-M → A → B → C → D → E → F → G → H

Ex: **JBT-M** → C1 → 04 → C → 35 → 250 → FGES → RF → SH2

A. SPECIFICATION	B. BODY MAT'L	C. BALL & SEAT MAT'L	D. STEM MAT'L
C1 ASME CLASS 150	02 WCB	A CF8	02 304
C2 ASME CLASS 300	03 CF8	C CF8M	03 316
C3 ASME CLASS 600	04 CF8M	D CF3	05 317
C4 ASME CLASS 900	05 CF3	E CF3M	08 316L
C5 ASME CLASS 1500	06 CF3M	F CG8M	10 S31803
C6 ASME CLASS 2500	07 CG8M	I CD3MN	22 630
	11 LCB		35 S66286
	12 LCC		
	15 CD3MN		

E. SIZE	F. OPTION	G. END CONNECTION	H. TEMPERATURE
050 2"	F FIRE SAFE	RF RF FLANGED	SH -20-661 °F (-29-350 °C)
080 3"	L EXTENDED STEM	RT RTJ FLANGED	BALL W/HCR SEAT W/STELLITE®
100 4"	I LIVE LOADING		SH1 -20-842 °F (-29-450 °C)
150 6"	H LEVER		BALL W/TC SEAT W/TC
200 8"	G GEAR		SH2 -20-932 °F (-29-500 °C)
250 10"	A BARE SHAFT		BALL W/CRC SEAT W/CRC
300 12"	N NACE		
350 14"	ES EMERGENCY GREASE SEALS		
400 16"	DB DOUBLE BLOCK & BLEED		
450 18"	DP DOUBLE PISTON		
500 20"	DR DRAIN		
600 24"	PG PURGE		
	CY CRYOGENIC DESIGN -40~-320 °F (-40~-196 °C)		



JDV
CONTROL
VALVES



JBT Series

Trunnion Type **Soft Metal** Seat Ball Valve



*We link all you need
and more than you expect.*



**JDV
CONTROL
VALVES**

JBT-A / JBT-AM / JBT-AF / JBT-TM / JBT-L / JBT-LM

Trunnion Type **Soft Metal** Seat Ball Valve

JDV is a leading manufacturer of valve, valve automation and measurement systems to the oil and gas industry. Our products are primarily used to control, direct and measure the flow of oil and gas as it is moved from individual wellheads through flowlines, gathering lines and transmission systems to refineries, petrochemical plants and industrial centers for processing.

Features and Benefits

Size: 2"~56" (50 mm to 1400 mm).
ASME/ANSI Class: 150~2500(PN20 to PN420)
API 2000 to 5000 psi

Forged Steel Body
Trunnion Mounted Ball
Anti-Static Device
Blow-out Proof Stem
Fire Safe Design
For Underground Use (On Request)

Applicable Standards

Design	ASME B16.34/API 6D
Face to Face	ASME B16.10/API 6D
End Flange	ASME B16.5/B16.47A
BW End	ASME B16.25
Test	API 6D / API 598
Fire Safe	API 607/6FA
Special	NACE MR-01-75



Industrial Fields:

- Oil & GAS
- Petrochemical
- Chemical
- LNG
- Crude Oil
- Refined Products Transmission Lines

Production

Trunnion-Mounted Ball Valves

Features

Size Range/ ASME Class	150#	300#	600#	900#	1500#	2500#
1.5"						
2"						
3"						
4"						
6"						
8"						
10"						
12"						
14"						
16"						
18"						
20"						
24"						
28"						
32"						
36"						
40"						
42"						
46"						
48"						
56"						

Floating Ball Valves

Features

Size Range/ ASME Class	150#	300#	600#	900#	1500#	2500#
1/2"						
1"						
2"						
3"						
4"						
6"						
8"						
10"						
12"						



JBT-A/JBT-AM/JBT-AF/JBT-TM Trunnion Side Entry

JDV Valves Split Body Side Entry Ball Valves are manufactured in a wide range of diameters and pressure classes.

In the standard versions the valves are specified for transmission pipelines, pumping, compression and re-injection units, offshore platforms, onshore terminals, pig traps, measuring stations and surge relief skids.

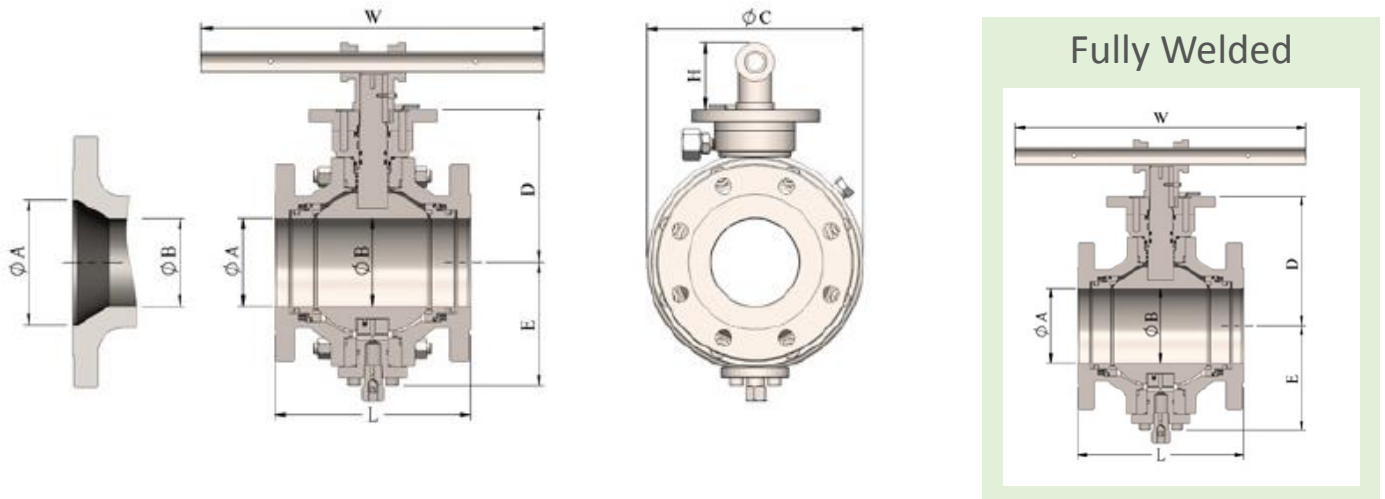
In the special versions the valves are used for cryogenic service in LNG plants.

Split body construction allows the use of forged materials in various grades of carbon steel, stainless steel and high alloys thus complying with the most severe service conditions.

SIZE		ASME CLASS						
In.	mm	150	300	400	600	900	1500	2500
1 1/2	40	▲	▲	▲	▲	▲	▲	▲
2	50	▲	▲	▲	▲	▲	▲	▲
3	80	▲	▲	▲	▲	▲	▲	▲
4	100	▲	▲	▲	▲	▲	▲	▲
6	150	●	●	●	●	●	●	▲
8	200	●	●	●	●	●	●	▲
10	250	●	●	●	●	●	●	●
12	300	●	●	●	●	●	●	●
14	350	●	●	●	●	●	●	●
16	400	●	●	●	●	●	●	●
18	450	●	●	●	●	●	●	●
20	500	●	●	●	●	●	●	●
22	550	●	●	●	●	●	●	●
24	600	●	●	●	●	●	●	●
26	650	●	●	●	●	●	●	●
28	700	●	●	●	●	●	●	●
30	750	●	●	●	●	●	●	●
32	800	●	●	●	●	●	●	●
34	850	●	●	●	●	●	●	●
36	900	●	●	●	●	●	●	●
40	1000	●	●	●	●	●	●	●
42	1050	●	●	●	●	●	●	●
46	1150	●	●	●	●	●	●	●
48	1200	●	●	●	●	●	●	●
56	1400	●	●	●	●	●	●	●

B1 ▲ E1 ● For class 400LB valves are also available against specific request.
B1: POST TRUNNION DESIGN; E1: PLATE TRUNNION DESIGN

150~300 Post Trunnion Ball Valve



ASME CLASS 150

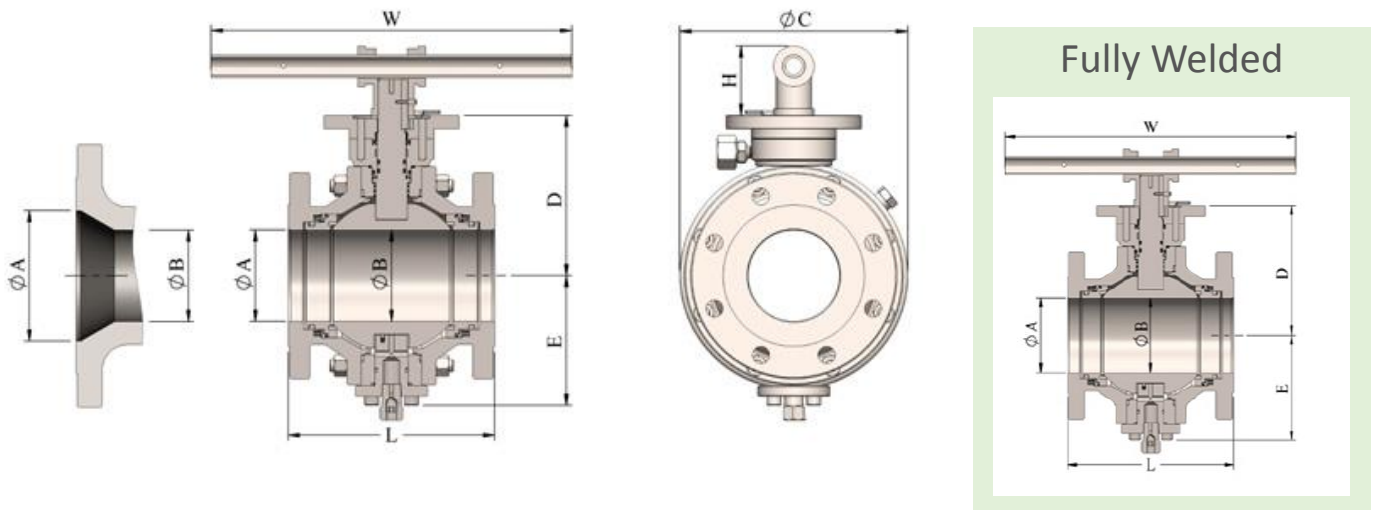
SIZE in/mm	A	B	L-WE	L-RF	L-RTJ	C	D	E	H	W	V	X	Y	Weight lb/kg
1 1/2	1.50	1.50	7.50	6.50	7	5.98	4.72	3.54	1.57	13.0	/	/	/	31
40	38	38	191	165	178	152	120	90	40	300	/	/	/	14
2x11/2x2	1.93	1.50	8.50	7	7.50	5.98	4.72	3.54	1.57	13.0	/	/	/	44
50x40x50	49	38	216	178	191	152	120	90	40	300	/	/	/	20
2	1.93	1.93	8.50	7	7.50	6.30	5.0	3.86	1.57	14.0	/	/	/	51
50	49	49	216	178	191	160	127	98	40	356	/	/	/	23
3x2x3	2.91	1.93	11.13	8	8.50	8.43	5.0	3.86	1.57	14.0	/	/	/	66
80x50x80	74	49	283	203	216	214	127	98	40	356	/	/	/	30
3	2.91	2.91	11.13	8	8.50	8.43	6.22	4.88	1.57	16.0	/	/	/	95
80	74	74	283	203	216	214	158	124	40	406	/	/	/	43
4x3x4	3.94	2.91	12	9.02	9.50	10.0	6.22	4.88	1.57	16.0	/	/	/	123
100x80x100	100	74	305	229	241	254	158	124	40	406	/	/	/	56
4	3.94	3.94	12	9.02	9.50	10.0	7.0	5.67	1.57	18.1	/	/	/	161
100	100	100	305	229	241	254	178	144	40	560	/	/	/	73
6x4x6	5.91	3.94	18	15.50	16.00	10.94	7.0	5.67	1.57	18.1	/	/	/	170
150x100x150	150	100	457	394	406	279	178	144	40	560	/	/	/	77

Note: (*) Upon Request. For dimensions & weights in larger sizes consult the factory.
Dimensions C, D, E, H, V, X, Y and weights are subject to change without notice.



**JDV
CONTROL
VALVES**

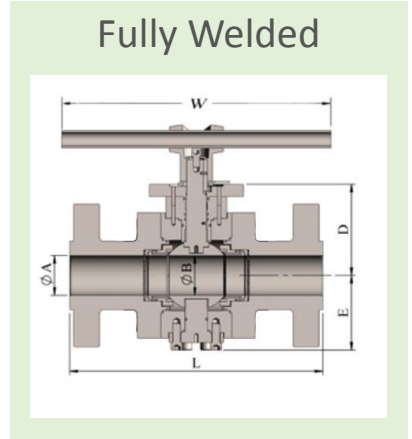
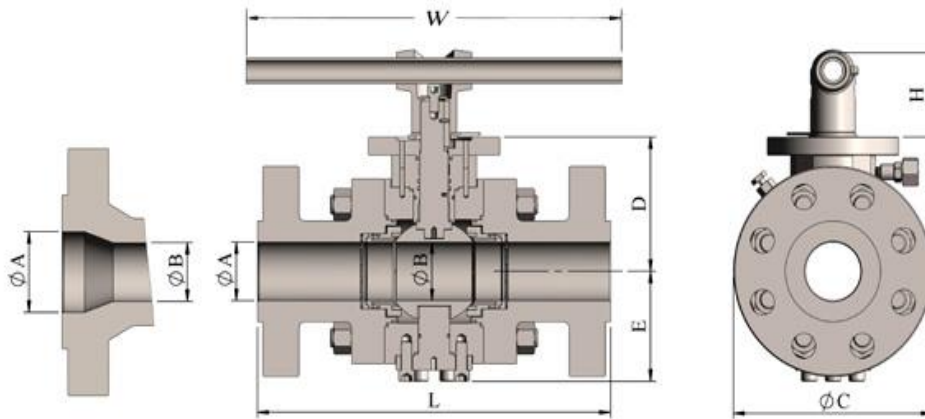
150~300 Post Trunnion Ball Valve



ASME CLASS 300

SIZE in/mm	A	B	L-WE	L-RF	L-RTJ	C	D	E	H	W	V	X	Y	Weight lb/kg
1 1/2	1.50	1.50	7.50	7.50	8	6.30	4.72	3.54	1.57	15	/	/	/	40
40	38	38	191	191	203	160	120	90	40	382	/	/	/	18
2x1 1/2x2	1.93	1.50	8.50	8.50	9.13	6.50	4.72	3.54	1.57	15	/	/	/	55
50x40x50	49	38	216	216	232	165	120	90	40	382	/	/	/	25
2	1.93	1.93	8.50	8.50	9.13	6.50	5.0	3.86	1.57	17	/	/	/	59
50	49	49	216	216	232	165	127	98	40	432	/	/	/	27
3x2x3	2.91	1.93	11.13	11.13	11.75	7.52	5.0	3.86	1.57	17	/	/	/	75
80x50x80	74	49	283	283	298	191	127	98	40	432	/	/	/	34
3	2.91	2.91	11.13	11.13	11.75	8.66	6.22	4.88	1.57	22.2	/	/	/	119
80	74	74	283	283	298	220	158	124	40	560	/	/	/	54
4x3x4	3.94	2.91	12	12	12.63	9.02	6.22	4.88	1.57	22.2	/	/	/	132
100x80x100	100	74	305	305	321	229	158	124	40	560	/	/	/	60
4	3.94	3.94	12	12	12.63	10.0	7.0	5.67	1.57	24	/	/	/	196
100	100	100	305	305	321	254	178	144	40	700	/	/	/	89
6x4x6	5.91	3.94	18	15.88	16.5	12.52	7.0	5.67	1.57	24	/	/	/	223
150x100x150	150	100	457	403	419	318	178	144	40	700	/	/	/	101

600# Post Trunnion (B1) Ball Valve



ASME CLASS 600

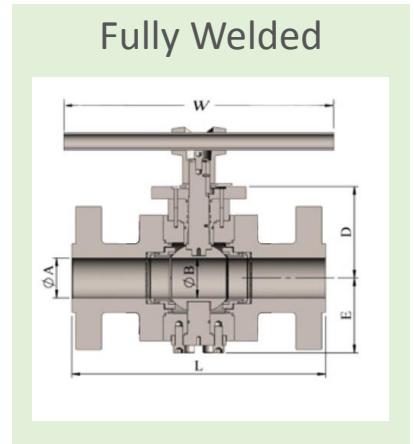
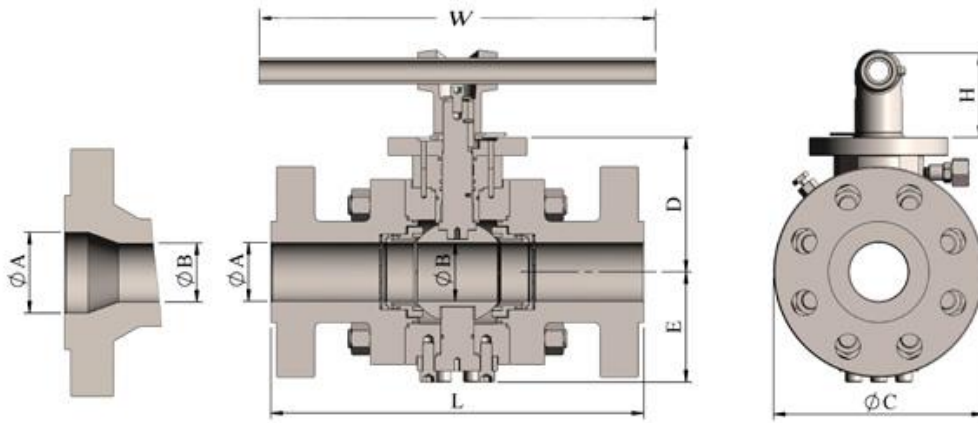
SIZE in/mm	A	B	L-WE	L-RF	L-RTJ	C	D	E	H	W	V	X	Y	Weight lb/kg
1 1/2	1.50	1.50	9.50	9.50	9.50	6.50	5.79	4.33	1.57	19.0	/	/	/	46
40	38	38	241	241	241	165	147	110	40	482	/	/	/	21
2x11/2x2	1.93	1.50	11.5	11.5	11.63	6.69	5.79	4.33	1.57	19.0	/	/	/	55
50x40x50	49	38	292	292	295	170	147	110	40	482	/	/	/	25
2	1.93	1.93	11.5	11.5	11.63	6.69	5.91	4.33	1.57	23.0	/	/	/	62
50	49	49	292	292	295	170	150	110	40	584	/	/	/	28
3x2x3	2.91	1.93	14.0	14.0	14.13	8.66	5.91	4.33	1.57	23.0	/	/	/	86
80x50x80	74	49	356	356	359	220	150	110	40	584	/	/	/	39
3	2.91	2.91	14.0	14.0	14.13	8.66	6.81	5.20	2.17	28.0	/	/	/	130
80	74	74	356	356	359	220	173	132	55	712	/	/	/	59
4x3x4	3.94	2.91	17	17	17.13	10.39	6.81	5.20	2.17	28.0	/	/	/	168
100x80x100	100	74	432	432	435	264	173	132	55	712	/	/	/	76
4	3.94	3.94	17	17	17.13	10.39	7.72	6.30	2.17	34.0	16.0	2.17	10.0	249
100	100	100	432	432	435	264	196	160	55	864	406	55	254	113
6x4x6	5.91	3.94	22.0	22.0	22.13	14.0	7.72	6.30	2.17	34.0	16.0	2.17	10.0	335
150x100x150	150	100	559	559	562	356	196	160	55	864	406	55	254	152

Note: (*) Upon Request. For dimensions & weights in larger sizes consult the factory.
Dimensions C, D, E, H, V, X, Y and weights are subject to change without notice.



**JDV
CONTROL
VALVES**

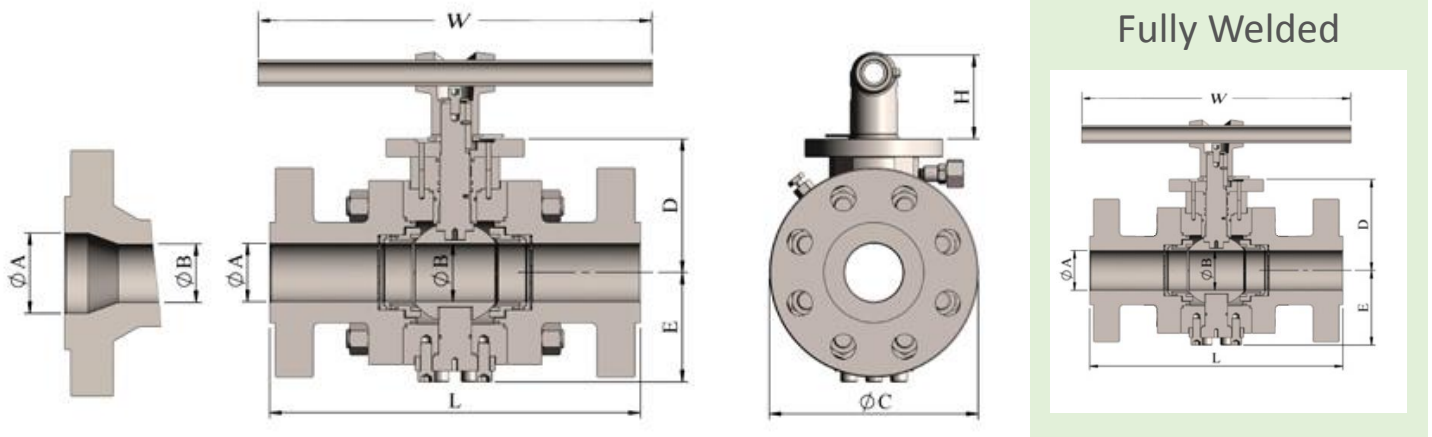
900# Post Trunnion (B1) Ball Valve



ASME CLASS 900

SIZE in/mm	A	B	L-WE	L-RF	L-RTJ	C	D	E	H	W	V	X	Y	Weight lb/kg
1 1/2 40	1.50 38	1.50 38	12.0 305	12.0 305	12.0 305	6.50 165	5.79 147	4.33 110	1.57 40	24.0 610	/	/	/	68 31
2x11/2x2 50x40x50	1.93 49	1.50 38	14.49 368	14.49 368	14.61 371	8.50 216	5.79 147	4.33 110	1.57 40	24.0 610	/	/	/	95 43
2 50	1.93 49	1.93 49	14.49 368	14.49 368	14.61 371	8.50 216	6.06 154	4.41 112	1.57 40	29.0 736	/	/	/	130 59
3x2x3 80x50x80	2.91 74	1.93 49	15.0 381	15.0 381	15.12 384	9.49 241	6.06 154	4.41 112	1.57 40	29.0 736	/	/	/	143 65
3 80	2.91 74	2.91 74	15.0 381	15.0 381	15.12 384	9.49 241	7.17 182	5.59 142	2.17 55	30.0 762	/	/	/	187 85
4x3x4 100x80x100	3.94 100	2.91 74	18.0 457	18.0 457	18.11 460	11.5 292	7.17 182	5.59 142	2.17 55	30.0 762	/	/	/	240 109
4 100	3.94 100	3.94 100	18.0 457	18.0 457	18.11 460	11.5 292	8.07 205	6.69 170	2.17 55	36.0 914	16.0	2.17	10.0	390 177
6x4x6 150x100x150	5.91 150	3.94 100	24.02 610	24.02 610	24.13 613	15.0 381	8.07 205	6.69 170	2.17 55	36.0 914	16.0	2.17	10.0	489 222

1500~2500# Post Trunnion (B1) Ball Valve



ASME CLASS 1500

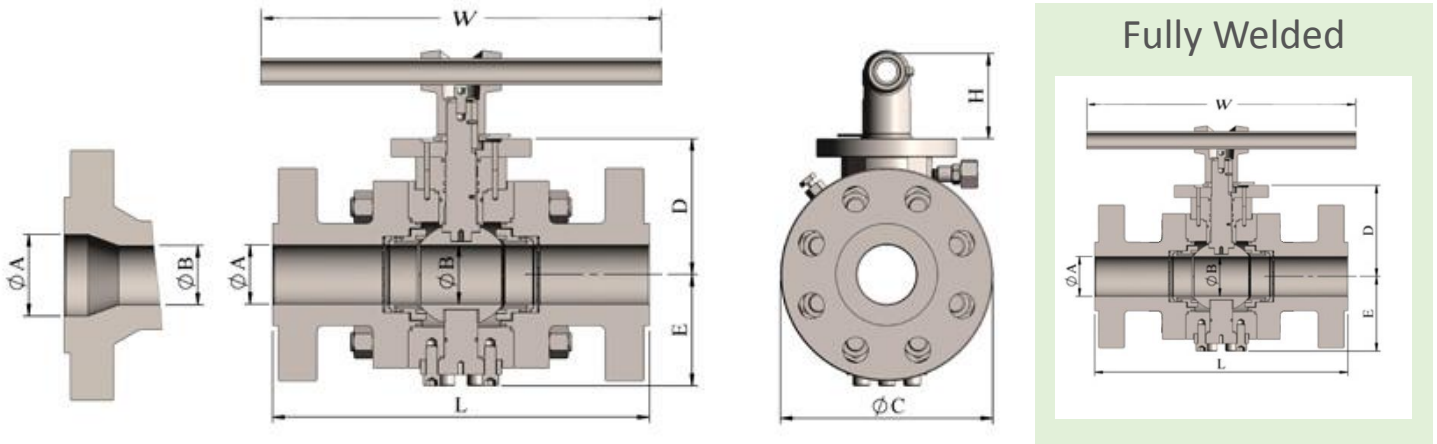
SIZE in/mm	A	B	L-WE	L-RF	L-RTJ	C	D	E	H	W	V	X	Y	Weight lb/kg
1 1/2 40	1.50 38	1.50 38	12.0 305	12.0 305	12.0 305	6.50 165	5.79 147	4.33 110	1.57 40	24 710	/	/	/	68 31
2x1 1/2x2 50x40x50	1.93 49	1.50 38	14.49 368	14.49 368	14.61 371	8.50 216	5.79 147	4.33 110	1.57 40	24 710	/	/	/	95 43
2 50	1.93 49	1.93 49	14.49 368	14.49 368	14.61 371	8.50 216	6.06 154	4.41 112	1.57 40	29.0 736	/	/	/	130 59
3x2x3 80x50x80	2.91 74	1.93 49	18.5 470	18.5 470	18.62 473	10.43 265	6.06 154	4.41 112	1.57 40	29.0 736	/	/	/	168 76
3 80	2.91 74	2.91 74	18.5 470	18.5 470	18.62 473	10.43 265	7.87 200	6.38 162	2.17 55	37.0 946	/	/	/	240 109
4x3x4 100x80x100	3.94 100	2.91 74	21.5 546	21.5 546	21.61 549	12.24 311	7.87 200	6.38 162	2.17 55	37.0 946	/	/	/	311 141
4 100	3.94 100	3.94 100	21.5 546	21.5 546	21.61 549	12.24 311	8.50 216	7.48 190	2.17 55	43.0 1092	16.0 406	2.17 55	10.0 254	399 181
6x4x6 150x100x150	5.67 144	3.94 100	27.76 705	27.76 705	27.99 711	15.55 395	8.50 216	7.48 190	2.17 55	43.0 1092	16.0 406	2.17 55	10.0 254	628 285

Note: (*) Upon Request. For dimensions & weights in larger sizes consult the factory.
Dimensions C, D, E, H, V, X, Y and weights are subject to change without notice.



**JDV
CONTROL
VALVES**

1500~2500# Post Trunnion (B1) Ball Valve



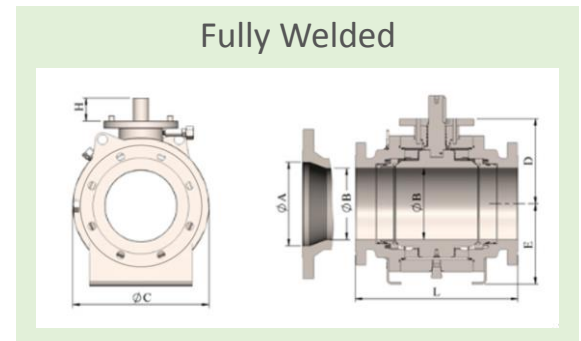
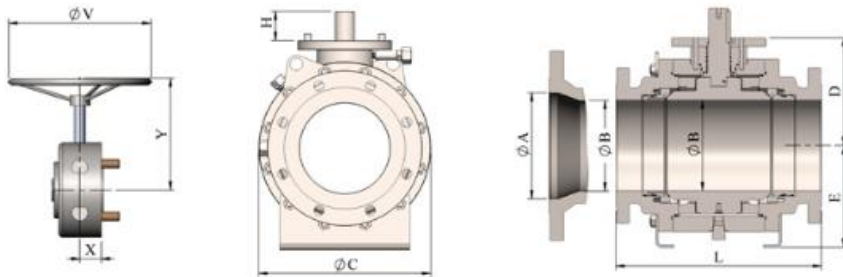
ASME CLASS 2500

SIZE in/mm	A	B	L-WE	L-RF	L-RTJ	C	D	E	H	W	V	X	Y	Weight lb/kg
1 1/2 40	1.50 38	1.50 38	14.49 368	14.49 368	14.61 371	8.07 205	6.26 159	4.72 120	1.57 40	29.0 736	/	/		130 59
2x11/2x2 50x40x50	1.65 42	1.50 38	17.76 451	17.76 451	17.87 451	9.25 235	6.26 159	4.72 120	1.57 40	29.0 736	/	/		143 65
2 50	1.65 42	1.65 42	17.76 451	17.76 451	17.87 451	9.25 235	6.54 166	5.12 130	2.17 55	35.5 902	16.0 406	/	/	194 88
3x2x3 80x50x80	2.44 62	1.65 42	22.76 578	22.76 578	22.99 584	12.01 305	6.54 166	5.12 130	2.17 55	35.5 902	16.0 406	/	/	341 155
3 80	2.44 62	2.44 62	22.76 578	22.76 578	22.99 584	12.01 305	8.39 213	7.01 178	2.36 60	45.5 1156	16.0 406	/	/	411 187
4x3x4 100x80x100	3.43 87	2.44 62	26.5 673	26.5 673	26.89 683	16.34 415	8.39 213	7.01 178	2.36 60	45.5 1156	16.0 406	/	/	581 264
4 100	3.43 87	3.43 87	26.5 673	26.5 673	26.89 683	16.34 415	11.10 282	10.08 256	3.15 80	n/a	20.0 508	3.15 80	12.0 305	836 380
6x4x6 150x100x150	5.16 131	3.43 87	35.98 914	35.98 914	36.5 927	19.09 485	11.10 282	10.08 256	3.15 80	n/a	20.0 508	3.15 80	12.0 305	1122 510

150 Plate Trunnion Ball Valve

ASME CLASS 150 E1 Series

SIZE in/mm	A	B	L-WE	L-RF	L-RTJ	C	D	E	H	W	V	X	Y	Weight lb/kg
6	5.91	5.91	18	15.50	16.00	12.44	8.27	8.58	2.36	31.0	16.0	2.36	8.75	391
150	150	150	457	394	406	316	210	218	60	788	406	60	292	177
8	7.91	7.91	20.5	18	18.5	15.08	9.45	10.08	2.56	36.0	16.0	2.56	8.75	560
200	201	201	521	457	470	383	240	256	65	914	406	65	292	254
10	9.92	9.92	22	21	21.5	18.90	11.57	11.65	3.15	n/a	20.0	3.15	8.75	927
250	252	252	559	533	546	480	294	296	80	n/a	508	80	292	420
12	11.93	11.93	25	24	24.5	22.44	13.78	14.37	3.54	n/a	24.0	3.54	16.5	1450
300	303	303	635	610	622	570	350	365	90	n/a	610	90	419	658
14	13.15	13.15	30	27	27.5	24.61	14.88	15.43	3.94	n/a	24.0	3.94	16.5	1800
350	334	334	762	686	699	625	378	392	100	n/a	610	100	419	816
16	15.16	15.16	33	30	30.5	27.95	16.73	17.13	4.72	n/a	28.0	4.72	16.5	2570
400	385	385	838	762	775	710	425	435	120	n/a	711	120	419	1166
18	17.17	17.17	36	34	34.5	30.12	17.91	18.31	4.72	n/a	28.0	4.72	16.5	3020
450	436	436	914	864	876	765	455	465	120	n/a	711	120	419	1370
20	19.17	19.17	39	36	36.5	32.87	19.88	23.11	4.72	n/a	28.0	4.72	22.0	4050
500	487	487	991	914	927	835	505	587	120	n/a	711	120	559	1837
22	21.18	21.18	(*)	(*)	(*)	36.26	21.14	24.80	4.72	n/a	28.0	4.72	22.0	5020
550	538	538	(*)	(*)	(*)	921	537	630	120	n/a	711	120	559	2277
24	23.19	23.19	45	42	42.5	38.90	22.52	26.38	7.09	n/a	28.0	7.09	22.0	6818
600	589	589	1143	1067	1080	988	572	670	180	n/a	711	180	559	3099
26	24.92	24.92	49	45	(*)	41.73	24.49	28.27	7.09	n/a	28.0	7.09	22.0	8107
650	633	633	1245	1143	(*)	1060	622	718	180	n/a	711	180	559	3685
28	26.93	26.93	53	49	(*)	44.76	25.87	29.65	7.09	n/a	30.0	7.09	23.5	9878
700	684	684	1346	1245	(*)	1137	657	753	180	n/a	762	180	597	4490



ASME CLASS 150 E1 Series

SIZE in/mm	A	B	L-WE	L-RF	L-RTJ	C	D	E	H	W	V	X	Y	Weight lb/kg
30	28.94	28.94	55	51	(*)	49.02	27.52	31.73	8.07	n/a	30.0	8.07	23.5	11473
750	735	735	1397	1295	(*)	1245	699	806	205	n/a	762	205	597	5215
32	30.67	30.67	60	54	(*)	50.98	29.02	33.27	8.07	n/a	30.0	8.07	23.5	14960
800	779	779	1524	1372	(*)	1295	737	845	205	n/a	762	205	597	6800
34	32.68	32.68	64	58	(*)	53.39	30.87	34.37	8.07	n/a	30.0	8.07	23.5	17160
850	830	830	1626	1473	(*)	1356	784	873	205	n/a	762	205	597	7800
36	34.41	34.41	68	60	(*)	56.73	32.36	35.75	8.07	n/a	30.0	8.07	23.5	19360
900	874	874	1727	1524	(*)	1441	822	908	205	n/a	762	205	597	8800
40	38.43	38.43	(*)	(*)	(*)	63.90	35.63	39.37	8.07	n/a	32.0	8.07	23.5	27632
1000	976	976	(*)	(*)	(*)	1623	905	1000	205	n/a	812	205	597	12560
42	40.16	40.16	(*)	(*)	(*)	69.72	38.11	40.75	8.07	n/a	32.0	8.07	23.5	31416
1050	1020	1020	(*)	(*)	(*)	1771	968	1035	205	n/a	812	205	597	14280
48	45.91	45.91	(*)	(*)	(*)	77.52	44.37	46.38	8.07	n/a	32.0	8.07	25.0	48180
1200	1166	1166	(*)	(*)	(*)	1969	1127	1178	205	n/a	812	205	635	21900
54	51.65	51.65	(*)	(*)	(*)	84.61	46.73	47.87	9.65	n/a	32.0	9.65	25.0	68565
1350	1312	1312	(*)	(*)	(*)	2149	1187	1216	245	n/a	812	245	635	31060
56	57.40	57.40	(*)	(*)	(*)	89.76	50.39	52.01	9.65	n/a	32.0	9.65	25.0	75275
1400	1458	1458	(*)	(*)	(*)	2280	1280	1321	245	n/a	812	245	635	34100

Note: (*) Upon Request. For dimensions & weights in larger sizes consult the factory. Dimensions C, D, E, H, V, X, Y and weights are subject to change without notice.

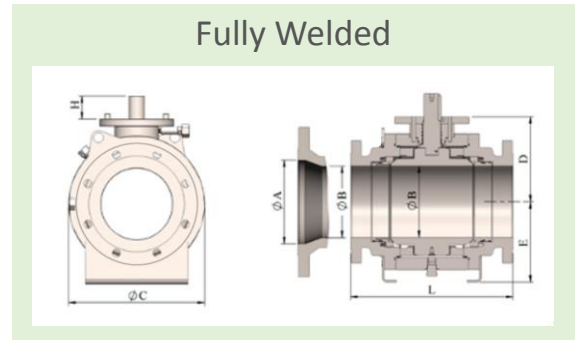
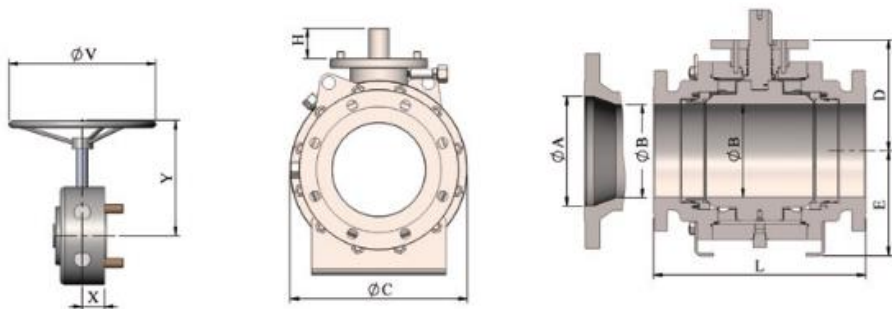


**JDV
CONTROL
VALVES**

300 Plate Trunnion Ball Valve

ASME CLASS 300 E1 Series

SIZE in/mm	A	B	L-WE	L-RF	L-RTJ	C	D	E	H	W	V	X	Y	Weight lb/kg
6	5.91	5.91	18	15.9	16.5	12.44	8.27	8.58	2.36	31.8	16.0	2.36	8.75	408
150	150	150	457	403	419	316	210	218	60	806	406	60	292	185
8	7.91	7.91	20.5	19.8	20.4	15.08	9.45	10.08	2.56	39.6	16.0	2.56	8.75	622
200	201	201	521	502	518	383	240	256	65	1004	406	65	292	282
10	9.92	9.92	22	22.4	23	18.90	11.57	11.65	3.15	n/a	20.0	3.15	8.75	1100
250	252	252	559	568	584	480	294	296	80	n/a	508	80	292	500
12	11.93	11.93	25	25.5	26.1	22.44	13.78	14.37	3.54	n/a	24.0	3.54	16.5	1613
300	303	303	635	648	664	570	350	365	90	n/a	610	90	419	733
14	13.15	13.15	30	30	30.6	24.61	14.88	15.43	3.94	n/a	24.0	3.94	16.5	2264
350	334	334	762	762	778	625	378	392	100	n/a	610	100	419	1029
16	15.16	15.16	33	33	33.6	27.95	16.73	17.13	4.72	n/a	28.0	4.72	16.5	3120
400	385	385	838	838	854	710	425	435	120	n/a	711	120	419	1418
18	17.17	17.17	36	36	36.6	30.12	17.91	18.31	4.72	n/a	28.0	4.72	16.5	3502
450	436	436	914	914	930	765	455	465	120	n/a	711	120	419	1592
20	19.17	19.17	39	39	39.8	33.27	19.88	23.11	4.72	n/a	28.0	4.72	22.0	4829
500	487	487	991	991	1010	845	505	587	120	n/a	711	120	559	2195
22	21.18	21.18	43	43	43.9	36.61	21.14	24.80	4.72	n/a	28.0	4.72	22.0	6134
550	538	538	1092	1092	1114	930	537	630	120	n/a	711	120	559	2788
24	23.19	23.19	45	45	45.9	39.25	22.52	26.38	7.09	n/a	28.0	7.09	22.0	7612
600	589	589	1143	1143	1165	997	572	670	180	n/a	711	180	559	3460
26	24.92	24.92	49	49	50	42.13	24.49	28.27	7.09	n/a	28.0	7.09	22.0	10252
650	633	633	1245	1245	1270	1070	622	718	180	n/a	711	180	559	4660
28	26.93	26.93	53	53	54	45.24	25.87	29.65	7.09	n/a	30.0	7.09	23.5	12694
700	684	684	1346	1346	1372	1149	657	753	180	n/a	762	180	597	5770



ASME CLASS 300 E1 Series

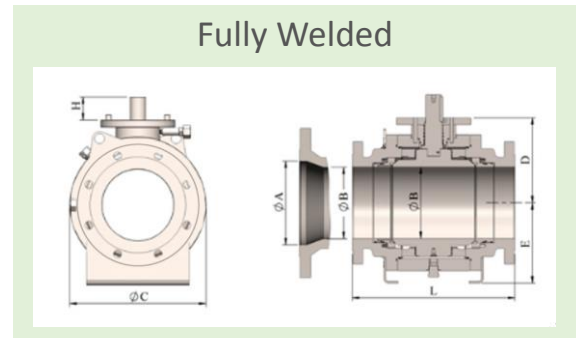
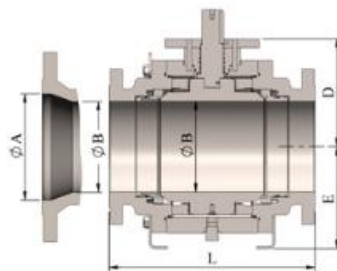
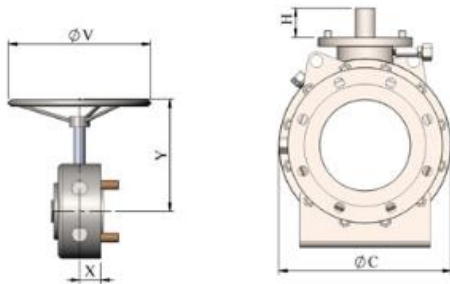
SIZE in/mm	A	B	L-WE	L-RF	L-RTJ	C	D	E	H	W	V	X	Y	Weight lb/kg
30	28.94	28.94	55	55	56	49.13	27.52	31.73	8.07	n/a	30.0	8.07	23.5	14498
750	735	735	1397	1397	1422	1248	699	806	205	n/a	762	205	597	6590
32	30.67	30.67	60	60	61.1	51.50	29.02	33.27	8.07	n/a	30.0	8.07	23.5	17450
800	779	779	1524	1524	1553	1308	737	845	205	n/a	762	205	597	7932
34	32.68	32.68	64	64	65.1	53.90	30.87	34.37	8.07	n/a	30.0	8.07	23.5	19888
850	830	830	1626	1626	1654	1369	784	873	205	n/a	762	205	597	9040
36	34.41	34.41	68	68	69.1	57.36	32.36	35.75	8.07	n/a	30.0	8.07	23.5	22205
900	874	874	1727	1727	1756	1457	822	908	205	n/a	762	205	597	10093
40	38.43	38.43	(*)	(*)	(*)	64.49	35.63	39.37	8.07	n/a	32.0	8.07	23.5	30305
1000	976	976	(*)	(*)	(*)	1638	905	1000	205	n/a	812	205	597	13775
42	40.16	40.16	(*)	(*)	(*)	72.05	38.11	40.75	8.07	n/a	32.0	8.07	23.5	35431
1050	1020	1020	(*)	(*)	(*)	1830	968	1035	205	n/a	812	205	597	16105
48	45.91	45.91	(*)	(*)	(*)	78.27	44.37	46.38	8.07	n/a	32.0	8.07	25.0	52932
1200	1166	1166	(*)	(*)	(*)	1988	1127	1178	205	n/a	812	205	635	24060
54	51.65	51.65	(*)	(*)	(*)	86.42	46.73	47.87	9.65	n/a	32.0	9.65	25.0	75403
1350	1312	1312	(*)	(*)	(*)	2195	1187	1216	245	n/a	812	245	635	34158
56	57.40	57.40	(*)	(*)	(*)	90.75	50.39	52.01	9.65	n/a	32.0	9.65	25.0	83941
1400	1458	1458	(*)	(*)	(*)	2305	1280	1321	245	n/a	812	245	635	38155

Note: (*) Upon Request. For dimensions & weights in larger sizes consult the factory.
Dimensions C, D, E, H, V, X, Y and weights are subject to change without notice.

600 Plate Trunnion Ball Valve

ASME CLASS 600 E1 Series

SIZE in/mm	A	B	L-WE	L-RF	L-RTJ	C	D	E	H	W	V	X	Y	Weight lb/kg
6	5.91	5.91	22	22	22.13	14.02	9.13	8.66	2.56	44.0	16.0	2.56	8.75	563
150	150	150	559	559	562	356	232	220	65	1118	406	65	292	255
8	7.91	7.91	26	26	26.13	16.73	10.83	10.63	2.56	n/a	20.0	2.56	8.75	984
200	201	201	660	660	664	425	275	270	65	n/a	508	65	292	446
10	9.92	9.92	31	31	31.13	20.00	12.91	12.40	3.54	n/a	20.0	3.54	8.75	1630
250	252	252	787	787	790	508	328	315	90	n/a	508	90	292	739
12	11.93	11.93	33	33	33.13	23.78	14.49	15.20	3.94	n/a	24.0	3.94	16.5	2270
300	303	303	838	838	841	604	368	386	100	n/a	610	100	419	1030
14	13.15	13.15	35	35	35.12	25.20	15.24	14.80	3.94	n/a	24.0	3.94	16.5	2790
350	334	334	889	889	892	640	387	376	100	n/a	610	100	419	1266
16	15.16	15.16	39	39	39.12	29.13	17.32	17.52	4.53	n/a	28.0	4.53	16.5	3350
400	385	385	991	991	994	740	440	445	115	n/a	711	115	419	1520
18	17.17	17.17	43	43	43.12	30.98	18.70	18.70	5.51	n/a	28.0	5.51	16.5	4690
450	436	436	1092	1092	1095	787	475	475	140	n/a	711	140	419	2127
20	19.17	19.17	47	47	47.25	33.90	19.37	23.62	7.09	n/a	30.0	7.09	22.0	6340
500	487	487	1194	1194	1200	861	492	600	180	n/a	762	180	559	2876
22	21.18	21.18	51	51	51.38	37.36	21.14	25.59	7.09	n/a	30.0	7.09	22.0	7870
550	538	538	1295	1295	1305	949	537	650	180	n/a	762	180	559	3570
24	23.19	23.19	55	55	55.38	42.20	24.06	27.13	7.28	n/a	32.0	7.28	22.0	9430
600	589	589	1397	1397	1407	1072	611	689	185	n/a	812	185	559	4277
26	24.92	24.92	57	57	57.5	42.99	24.49	28.74	8.07	n/a	32.0	8.07	22.0	11970
650	633	633	1448	1448	1461	1092	622	730	205	n/a	812	205	559	5430
28	26.93	26.93	61	61	61.5	46.18	25.87	30.51	8.07	n/a	32.0	8.07	23.5	13690
700	684	684	1549	1549	1562	1173	657	775	205	n/a	812	205	597	6210



ASME CLASS 600 E1 Series

SIZE in/mm	A	B	L-WE	L-RF	L-RTJ	C	D	E	H	W	V	X	Y	Weight lb/kg
30	28.94	28.94	65	65	65.5	50.12	27.52	32.64	9.65	n/a	32.0	9.65	23.5	16420
750	735	735	1651	1651	1664	1273	699	829	245	n/a	812	245	597	7448
32	30.67	30.67	70	70	70.63	52.52	29.02	34.25	9.65	n/a	32.0	9.65	23.5	18670
800	779	779	1778	1778	1794	1334	737	870	245	n/a	812	245	597	8469
34	32.68	32.68	76	76	76.63	55.00	30.87	35.39	9.65	n/a	32.0	9.65	23.5	22830
850	830	830	1930	1930	1946	1397	784	899	245	n/a	812	245	597	10356
36	34.41	34.41	82	82	82.63	58.50	32.36	36.81	9.65	n/a	36.0	9.65	23.5	26630
900	874	874	2083	2083	2099	1486	822	935	245	n/a	914	245	597	12079
40	38.43	38.43	(*)	(*)	(*)	65.87	35.63	40.51	9.65	n/a	36.0	9.65	23.5	33990
1000	976	976	(*)	(*)	(*)	1673	905	1029	245	n/a	914	245	597	15418
42	40.16	40.16	(*)	(*)	(*)	69.49	38.11	42.01	9.65	n/a	36.0	9.65	23.5	40070
1050	1020	1020	(*)	(*)	(*)	1765	968	1067	245	n/a	914	245	597	18175
48	45.91	45.91	85.88	85.88	(*)	79.88	44.37	47.87	9.65	n/a	36.0	9.65	25.0	55680
1200	1166	1166	2181	2181	(*)	2029	1127	1216	245	n/a	914	245	635	25256
54	51.65	51.65	(*)	(*)	(*)	89.57	46.85	50.63	9.65	n/a	36.0	9.65	25.0	79757
1350	1312	1312	(*)	(*)	(*)	2275	1190	1286	245	n/a	914	245	635	36130
56	57.40	57.40	(*)	(*)	(*)	92.64	50.39	54.37	11.02	n/a	36.0	11.02	25.0	85250
1400	1458	1458	(*)	(*)	(*)	2353	1280	1381	280	n/a	914	280	635	38669

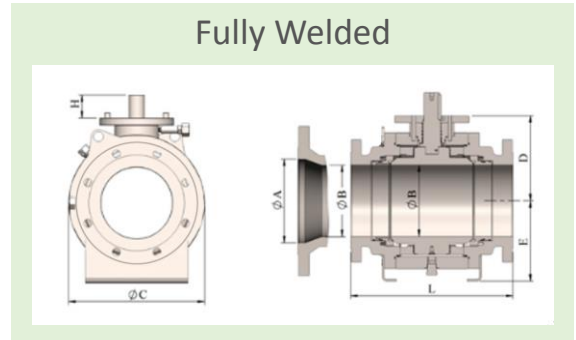
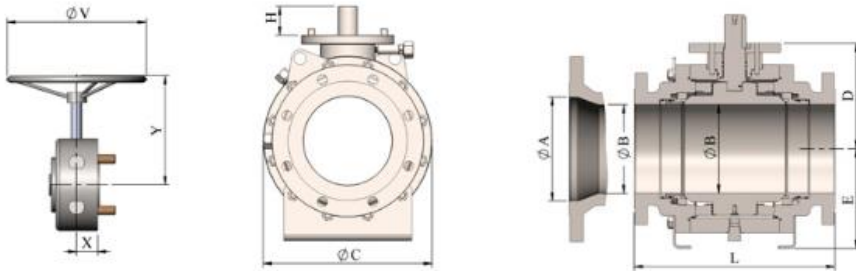
Note: (*) Upon Request. For dimensions & weights in larger sizes consult the factory.
Dimensions C, D, E, H, V, X, Y and weights are subject to change without notice.



900 Plate Trunnion Ball Valve

ASME CLASS 900 E1 Series

SIZE in/mm	A	B	L-WE	L-RF	L-RTJ	C	D	E	H	W	V	X	Y	Weight lb/kg
6	5.91	5.91	24	24	24.12	15.00	9.45	9.65	2.56	n/a	16.0	2.56	8.75	720
150	150	150	610	610	613	381	240	245	65	n/a	406	65	292	327
8	7.91	7.91	29	29	29.12	18.50	15.08	13.58	3.54	n/a	20.0	3.54	16.5	1276
200	201	201	737	737	740	470	383	300	90	n/a	508	90	419	580
10	9.92	9.92	33	33	33.12	21.65	13.78	14.80	3.74	n/a	20.0	3.74	16.5	2110
250	252	252	838	838	841	550	350	345	95	n/a	508	95	419	957
12	11.93	11.93	38	38	38.12	24.02	14.80	18.11	4.72	n/a	24.0	4.72	16.5	2930
300	303	303	965	965	968	610	376	376	120	n/a	610	120	419	1329
14	12.68	12.68	40.5	40.5	40.88	27.56	16.46	18.31	4.72	n/a	24.0	4.72	16.5	3610
350	322	322	1029	1029	1038	700	418	460	120	n/a	610	120	419	1637
16	14.69	14.69	44.5	44.5	44.88	30.98	18.62	20.87	5.71	n/a	28.0	5.71	16.5	4360
400	373	373	1130	1130	1140	787	473	465	145	n/a	711	145	419	1978
18	16.65	16.65	48	48	48.5	33.50	19.13	20.28	5.71	n/a	28.0	5.71	16.5	6100
450	423	423	1219	1219	1232	851	486	530	145	n/a	711	145	419	2767
20	18.54	18.54	52	52	52.5	37.40	21.85	25.59	5.71	n/a	30.0	5.71	22.0	8240
500	471	471	1321	1321	1334	950	555	515	145	n/a	762	145	559	3738
22	20.55	20.55	(*)	(*)	(*)	40.51	22.05	25.59	8.11	n/a	30.0	8.11	22.0	10220
550	522	522	(*)	(*)	(*)	1029	560	650	206	n/a	762	206	559	4636
24	22.44	22.44	61	61	61.75	43.74	24.37	27.52	9.65	n/a	32.0	9.65	22.0	12250
600	570	570	1549	1549	1568	1111	619	699	245	n/a	812	245	559	5557



ASME CLASS 900 E1 Series

SIZE in/mm	A	B	L-WE	L-RF	L-RTJ	C	D	E	H	W	V	X	Y	Weight lb/kg
26	24.29	24.29	(*)	(*)	(*)	47.24	26.26	29.88	9.65	n/a	32.0	9.65	22.0	15540
650	617	617	(*)	(*)	(*)	1200	667	759	245	n/a	812	245	559	7049
28	26.18	26.18	(*)	(*)	(*)	50.75	27.87	31.89	9.65	n/a	32.0	9.65	23.5	17790
700	665	665	(*)	(*)	(*)	1289	708	810	245	n/a	812	245	597	8069
30	28.03	28.03	(*)	(*)	(*)	53.39	29.65	32.76	9.65	n/a	32.0	9.65	23.5	21340
750	712	712	(*)	(*)	(*)	1356	753	832	245	n/a	812	245	597	9680
32	29.92	29.92	(*)	(*)	(*)	57.52	31.89	35.87	9.65	n/a	32.0	9.65	23.5	24250
800	760	760	(*)	(*)	(*)	1461	810	911	245	n/a	812	245	597	11000
34	31.81	31.81	(*)	(*)	(*)	60.98	33.39	37.76	9.65	n/a	32.0	9.65	23.5	29690
850	808	808	(*)	(*)	(*)	1549	848	959	245	n/a	812	245	597	13467
36	33.66	33.66	(*)	(*)	(*)	64.37	34.76	40.12	10.83	n/a	36.0	10.83	23.5	34610
900	855	855	(*)	(*)	(*)	1635	883	1019	275	n/a	914	275	597	15699
40	37.64	37.64	(*)	(*)	(*)	71.26	38.27	44.09	10.83	n/a	36.0	10.83	25.0	44170
1000	956	956	(*)	(*)	(*)	1810	972	1120	275	n/a	914	275	635	20035
42	39.61	39.61	(*)	(*)	(*)	74.33	41.73	47.24	10.83	n/a	36.0	10.83	25.0	52070
1050	1006	1006	(*)	(*)	(*)	1888	1060	1200	275	n/a	914	275	635	23619
48	45.24	45.24	(*)	(*)	(*)	81.50	43.74	50.39	10.83	n/a	36.0	10.83	25.0	72370
1200	1149	1149	(*)	(*)	(*)	2070	1111	1280	275	n/a	914	275	635	32826

Note: (*) Upon Request. For dimensions & weights in larger sizes consult the factory.
Dimensions C, D, E, H, V, X, Y and weights are subject to change without notice.

1500~2500# Plate Trunnion Ball Valve

ASME CLASS 1500 E1 Series

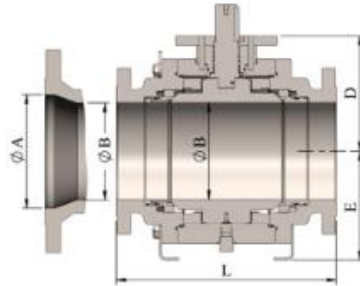
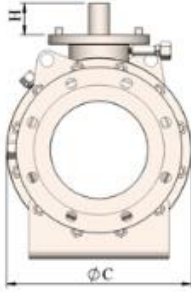
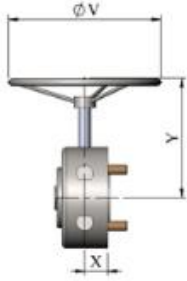
SIZE in/mm	A	B	L-WE	L-RF	L-RTJ	C	D	E	H	W	V	X	Y	Weight lb/kg
6	5.67	5.67	27.76	27.76	27.99	16.89	10.98	12.64	3.74	n/a	24.0	3.74	13.8	1056
150	144	144	705	705	711	429	279	321	95	n/a	610	95	350	480
8	7.56	7.56	32.76	32.76	33.11	20.51	13.23	16.54	3.78	n/a	28.0	3.78	16.5	1804
200	192	192	832	832	841	521	336	322	96	n/a	711	96	419	820
10	9.41	9.41	39.02	39.02	39.37	25.75	15.39	16.54	4.53	n/a	28.0	4.53	16.5	3300
250	239	239	991	991	1000	654	391	420	115	n/a	711	115	419	1500
12	11.30	11.30	44.49	44.49	45.11	27.17	16.77	20.28	5.71	n/a	28.0	5.71	16.5	4950
300	287	287	1130	1130	1146	690	426	420	145	n/a	711	145	419	2250
14	12.40	12.40	49.49	49.49	50.24	34.25	19.25	20.35	5.91	n/a	30.0	5.91	22.0	6270
350	315	315	1257	1257	1276	870	489	515	150	n/a	762	150	559	2850
16	14.17	14.17	54.49	54.49	55.39	34.84	19.57	27.56	5.91	n/a	30.0	5.91	22.0	8954
400	360	360	1384	1384	1407	885	497	517	150	n/a	762	150	559	4070
18	15.94	15.94	60.51	60.51	61.38	42.87	23.27	29.88	7.87	n/a	32.0	7.87	22.0	13629
450	405	405	1537	1537	1559	1089	591	700	200	n/a	812	200	559	6195
20	17.91	17.91	65.51	65.51	66.38	46.38	28.50	35.04	9.65	n/a	32.0	9.65	25.0	19965
500	455	455	1664	1664	1686	1178	724	759	245	n/a	812	245	635	9075
24	20.87	20.87	*	*	77.64	55.87	32.01	35.04	9.65	n/a	32.0	9.65	25.0	31416
600	530	530	*	*	1972	1419	813	890	245	n/a	812	245	635	14280

ASME CLASS 2500 E1 Series

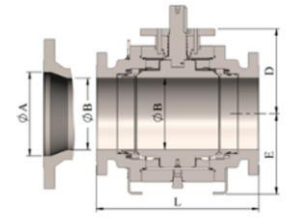
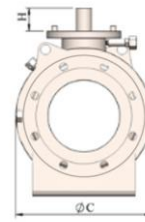
SIZE in/mm	A	B	L-WE	L-RF	L-RTJ	C	D	E	H	W	V	X	Y	Weight lb/kg
6	5.16	5.16	35.98	35.98	36.50	19.02	13.39	13.46	3.74	n/a	28.0	3.74	16.5	2116
150	131	131	914	914	927	483	340	342	95	n/a	711	95	419	952
8	7.05	7.05	40.24	40.24	40.87	24.80	16.30	17.13	4.33	n/a	28.0	4.33	16.5	3905
200	179	179	1022	1022	1038	630	414	395	110	n/a	711	110	419	1769
10	8.78	8.78	50.00	50.00	50.87	31.10	18.27	19.65	5.51	n/a	30.0	5.51	22.0	5715
250	223	223	1270	1270	1292	790	464	435	140	n/a	762	140	559	2589
12	10.43	10.43	55.98	55.98	56.89	34.25	20.51	0.00	5.51	n/a	32.0	5.51	22.0	7837
300	265	265	1422	1422	1445	870	521	499	140	n/a	812	140	559	3550



JDV CONTROL VALVES



Fully Welded

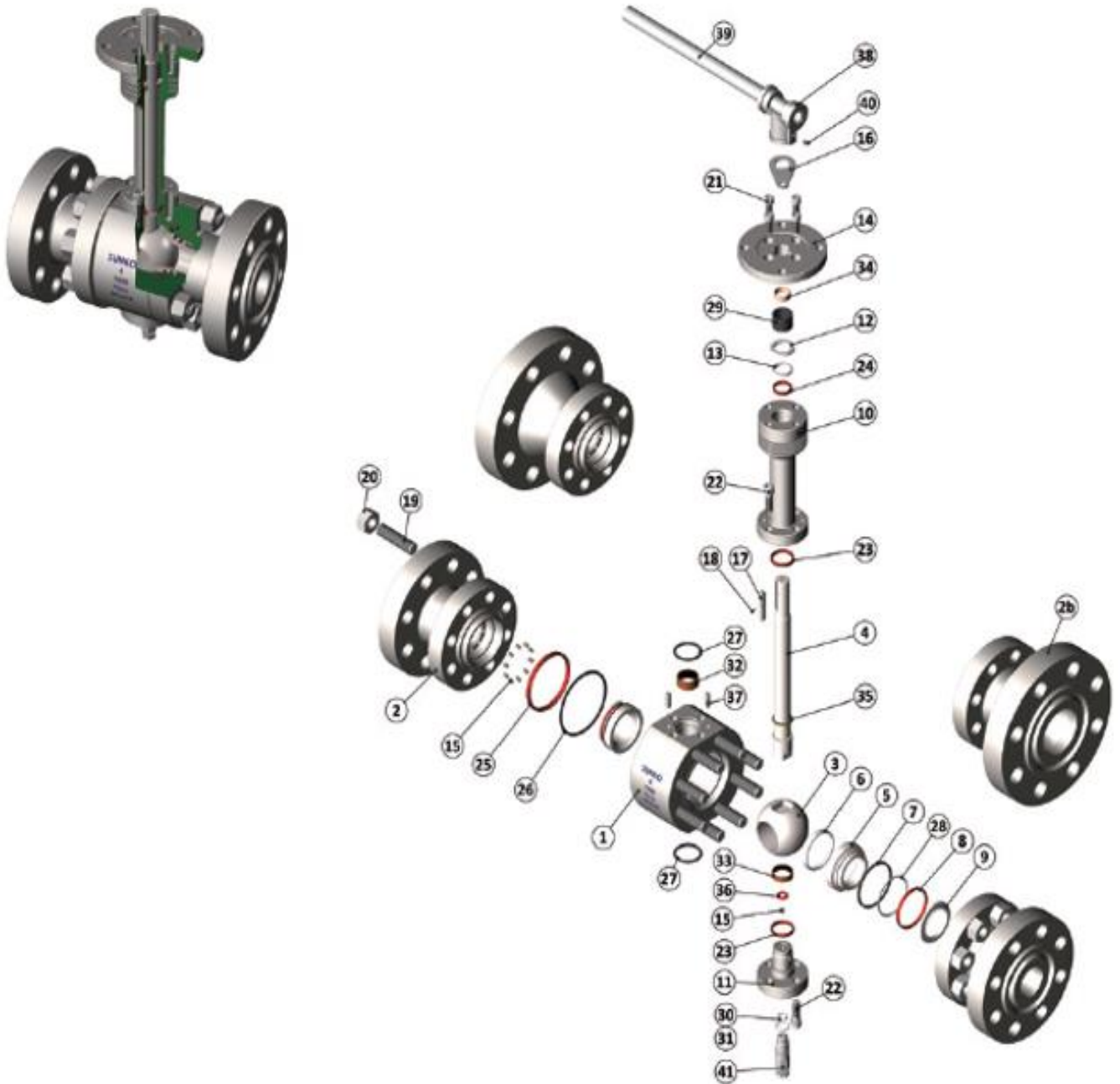


FOR E1 Series Reduced Bore Ball Valve

CLASS 150		CLASS 300		CLASS 600		CLASS 900		CLASS 1500		CLASS 2500	
SIZE in/mm	Weight lb/kg	SIZE in/mm	Weight lb/kg	SIZE in/mm	Weight lb/kg	SIZE in/mm	Weight lb/kg	SIZE in/mm	Weight lb/kg	SIZE in/mm	Weight lb/kg
8x6x8	407	8x6x8	481.8	8x6x8	642	8x6x8	968	8x6x8	1245	8x6x8	2530
200x150	185	200x150	219	200x150	292	200x150	440	200x150	566	200x150	1150
10x8x10	640	10x8x10	642.4	10x8x10	1210	10x8x10	1518	10x8x10	2248	10x8x10	4620
250x200	291	250x200	292	250x200	550	250x200	690	250x200	1022	250x200	2100
12x10x12	1016	12x10x12	1306.8	12x10x12	1784	12x10x12	2541	12x10x12	3872	12x10x12	7260
300x250	462	300x250	594	300x250	811	300x250	1155	300x250	1760	300x250	3300
14x10x14	1140	14x10x14	1414.6	14x10x14	2006	14x10x14	2728	14x10x14	4719	14x10x14	9017
350x250	518	350x250	643	350x250	912	350x250	1240	350x250	2145	350x250	4085
14x12x14	1342	14x12x14	1795.2	14x12x14	2519	14x12x14	3597	14x12x14	5500	14x12x14	10143
350x300	610	350x300	816	350x300	1145	350x300	1635	350x300	2500	350x300	4595
16x12x16	1536	16x12x16	2123	16x12x16	2966	16x12x16	3806	16x12x16	6160	16x12x16	12117
400x300	698	400x300	965	400x300	1348	400x300	1730	400x300	2800	400x300	5489
16x14x16	1804	16x14x16	2475	16x14x16	2383	16x14x16	3740	16x14x16	7139	16x14x16	14139
400x350	820	400x350	1125	400x350	1083	400x350	1700	400x350	3245	400x350	6490
18x14x18	2332	18x14x18	3504.6	18x14x18	3696	18x14x18	5368	18x14x18	10934	18x14x18	21868
450x350	1060	450x350	1593	450x350	1680	450x350	2440	450x350	4970	450x350	9940
20x16x20	2420	20x16x20	3658.6	20x16x20	4587	20x16x20	6325	20x16x20	11297	20x16x20	22594
500x400	1100	500x400	1663	500x400	2085	500x400	2875	500x400	5135	500x400	10270
24x20x24	4334	24x20x24	5854.2	24x20x24	7146	24x20x24	11880	24x20x24	23925	24x20x24	47850
600x500	1970	600x500	2661	600x500	3248	600x500	5400	600x500	10875	600x500	21750
30x24x30	7150	30x24x30	9864.8	30x24x30	12690	30x24x30	19140	30x24x30	36821	30x24x30	73642
750x600	3250	750x600	4484	750x600	5768	750x600	8700	750x600	16680	750x600	33360

Note: (*) Upon Request. For dimensions & weights in larger sizes consult the factory.
Dimensions C, D, E, H, V, X, Y and weights are subject to change without notice.

Valves Components Assembly / Cryogenic Trunnion Ball Valve



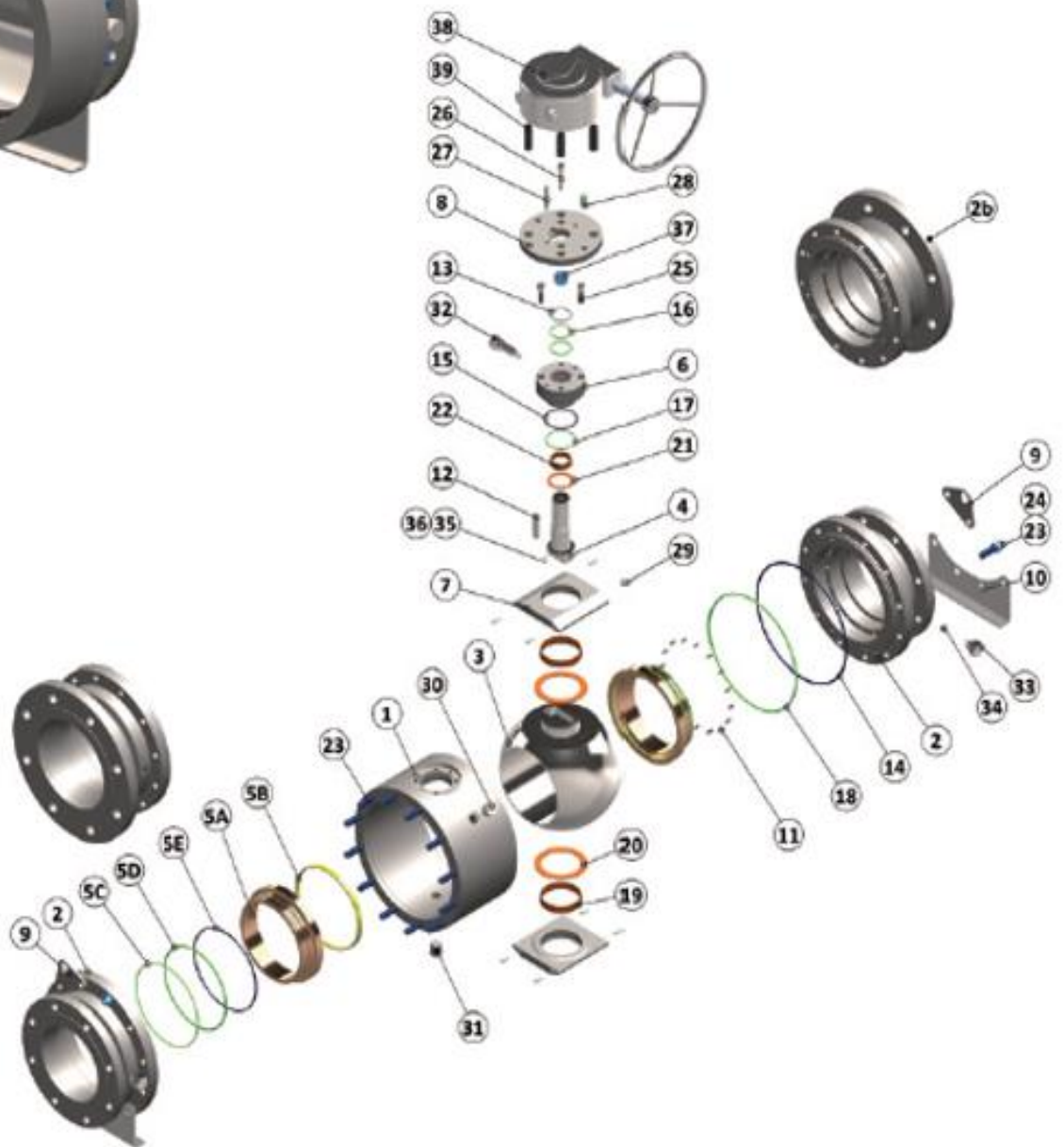


**JDV
CONTROL
VALVES**

Technical Specifications

ITEM	PART	ASME CLASS	STAINLESS STEEL -101°C (NACE)	STAINLESS STEEL -196°C (NACE)
1	Body	All	A182 Gr.316	A182 Gr.316
2	Tailpiece	All	A182 Gr.316	A182 Gr.316
2b	RB Tailpiece	All	A182 Gr.316	A182 Gr.316
3	Ball	All	A182 Gr.316	A182 Gr.316
4	Stem	All	A182 Gr.316	A182 Gr.316
5	Seat Retainer	All	A182 Gr.316	A182 Gr.316
6	Seat Insert	All	PCTFE	PCTFE
7	Fire-safe Gasket	All	G raphite	G raphite
8	Seat Lipseal	All	316 S.S.+RPTFE	Elgiloy+RPTFE
9	Seat Plate	All	A182 Gr.316	A182 Gr.316
10	Gland	All	A182 Gr.316	A182 Gr.316
11	Post Trunnion	All	A182 Gr.316	A182 Gr.316
12	Stop Ring	All	A182 Gr.316	A182 Gr.316
13	Gland Ring	All	A182 Gr.316	A182 Gr.316
14	Gland Plate	All	A182 Gr.316	A182 Gr.316
15	Spring	All	Inconel X750	Inconel X750
16	Locking Plate	All	Stainless Steel	Stainless Steel
17	Key	All	Stainless Steel	Stainless Steel
18	Spring Pin	All	AISI 1588	AISI 1588
19	Body Studs	All	A193 Gr.B8M	A193 Gr.B8M
20	Body Nuts	All	A194 Gr.8M	A194 Gr.8M
21	Gland Bolt	All	A193 Gr.B8M	A193 Gr.B8M
22	Trunnion Bolt	All	A193 Gr.B8M	A193 Gr.B8M
23	Trunnion Lipseal	All	316 S.S.+RPTFE	Elgiloy+RPTFE
24	Stem Lipseal	All	316 S.S.+RPTFE	Elgiloy+RPTFE
25	Body Lipseal	All	316 S.S.+RPTFE	Elgiloy+RPTFE
26	Body Fire-safe Gasket	900 through 2500	Spiral Wound Gasket	Spiral Wound Gasket
27	Trunnion Fire-safe Gasket	All	Spiral Wound Gasket	Spiral Wound Gasket
28	Lipseal Back-up Ring	600 through 2500	RPTFE	RPTFE
29	Stem Packing	All	Graphite	Graphite
30	O-Rings	All	PTFE	PTFE
31	O-Rings	All	PTFE	PTFE
32	Stem Bearing	All	SS + Filled PTFE	SS + Filled PTFE
33	Trunnion Bearing	All	SS + Filled PTFE	SS + Filled PTFE
34	Stem Bearing	All	SS + Filled PTFE	SS + Filled PTFE
35	Stem Thrust Bearing	All	PCTFE	PCTFE
36	Ball Thrust Bearing	All	PCTFE	PCTFE
37	Parallel Pins	All	A276 Gr.316	A276 Gr.316
38	Handle Guide	All	A216 Gr.WCB+Zn	A216 Gr.WCB+Zn
39	Pipe	All	Carbon Steel+Painting	Carbon Steel+Painting
40	Handle Screw	All	Stainless Steel	Stainless Steel
41	Vent Valve	All	A276 Gr.316	A276 Gr.316

Valves Components Assembly / Plate trunnion Ball Valve



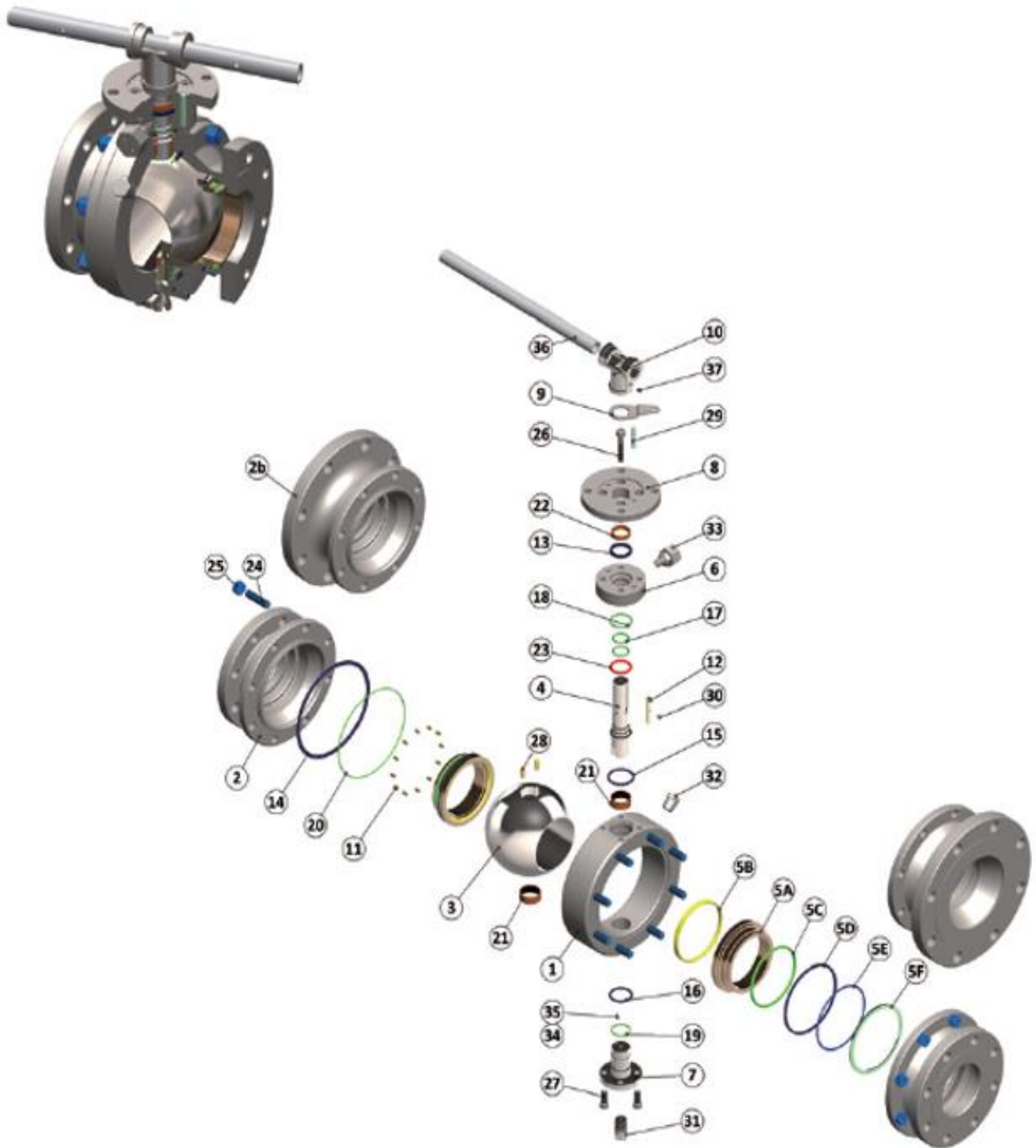


**JDV
CONTROL
VALVES**

Technical Specifications

ITEM	PART	ASME CLASS	STANDARD (NACE)	LOW TEMP (NACE)	STAINLESS STEEL (NACE)
1	Body	All	A105	A350 LF2	A182 Gr.316
2	Tailpiece	All	A105	A350 LF2	A182 Gr.316
3	Ball	150 through 900	A105 + ENP	A350 LF2 + ENP	A182 Gr.316
	Ball	1500 & 2500	4130/4140 + ENP	4130/4140 + ENP	A564 Type 630
4	Stem	150 through 900	4130/4140 + ENP	4130/4140 + ENP	A182 Gr.316
		1500 & 2500	4130/4140 + ENP	4130/4140 + ENP	A564 Type 630
5A	Seat Ring	150 through 2500	A105+ENP	A350 LF2+ENP	A182 Gr.316
5B	Seat Insert	150 through 300	Filled PTFE	Filled PTFE	Filled PTFE
		600 through 2500	Nylon / Devlon / PEEK	Nylon / Devlon / PEEK	Nylon / Devlon / PEEK
5C	O-Ring	All	HNBR / FKM	HNBR / FKM	HNBR / FKM
5D	O-Ring	All	HNBR / FKM	HNBR / FKM	HNBR / FKM
5E	Seat Fire Safe Seal	All	Graphite	Graphite	Graphite
6	Gland	All	A105	A350 LF2	A182 Gr.316
7	Plate Trunnion	All	4130/4140 + ENP	4130/4140 + ENP	A182 Gr.316
8	Gland Plate	All	A105	A350 LF2	A182 Gr.316
9	Lifting Plate	All	Carbon Steel	Carbon Steel	Stainless Steel
10	Leg Plate	All	Carbon Steel	Carbon Steel	Stainless Steel
11	Seat Spring	All	Inconel X750	Inconel X750	Inconel X750
12	Key	All	Carbon Steel	Carbon Steel	Stainless Steel
13	Stem Packing	All	Graphite	Graphite	Graphite
14	Body Fire Safe Seal	All	Spiral Wound Gasket	Spiral Wound Gasket	Spiral Wound Gasket
15	Gland Fire Safe Seal	All	Spiral Wound Gasket	Spiral Wound Gasket	Spiral Wound Gasket
16	Stem O-Ring	All	HNBR / FKM	HNBR / FKM	HNBR / FKM
17	Gland O-Ring	All	HNBR / FKM	HNBR / FKM	HNBR / FKM
18	Body O-Ring	All	HNBR / FKM	HNBR / FKM	HNBR / FKM
19	DU Bearing	All	CS + Filled PTFE	SS + Filled PTFE	SS + Filled PTFE
20	DU Thrust Bearing	All	CS + Filled PTFE	SS + Filled PTFE	SS + Filled PTFE
21	Stem Thrust Bearing	All	CS + Filled PTFE	SS + Filled PTFE	SS + Filled PTFE
22	Stem DU Bearing	All	CS + Filled PTFE	SS + Filled PTFE	SS + Filled PTFE
23	Body Studs	All	A193 Gr.B7M	A193 Gr.L7M	A193 Gr.B8M
24	Body Nuts	All	A194 Gr.2HM	A194 Gr.7M	A194 Gr.8M
25	Gland Bolt	All	A193 Gr.B7M	A193 Gr.L7M	A193 Gr.B8M
26	Gland Plate Bolt	All	A193 Gr.B7M	A193 Gr.L7M	A193 Gr.B8M
27	Parallel Pins	All	AISI 1045	AISI 1045	Stainless Steel
28	Parallel Pins	All	AISI 1045	AISI 1045	Stainless Steel
29	Parallel Pins	All	A276 Gr.316	A276 Gr.316	A276 Gr.316
30	Vent Valve	All	A276 Gr.316	A276 Gr.316	A276 Gr.316
31	Plug	All	A276 Gr.316	A276 Gr.316	A276 Gr.316
32	Stem Injection Fitting	All	A105+Zn (Main Material)	Stainless Steel	A276 Gr.316
33	Seat Injection Fitting	All	A105+Zn (Main Material)	Stainless Steel	A276 Gr.316
34	Seat Check Valve	All	A276 Gr.316	A276 Gr.316	A276 Gr.316
35	Anti-static Ball	All	316 S.S.	316 S.S.	316 S.S.
36	Anti-Static Spring	All	316 S.S.	316 S.S.	316 S.S.
37	Gear Nuts	All	A194 Gr.2HM	A194 Gr.7M	A194 Gr.8M
38	Gear	All	A216 Gr.WCB	A216 Gr.WCB	A216 Gr.WCB
39	Gear Bolts	All	A193 Gr.B7M	A193 Gr.L7M	A193 Gr.B8M

Valves Components Assembly Post Trunnion Ball Valve





**JDV
CONTROL
VALVES**

Technical Specifications

ITEM	PART	ASME CLASS	STANDARD (NACE)	LOW TEMP (NACE)	STAINLESS STEEL (NACE)
1	Body	All	A105	A350 LF2	A182 Gr.316
2	Tailpiece	All	A105	A350 LF2	A182 Gr.316
2b	RB Tailpiece	All	A105	A350 LF2	A182 Gr.316
3	Ball	150 through 900	A105 + ENP	A350 LF2 + ENP	A182 Gr.316
		1500 & 2500	4130/4140 + ENP	4130/4140 + ENP	A564 Type 630
4	Stem	150 through 900	4130/4140 + ENP	4130/4140 + ENP	A182 Gr.316
		1500 & 2500	4130/4140 + ENP	4130/4140 + ENP	A564 Type 630
5A	Seat Ring	150 through 2500	A105+ENP	A350 LF2+ENP	A182 Gr.316
5B	Seat Insert	150 through 300	Filled PTFE	Filled PTFE	Filled PTFE
		600 through 2500	Nylon / Devlon / PEEK	Nylon / Devlon / PEEK	Nylon / Devlon / PEEK
5C	O-Ring	All	HNBR / FKM	HNBR / FKM	HNBR / FKM
5D	Seat Fire Safe Seal	All	Graphite	Graphite	Graphite
5E	Back-up Ring	All	PTFE	PTFE	PTFE
5F	Seat Plate	All	A105+ENP	A350 LF2+ENP	A182 Gr.316
6	Gland	All	A105	A350 LF2	A182 Gr.316
7	Post Trunnion	All	A105	A350 LF2	A182 Gr.316
8	Gland Plate	All	A105	A350 LF2	A182 Gr.316
9	Locking Plate	All	Carbon Steel+Zn	Carbon Steel+Zn	Stainless Steel
10	Handle Guide	All	A216 Gr.WCB	A216 Gr.WCB	A216 Gr.WCB+Zn
11	Seat Spring	All	Inconel X750	Inconel X750	Inconel X750
12	Key	All	Carbon Steel	Carbon Steel	Stainless Steel
13	Stem Packing	All	Graphite	Graphite	Graphite
14	Body Fire Safe Seal	All	Spiral Wound Gasket	Spiral Wound Gasket	Spiral Wound Gasket
15	Gland Fire Safe Seal	All	Spiral Wound Gasket	Spiral Wound Gasket	Spiral Wound Gasket
16	Trunnion Fire Safe Seal	All	Spiral Wound Gasket	Spiral Wound Gasket	Spiral Wound Gasket
17	Stem O-Ring	All	HNBR / FKM	HNBR / FKM	HNBR / FKM
18	Gland O-Ring	All	HNBR / FKM	HNBR / FKM	HNBR / FKM
19	Trunnion O-Ring	All	HNBR / FKM	HNBR / FKM	HNBR / FKM
20	Body O-Ring	All	HNBR / FKM	HNBR / FKM	HNBR / FKM
21	DU Bearing	All	CS + Filled PTFE	SS + Filled PTFE	SS + Filled PTFE
22	DU Bearing	All	CS + Filled PTFE	SS + Filled PTFE	SS + Filled PTFE
23	Stem Thrust Bearing	All	CS + Filled PTFE	SS + Filled PTFE	SS + Filled PTFE
24	Body Studs	All	A193 Gr.B7M	A193 Gr.L7M	A193 Gr.B8M
25	Body Nuts	All	A194 Gr.2HM	A194 Gr.7M	A194 Gr.8M
26	Gland Bolt	All	A193 Gr.B7M	A193 Gr.L7M	A193 Gr.B8M
27	Trunnion Bolt	All	A193 Gr.B7M	A193 Gr.L7M	A193 Gr.B8M
28	Parallel Pins	All	AISI 1045	AISI 1045	Stainless Steel
29	Parallel Pins	All	AISI 1045	AISI 1045	Stainless Steel
30	Spring Pins	All	AISI 1566	AISI 1566	AISI 1566
31	Vent Valve	All	A105+Zn (Main Material)	A276 Gr.316	A276 Gr.316
32	Plug	All	A276 Gr.316	A276 Gr.316	A276 Gr.316
33	Stem Injection Fitting	All	A105+Zn (Main Material)	A276 Gr.316	A276 Gr.316
34	Anti-static Ball	All	316 S.S.	316 S.S.	316 S.S.
35	Anti-Static Spring	All	316 S.S.	316 S.S.	316 S.S.
36	Pipe	All	Carbon Steel+Painting	Carbon Steel+Painting	Carbon Steel+Painting
37	Handle Screw	All	Carbon Steel+Painting	Carbon Steel+Painting	Carbon Steel+Painting

HOW TO ORDER

EXAMPLES : A B C D E

C2 - 04 - A - 1 - 1

☆ A. SPECIFICATION	☆ B. BODYMATL	☆ C. BORE	☆ D. END CONNECTIONS	☆ E. OPERATOR
C1 ASME CLASS 150	02 A105N	A Full	1 RF/RF	1 Lever
C2 ASME CLASS 300	03 A350-LF2	B Reduced	2 WE/WE	1A Extension lever
C3 ASME CLASS 600	04 A182-F316	C Venturi	3 RF/WE	2 Worm gear
C4 ASME CLASS 900		D All Others	4 RTJ/RTJ	2A Extension worm gear
C5 ASME CLASS 1500			5 RTJ/WE	4 Subsea gear
C6 ASME CLASS 2500			6 All Others	4A Subsea gear 300 feet +
				7 Direct stem
				7A Extension direct stem
				8 Worm gear/adapted
				8A Extension worm gear/adapted
				22 Square
				22A Extension square NutlMtg/Flg
				23 Worm gear with 2" square operating nut
				23A Worm gear with right angle pinion shaft extension and 2 " square operating nut



■ HEADQUARTERS

NO. 6-1, QINGNIAN RD., YANGMEI DIST., TAOYUAN CITY 326, TAIWAN

TEL +886-3-4965066 FAX +886-3-4963526 E-MAIL: sales@jdv.com.tw



Copyright 2018/12. All rights are reserved by JDV.
The technical data and content may be changed without prior notice.