



JDV
CONTROL
VALVES



JBF-L / JBF-LM Cryogenic Type

Floating Type **Soft** **Metal** Seat Ball Valve

浮动式软密封/金属密封低温球阀



*We link all you need
and more than you expect.*



TAIWAN
EXCELLENCE 2015



**JDV
CONTROL
VALVES**

JBF-L / JBF-LM

Floating Type **Soft Metal** Seat Ball Valve 浮动式软密封/金属密封低温球阀

Full Bore Two-Piece Flanged Ends 全口径二片式法兰球阀
JIS 10/20K ASME CLASS 150/300 DIN PN16/40

In order to satisfy the ever growing needs of high-quality cryogenic valves for a wide range of industries, our skilled engineers, who already possess an extensive experience in critical applications, designed the JBF-L/JBF-LM Cryogenic Series. Based on the successful and renowned design of the JBF-L/JBF-LM Series, our cryogenic products offer an unmatched level of reliability, stability and most importantly safety, whatever the low temperature medium may be: oxygen, nitrogen, hydrogen, helium, argon, etc.

JDV通过对JBF/JBFM系列阀杆延伸的设计,开发了低温球阀系列,应用于炼油、石化等低温工况场合

Product Features

1. Available in soft and metal seats to meet the requirements of all kinds of industries.
可选择的软/硬密封设计,可满足各种产业需求
2. Highly precise machining enabling the seat leakage to reach the strict requirements standard.
精湛的制造工艺,确保阀座防泄漏能力达到最严格的标准
3. Extended stem protecting efficiently the actuator from the frozen temperature of the medium.
加长型阀杆,有效的防护驱动器不被低温流体介质影响,维持正常运作
4. Spring-loaded design keeping the metal seat in tight contact with the ball, even at low pressure.
弹性复归设计,即使是在低压环境下,也能确保球阀与阀座紧密接触
5. Design with a larger ball, to offer the best sealing efficiency.
球阀设计提供了最佳密封效果
6. Upstream relief hole on the ball, preventing any overpressure in the cavity.
上游端球阀泄压孔设计,防止阀腔压力过高
7. Antistatic design
防静电设计
8. Anti-blowout stem design
阀杆防飞出设计
9. ISO 5211 Mounting Pad design.
ISO 5211安装平台设计



Applicable Standards 适用标准

- Body Material(阀体材质): Standard in LCB, LCC, LC9, CF8, CF8M Special materials are available according to requirements.(可依专案定制需求)
- Nominal Size(尺寸): 1/2" to 6" (DN15 to DN150)
- Pressure Rating (压力等级): JIS 10/20K ASME CLASS 150/300 DIN PN16/40
- End Connections(连接型式): RF(法兰凸缘)
- Temperature Range (温度范围): Soft Seat (软密封): -321~356°F (-196~180°C)
Metal Seat(硬密封): -321~661°F (-196~350°C)
- Face-To-Face Dimensions (面间尺寸): JIS B2002 | ASME B16.10 / EN558 SERIES 1/27
- Flange Dimensions(法兰尺寸): JIS B2220 / ASME B16.5 / EN 1092-1
- Body Pressure Testing(本体压力测试): JIS B2003 / API 598
- Seat Leakage Testing(阀座泄漏测试): GB / T 24925 / ISO 28921-1 / BS 6364
- Casting(铸造标准): MSS-SP-25 / MSS-SP-55



Industrial Fields: 应用产业

Oil & Gas
炼油产业

Refinery / Petrochemical
石油精炼/石化业

Chemical
化工业

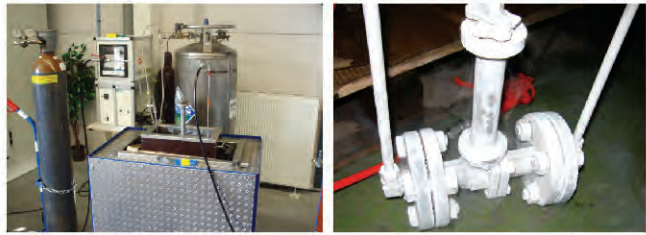
Pulp & Paper
造纸业

Power Plant
造纸业

Steel Mill
炼钢厂

Food
食品业

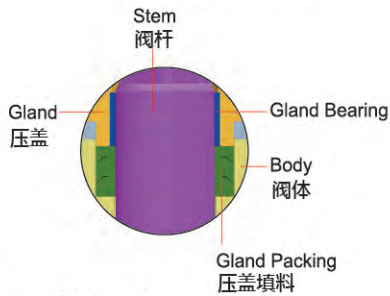
Mining
采矿业



Cryogenic Testing according
低温测试制程·根据规范

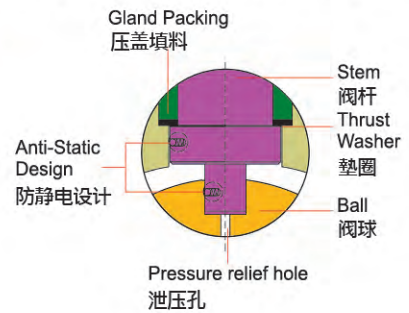
Design & Structure 设计&结构

Gland Packing : Flexible Graphite
压盖填料: 弹性石墨



Gland Packing Area
Graphite gland packing designed for Fire Safe ensures the safety under fire accident.
采用柔性石墨的防火设计,可适用高温场合。

Stem: A276-304 / A276-316

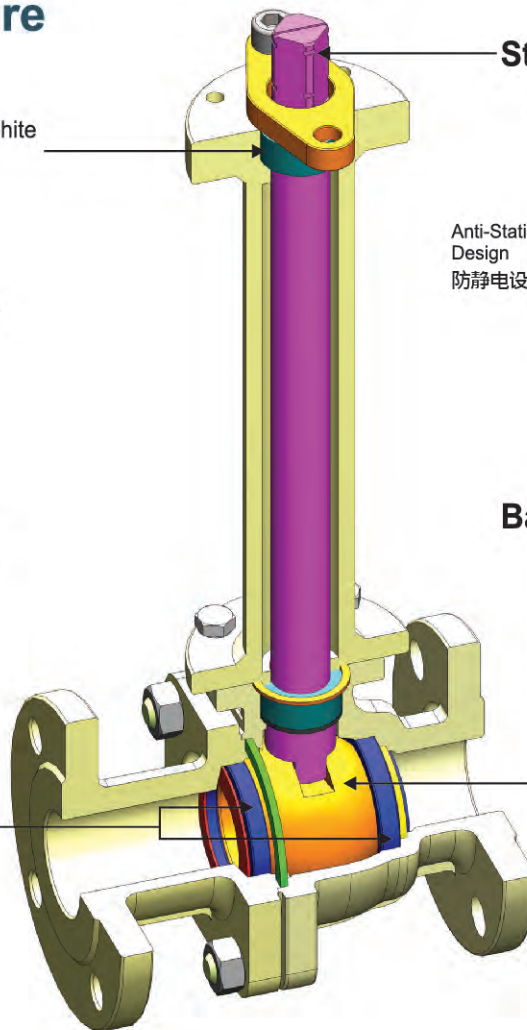


Ball: Stainless Steel
Stainless Steel + Hard Face
Upstream relief hole design

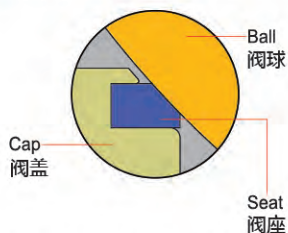


Seat Options:

Soft
Metal

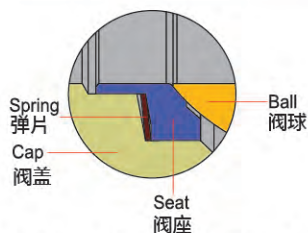


Soft Seat 软密封阀座

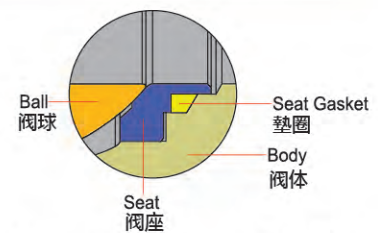


Seat Area (Upstream & Downstream Sides) - Soft Seat

Metal Seat 金属密封阀座



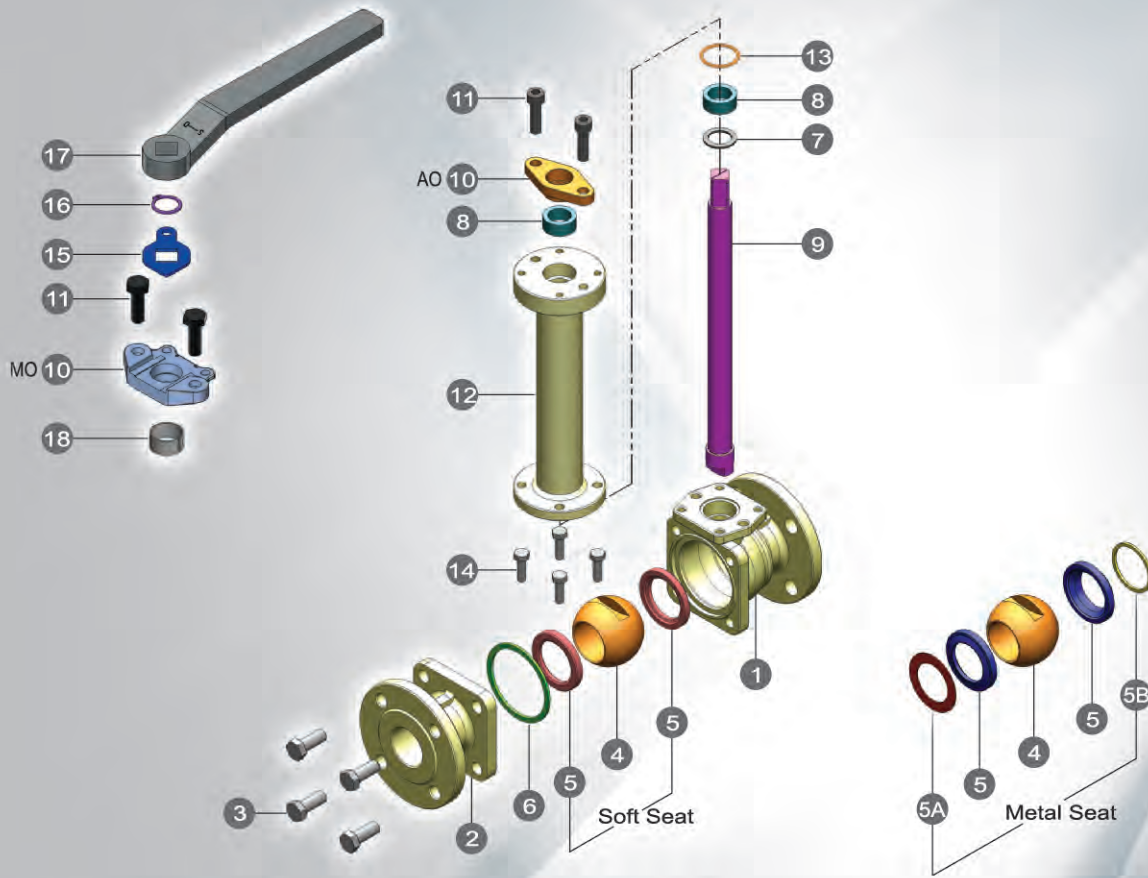
Seat Area (Upstream side) Metal Seat
Seat Spring provides flexibility to piping stress for stabilizing the operation.
具有弹性的弹片设计,当管内压力升高时,也可保持动作稳定



Seat Area (Downstream side) Metal Seat
Seat-Gasket is Pressed-fit into the body and this provides the stability for a wide temperatures range.
垫片采用嵌入阀体设计、可适用于-196到500摄氏度的温度范围。



**JDV
CONTROL
VALVES**



Technical Specifications 技术规范

STANDARD MATERIALS 材质表

| JBF SERIES | | | | | | |
|------------|---------------------|--|-----------|-------------------------------------|-----------|--------------------|
| NO | TYPE | LM | | LH | | |
| | | TEMPERATURE -40~356°F (-40~180°C) | | TEMPERATURE -321~356°F (-196~180°C) | | |
| 1 | BODY 阀体 | A352-LCB/LCC | A351-CF8 | A351-CF8M | A352-LC9 | A351-CF8 A351-CF8M |
| 2 | CAP 阀盖 | A352-LCB/LCC | A351-CF8 | A351-CF8M | A352-LC9 | A351-CF8 A351-CF8M |
| 3 | BOLT&NUT 螺栓&螺母 | A193-B8 & A194-8 | | | | |
| 4 | SOFT BALL 阀球 | A351-CF8 | A351-CF8M | A351-CF8 | A351-CF8M | |
| 5 | SEAT 阀座 | TFM-1600 | | PTCFE | | |
| 6 | BODY GASKET 大薄片 | SS316+GRAPHITE | | | | |
| 7 | THRUST WASHER 小薄片 | METAL+HARD FACE | | | | |
| 8 | GLAND PACKING 中口填料 | GRAPHITE | | | | |
| 9 | STEM 阀杆 | A276-304 | A276-316 | A276-304 | A276-316 | |
| 10 | GLAND 填料压盖 | A351-CF8 | | | | |
| 11 | GLAND BOLT 牛帽螺栓 | STAINLESS STEEL | | | | |
| 12 | BONNET 阀盖 | A276-304 | A276-316 | A276-304 | A276-316 | |
| 13 | BONNET GASKET 阀盖大薄片 | GRAPHITE | | | | |
| 14 | BONNET BOLT 阀盖螺栓 | STAINLESS STEEL | | | | |
| 15 | TRAVEL STOP (MO) 档片 | A240-304 | | | | |
| 16 | SNAP CATCH (MO) 扣环 | AISI 420 | | | | |
| 17 | HANDLE (MO) 把手 | A240-304(1/2"~1") / FCD45(1-1/2"~3") / FCD45+SGP(4" AND ABOVE) | | | | |
| 18 | GLAND BEARING 牛帽衬套 | A240-316+PTFE | | | | |

| JBFM SERIES | | | | | | |
|-------------|---------------------|--|----------|-------------------------------------|--------------------------|--|
| NO | TYPE | LM | | LH | | |
| | | TEMPERATURE -40~661°F (-40~350°C) | | TEMPERATURE -321~661°F (-196~350°C) | | |
| 1 | BODY 阀体 | A352-LCB/LCC | A352-LC9 | A351-CF8 | A351-CF8M | |
| 2 | CAP 阀盖 | A352-LCB/LCC | A352-LC9 | A351-CF8 | A351-CF8M | |
| 3 | BOLT&NUT 螺栓 | A193-B8 & A194-8 | | | | |
| 4 | BALL 阀球 | A351-CF8+HCR ⁽¹⁾ / TC ⁽¹⁾ | | | A351-CF8M+HCR / TC | |
| 5 | METAL SEAT 阀座 | A351-CF8+STELLITE® / TC | | | A351-CF8M+STELLITE® / TC | |
| 5A | SEAT 阀座 | INCONEL® X-750 | | | | |
| 5B | SEAT 阀座大薄片 | GRAPHITE | | | | |
| 6 | BODY GASKET 阀体大薄片 | SS316+GRAPHITE | | | | |
| 7 | THRUST WASHER 小薄片 | METAL+HARD FACE | | | | |
| 8 | GLAND PACKING 中口填料 | GRAPHITE | | | | |
| 9 | STEM 阀杆 | A276-304 | | A276-316 | | |
| 10 | GLAND 填料压盖 | A351-CF8 | | | | |
| 11 | GLAND BOLT 牛帽螺栓 | STAINLESS STEEL | | | | |
| 12 | BONNET 阀盖 | A276-304 | | A276-316 | | |
| 13 | BONNET GASKET 阀盖大薄片 | GRAPHITE | | | | |
| 14 | BONNET BOLT 阀盖螺栓 | STAINLESS STEEL | | | | |
| 15 | TRAVEL STOP (MO) 档片 | A240-304 | | | | |
| 16 | SNAP CATCH (MO) 扣环 | AISI 420 | | | | |
| 17 | HANDLE (MO) 手柄 | A240-304(1/2"~1") / FCD45(1-1/2"~3") / FCD45+SGP(4" AND ABOVE) | | | | |
| 18 | GLAND BEARING 牛帽衬套 | A240-316+PTFE | | | | |

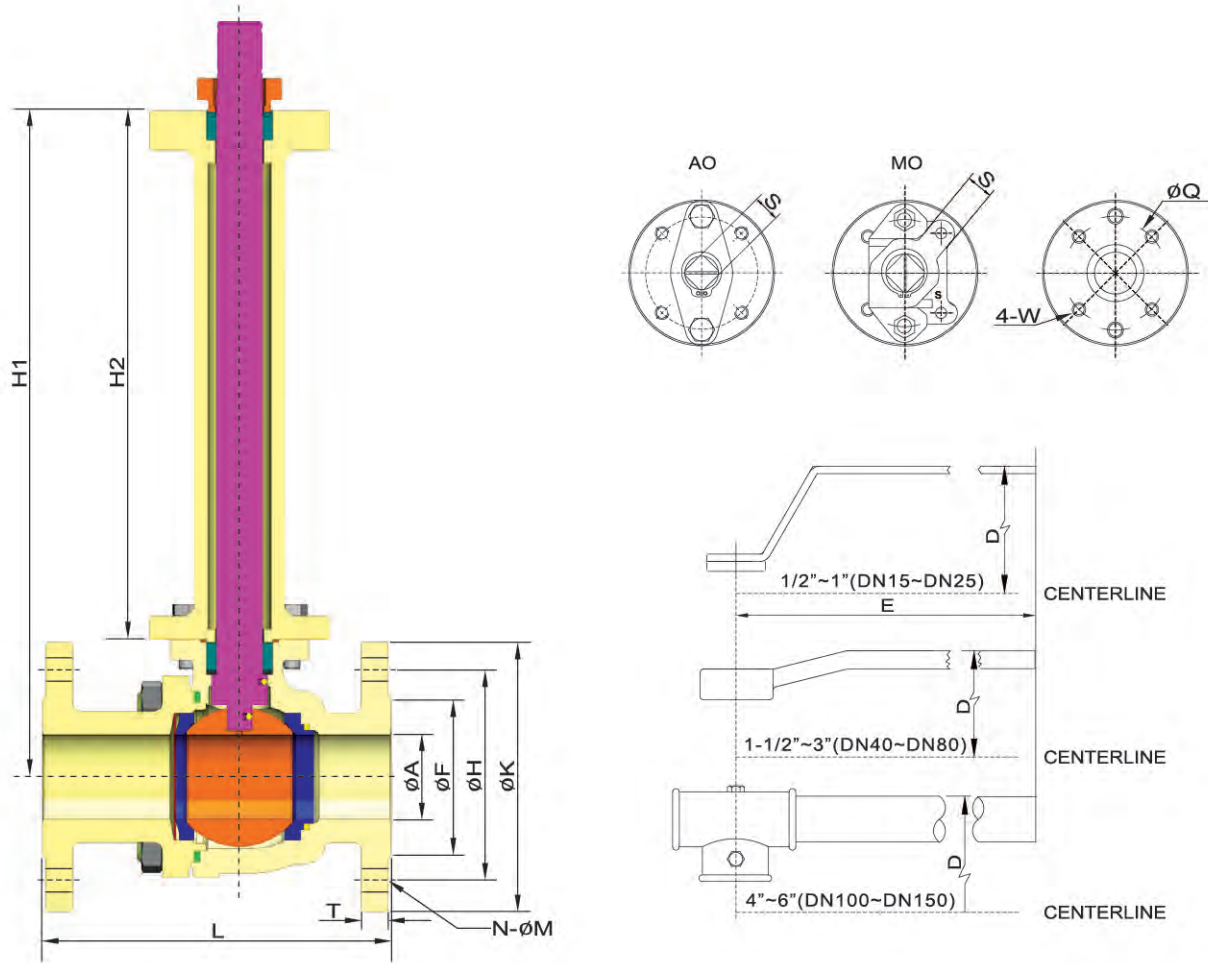
The above materials may be changed with different using conditions.
以上阀门部件的材质为标准配置,可根据客户需求和工况选择其他材质

NOTES:

(1) HCR=Hard Chrome Plated, TC=Tungsten Carbide Coated
镀硬铬 碳化钨喷涂

(2) Extended stem is recommended according to using conditions.

(3) AO:Automation MO:Manual Operation



DIMENSIONS (JIS 10K)

(mm)

| SIZE | A | F | H | K | M | N | L | T | H1 | | H2 | | S | Q | W | D | | E | Wt(Kg) | | |
|------|--------|-----|-----|-----|-----|----|---|-----|-------|------|-------|------|-----|----|-----|-------|------|-----|--------|------|------|
| | | | | | | | | | Short | Long | Short | Long | | | | Short | Long | | Short | Long | |
| 15 | 1/2" | 15 | 51 | 70 | 95 | 15 | 4 | 108 | 12 | 140 | 240 | 100 | 200 | 10 | 42 | M5 | 200 | 300 | 150 | 2.6 | 3 |
| 20 | 3/4" | 20 | 56 | 75 | 100 | 15 | 4 | 117 | 14 | 145 | 245 | 100 | 200 | 10 | 42 | M5 | 205 | 305 | 150 | 3 | 3.4 |
| 25 | 1" | 25 | 67 | 90 | 125 | 19 | 4 | 127 | 14 | 150 | 250 | 100 | 200 | 12 | 50 | M6 | 215 | 315 | 160 | 4.4 | 5 |
| 40 | 1-1/2" | 38 | 81 | 105 | 140 | 19 | 4 | 165 | 16 | 190 | 315 | 125 | 250 | 17 | 70 | M8 | 245 | 370 | 230 | 8.8 | 10 |
| 50 | 2" | 50 | 96 | 120 | 155 | 19 | 4 | 178 | 16 | 200 | 325 | 125 | 250 | 17 | 70 | M8 | 250 | 375 | 230 | 11.5 | 12.7 |
| 65 | 2-1/2" | 65 | 116 | 140 | 175 | 19 | 4 | 190 | 18 | 245 | 395 | 150 | 300 | 20 | 70 | M8 | 295 | 445 | 325 | 16.8 | 18.5 |
| 80 | 3" | 76 | 126 | 150 | 185 | 19 | 8 | 203 | 18 | 250 | 400 | 150 | 300 | 20 | 70 | M8 | 300 | 450 | 325 | 21 | 22.7 |
| 100 | 4" | 100 | 151 | 175 | 210 | 19 | 8 | 229 | 18 | 275 | 425 | 150 | 300 | 27 | 102 | M10 | 370 | 520 | 420 | 34.5 | 37.6 |
| 150 | 6" | 150 | 212 | 240 | 280 | 23 | 8 | 394 | 22 | 345 | 520 | 175 | 350 | 32 | 125 | M12 | 445 | 630 | 565 | 73.3 | 77.8 |

DIMENSIONS (JIS 20K)

(mm)

| SIZE | A | F | H | K | M | N | L | T | H1 | | H2 | | S | Q | W | D | | E | Wt(Kg) | | |
|------|--------|-----|-----|-----|-----|----|----|-----|-------|------|-------|------|-----|----|-----|-------|------|-----|--------|-------|-------|
| | | | | | | | | | Short | Long | Short | Long | | | | Short | Long | | Short | Long | |
| 15 | 1/2" | 15 | 51 | 70 | 95 | 15 | 4 | 140 | 14 | 140 | 240 | 100 | 200 | 10 | 42 | M5 | 200 | 300 | 150 | 3.3 | 3.7 |
| 20 | 3/4" | 20 | 56 | 75 | 100 | 15 | 4 | 152 | 16 | 145 | 245 | 100 | 200 | 10 | 42 | M5 | 205 | 305 | 150 | 4.3 | 4.7 |
| 25 | 1" | 25 | 67 | 90 | 125 | 19 | 4 | 165 | 16 | 150 | 250 | 100 | 200 | 12 | 50 | M6 | 215 | 315 | 160 | 6.1 | 6.8 |
| 40 | 1-1/2" | 38 | 81 | 105 | 140 | 19 | 4 | 190 | 18 | 190 | 315 | 125 | 250 | 17 | 70 | M8 | 245 | 370 | 230 | 12.3 | 13.5 |
| 50 | 2" | 50 | 96 | 120 | 155 | 19 | 8 | 216 | 18 | 200 | 325 | 125 | 250 | 17 | 70 | M8 | 250 | 375 | 230 | 14.6 | 15.8 |
| 65 | 2-1/2" | 65 | 116 | 140 | 175 | 19 | 8 | 241 | 20 | 245 | 395 | 150 | 300 | 20 | 70 | M8 | 295 | 445 | 325 | 26.0 | 27.7 |
| 80 | 3" | 76 | 132 | 160 | 200 | 23 | 8 | 282 | 22 | 250 | 400 | 150 | 300 | 20 | 70 | M8 | 300 | 450 | 325 | 34.8 | 36.5 |
| 100 | 4" | 100 | 160 | 185 | 225 | 23 | 8 | 305 | 24 | 275 | 425 | 150 | 300 | 27 | 102 | M10 | 370 | 520 | 420 | 54.3 | 57.4 |
| 150 | 6" | 150 | 230 | 260 | 305 | 25 | 12 | 403 | 28 | 345 | 520 | 175 | 350 | 32 | 125 | M12 | 445 | 630 | 565 | 109.1 | 113.6 |



DIMENSIONS (ASME CLASS 150)

(mm)

| SIZE | A | F | H | K | M | N | L | T | H1 | | H2 | | S | Q | W | D | | E | Wt(Kg) | | |
|------|--------|-----|-----|-------|-----|----|---|-----|-------|------|-------|------|-----|----|-----|-------|------|-----|--------|------|------|
| | | | | | | | | | Short | Long | Short | Long | | | | Short | Long | | Short | Long | |
| 15 | 1/2" | 15 | 35 | 60.5 | 89 | 16 | 4 | 108 | 11.2 | 140 | 240 | 100 | 200 | 10 | 42 | M5 | 200 | 300 | 150 | 2.6 | 3 |
| 20 | 3/4" | 20 | 43 | 70.0 | 98 | 16 | 4 | 117 | 11.2 | 145 | 245 | 100 | 200 | 10 | 42 | M5 | 205 | 305 | 150 | 3 | 3.4 |
| 25 | 1" | 25 | 51 | 79.5 | 108 | 16 | 4 | 127 | 11.2 | 150 | 250 | 100 | 200 | 12 | 50 | M6 | 215 | 315 | 160 | 4.4 | 5 |
| 40 | 1-1/2" | 38 | 73 | 98.5 | 127 | 16 | 4 | 165 | 14.3 | 190 | 315 | 125 | 250 | 17 | 70 | M8 | 245 | 370 | 230 | 8.8 | 10 |
| 50 | 2" | 50 | 92 | 120.5 | 152 | 19 | 4 | 178 | 15.9 | 200 | 325 | 125 | 250 | 17 | 70 | M8 | 250 | 375 | 230 | 11.5 | 12.7 |
| 65 | 2-1/2" | 65 | 105 | 139.5 | 178 | 19 | 4 | 190 | 17.5 | 245 | 395 | 150 | 300 | 20 | 70 | M8 | 295 | 445 | 325 | 16.8 | 18.5 |
| 80 | 3" | 76 | 127 | 152.5 | 190 | 19 | 4 | 203 | 19.1 | 250 | 400 | 150 | 300 | 20 | 70 | M8 | 300 | 450 | 325 | 21 | 22.7 |
| 100 | 4" | 100 | 157 | 190.5 | 229 | 19 | 8 | 229 | 23.9 | 275 | 425 | 150 | 300 | 27 | 102 | M10 | 370 | 520 | 420 | 34.5 | 37.6 |
| 150 | 6" | 150 | 216 | 241.5 | 279 | 22 | 8 | 394 | 25.4 | 345 | 520 | 175 | 350 | 32 | 125 | M12 | 445 | 630 | 565 | 73.3 | 77.8 |

DIMENSIONS (ASME CLASS 300)

(mm)

| SIZE | A | F | H | K | M | N | L | T | H1 | | H2 | | S | Q | W | D | | E | Wt(Kg) | | |
|------|--------|-----|-----|-------|-----|----|----|-----|-------|------|-------|------|-----|----|-----|-------|------|-----|--------|-------|-------|
| | | | | | | | | | Short | Long | Short | Long | | | | Short | Long | | Short | Long | |
| 15 | 1/2" | 15 | 35 | 66.5 | 95 | 16 | 4 | 140 | 14.3 | 140 | 240 | 100 | 200 | 10 | 42 | M5 | 200 | 300 | 150 | 3.3 | 3.7 |
| 20 | 3/4" | 20 | 43 | 82.5 | 117 | 19 | 4 | 152 | 15.9 | 145 | 245 | 100 | 200 | 10 | 42 | M5 | 205 | 305 | 150 | 4.3 | 4.7 |
| 25 | 1" | 25 | 51 | 89.0 | 124 | 19 | 4 | 165 | 17.5 | 150 | 250 | 100 | 200 | 12 | 50 | M6 | 215 | 315 | 160 | 6.1 | 6.8 |
| 40 | 1-1/2" | 38 | 73 | 114.5 | 156 | 22 | 4 | 190 | 20.7 | 190 | 315 | 125 | 250 | 17 | 70 | M8 | 245 | 370 | 230 | 12.3 | 13.5 |
| 50 | 2" | 50 | 92 | 127.0 | 165 | 19 | 8 | 216 | 22.3 | 200 | 325 | 125 | 250 | 17 | 70 | M8 | 250 | 375 | 230 | 14.6 | 15.8 |
| 65 | 2-1/2" | 65 | 105 | 149.0 | 190 | 22 | 8 | 241 | 25.4 | 245 | 395 | 150 | 300 | 20 | 70 | M8 | 295 | 445 | 325 | 26.0 | 27.7 |
| 80 | 3" | 76 | 127 | 168.0 | 210 | 22 | 8 | 282 | 28.6 | 250 | 400 | 150 | 300 | 20 | 70 | M8 | 300 | 450 | 325 | 34.8 | 36.5 |
| 100 | 4" | 100 | 157 | 200.0 | 254 | 22 | 8 | 305 | 31.8 | 275 | 425 | 150 | 300 | 27 | 102 | M10 | 370 | 520 | 420 | 54.3 | 57.4 |
| 150 | 6" | 150 | 216 | 270.0 | 318 | 22 | 12 | 403 | 36.6 | 345 | 520 | 175 | 350 | 32 | 125 | M12 | 445 | 630 | 565 | 109.1 | 113.6 |

DIMENSIONS (DIN PN16)

(mm)

| SIZE | A | F | H | K | M | N | L | | T | H1 | | H2 | | S | Q | W | D | | E | Wt(Kg) | | |
|----------------------|--------|-----|-----|-----|-----|----|----|-----|-----|-------|------|-------|------|-----|----|-----|-------|------|-----|--------|------|------|
| | | | | | | | S1 | S27 | | Short | Long | Short | Long | | | | Short | Long | | Short | Long | |
| DN 15~DN 50 USE PN40 | | | | | | | | | | | | | | | | | | | | | | |
| 65 | 2-1/2" | 65 | 122 | 145 | 185 | 18 | 4 | 290 | 170 | 18 | 245 | 395 | 150 | 300 | 20 | 70 | M8 | 295 | 445 | 325 | 16.8 | 18.5 |
| 80 | 3" | 76 | 138 | 160 | 200 | 18 | 8 | 310 | 180 | 20 | 250 | 400 | 150 | 300 | 20 | 70 | M8 | 300 | 450 | 325 | 21 | 22.7 |
| 100 | 4" | 100 | 158 | 180 | 220 | 18 | 8 | 350 | 190 | 20 | 275 | 425 | 150 | 300 | 27 | 102 | M10 | 370 | 520 | 420 | 34.5 | 37.6 |
| 150 | 6" | 150 | 212 | 240 | 285 | 22 | 8 | 480 | 350 | 22 | 345 | 520 | 175 | 350 | 32 | 125 | M12 | 445 | 630 | 565 | 73.3 | 77.8 |

DIMENSIONS (DIN PN40)

(mm)

| SIZE | A | F | H | K | M | N | L | | T | H1 | | H2 | | S | Q | W | D | | E | Wt(Kg) | | |
|------|--------|-----|-----|-----|-----|----|----|-----|-----|-------|------|-------|------|-----|----|-----|-------|------|-----|--------|-------|-------|
| | | | | | | | S1 | S27 | | Short | Long | Short | Long | | | | Short | Long | | Short | Long | |
| 15 | 1/2" | 15 | 45 | 65 | 95 | 14 | 4 | 130 | 115 | 16 | 140 | 240 | 100 | 200 | 10 | 42 | M5 | 200 | 300 | 150 | 3.3 | 3.7 |
| 20 | 3/4" | 20 | 58 | 75 | 105 | 14 | 4 | 150 | 120 | 18 | 145 | 245 | 100 | 200 | 10 | 42 | M5 | 205 | 305 | 150 | 4.3 | 4.7 |
| 25 | 1" | 25 | 68 | 85 | 115 | 14 | 4 | 160 | 125 | 18 | 150 | 250 | 100 | 200 | 12 | 50 | M6 | 215 | 315 | 160 | 6.1 | 6.8 |
| 40 | 1-1/2" | 38 | 88 | 110 | 150 | 18 | 4 | 200 | 140 | 18 | 190 | 315 | 125 | 250 | 17 | 70 | M8 | 245 | 370 | 230 | 12.3 | 13.5 |
| 50 | 2" | 50 | 102 | 125 | 165 | 18 | 4 | 230 | 150 | 20 | 200 | 325 | 125 | 250 | 17 | 70 | M8 | 250 | 375 | 230 | 14.6 | 15.8 |
| 65 | 2-1/2" | 65 | 122 | 145 | 185 | 18 | 8 | 290 | 170 | 22 | 245 | 395 | 150 | 300 | 20 | 70 | M8 | 295 | 445 | 325 | 26.0 | 27.7 |
| 80 | 3" | 76 | 138 | 160 | 200 | 18 | 8 | 310 | 180 | 24 | 250 | 400 | 150 | 300 | 20 | 70 | M8 | 300 | 450 | 325 | 34.8 | 36.5 |
| 100 | 4" | 100 | 162 | 190 | 235 | 22 | 8 | 350 | 190 | 24 | 275 | 425 | 150 | 300 | 27 | 102 | M10 | 370 | 520 | 420 | 54.3 | 57.4 |
| 150 | 6" | 150 | 218 | 250 | 300 | 26 | 8 | 480 | 350 | 28 | 345 | 520 | 175 | 350 | 32 | 125 | M12 | 445 | 630 | 565 | 109.1 | 113.6 |

Cv VALUES

| SIZE | DN15 | DN20 | DN25 | DN40 | DN50 | DN65 | DN80 | DN100 | DN125 | DN150 |
|------|------|------|------|--------|------|--------|------|-------|-------|-------|
| | 1/2" | 3/4" | 1" | 1-1/2" | 2" | 2-1/2" | 3" | 4" | 5" | 6" |
| Cv | 27 | 61 | 114 | 268 | 501 | 804 | 1158 | 2118 | 3412 | 5074 |

CERTIFICATES



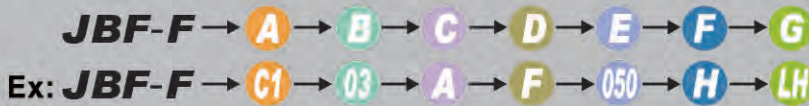
API 6D

ISO 9001

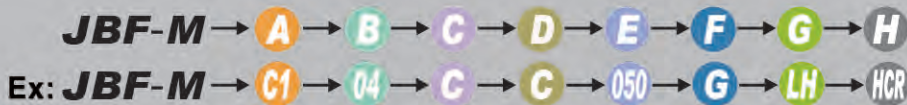
CE

BS6364 TESTING REPORT

HOW TO ORDER



| A. SPECIFICATION | B. BODY MAT'L | C. BALL & STEM MAT'L | D. SEAT MAT'L | E. SIZE | F. OPTION | G. TEMPERATURE |
|--------------------------|------------------|----------------------|---------------|---------------|----------------|------------------------------|
| A1 JIS 10K | 03 CF8 (1.4308) | A CF8 (1.4308) | T TFM-1600 | 015 1/2" | F FIRE SAFE | LM -40~356°F (-40~180°C) |
| A2 JIS 20K | 04 CF8M (1.4408) | C CF8M (1.4408) | F PCTFE | 020 3/4" | I LIVE LOADING | LH -321~356°F (-196°C~180°C) |
| C1 ASME CLASS 150 | 05 CF3 (1.4306) | D CF3 (1.4306) | | 025 1" | H LEVER | |
| C2 ASME CLASS 300 | 06 CF3M (1.4404) | E CF3M (1.4404) | | 032 1-1/4" | G GEAR | |
| D2 DIN PN16 | 07 CG8M (1.4412) | F CG8M (1.4412) | | 040 1-1/2" | A BARE SHAFT | |
| D4 DIN PN40 | 11 LCB (1.1138) | | | 050 2" | | |
| | 12 LCC (1.7219) | | | 065 2-1/2" | | |
| | | | | 080 3" | | |
| | | | | 100 4" | | |
| | | | | 150 6" | | |



| A. SPECIFICATION | B. BODY MAT'L | C. BALL & STEM MAT'L | D. SEAT MAT'L | E. SIZE | F. OPTION | G. TEMPERATURE |
|--------------------------|------------------|----------------------|---------------|---------------|----------------|------------------------------|
| A1 JIS 10K | 03 CF8 (1.4308) | A CF8 (1.4308) | A CF8 | 015 1/2" | F FIRE SAFE | LM -40~661°F (-40~350°C) |
| A2 JIS 20K | 04 CF8M (1.4408) | C CF8M (1.4408) | C CF8M | 020 3/4" | I LIVE LOADING | LH -321~661°F (-196°C~350°C) |
| C1 ASME CLASS 150 | 05 CF3 (1.4306) | D CF3 (1.4306) | D CF3 | 025 1" | H LEVER | |
| C2 ASME CLASS 300 | 06 CF3M (1.4404) | E CF3M (1.4404) | E CF3M | 040 1-1/2" | G GEAR | |
| D2 DIN PN16 | 07 CG8M (1.4412) | F CG8M (1.4412) | F CG8M | 050 2" | A BARE SHAFT | |
| D4 DIN PN40 | 11 LCB (1.1138) | | | 065 2-1/2" | | |
| | 12 LCC (1.7219) | | | 080 3" | | |
| | | | | 100 4" | | |
| | | | | 150 6" | | |

| H. COATING |
|---------------------------------|
| HCR BALL W/HCR SEAT W/STELLITE® |
| CR BALL W/TC SEAT W/TC |

HOW TO ORDER

※ Alternative materials are available on request.
 * 阀内件均做相应的硬化处理, 以上内件为基材



■ HEADQUARTERS

NO. 6-1, QINGNIAN RD., YANGMEI DIST., TAOYUAN CITY 326, TAIWAN
TEL +886-3-4965066 FAX +886-3-4963526 E-MAIL: sales@jdv.com.tw



Copyright 2021/05. All rights are reserved by JDV.
The technical data and content may be changed without prior notice.