



JDV
CONTROL
VALVES

JTD Series

High Performance Double Eccentric Butterfly Valve





**JDV
CONTROL
VALVES**

JTD Series

High Performance Double Eccentric Butterfly Valve

JTD Series butterfly valve is designed in the double eccentric disc concept. This design reduces the seating wear caused by disc camming action during closing to the minimum and provides the superior throttling characteristics. Options of soft seat or metal seat offers wider using range under different conditions.

PRODUCT FEATURES 产品特点

- Integrally seat liner on the body provides excellent stability and guarantees the seat tightness.
- Seat liner extending on the contact faces ensures perfect sealing and eliminates the need for separate flange gaskets.
- Unique triple sealing system for shaft sealing ensures zero leakage of the media passing shaft seals.
- Narrow land disc ensures perfect sealing with least operating torque requirements.
- A fully universal body design ensures fitment of the valve between companion flanges of all popular standards.
- A ten positions notch disc and handle lever ensures locking of the valve in 8 intermediate positions except closed and open position. Handle lever lockable through pad lock for tamper proof positioning.
- A truly line size body bore ensures the maximum flow capacity with the lowest pressure drop.
- Both top and bottom shaft swiveling are guided by self-lubricated PTFE bearings.
- Fool proof handle lever designed to prevent accidental pinching of hand between the handle and locking lever.

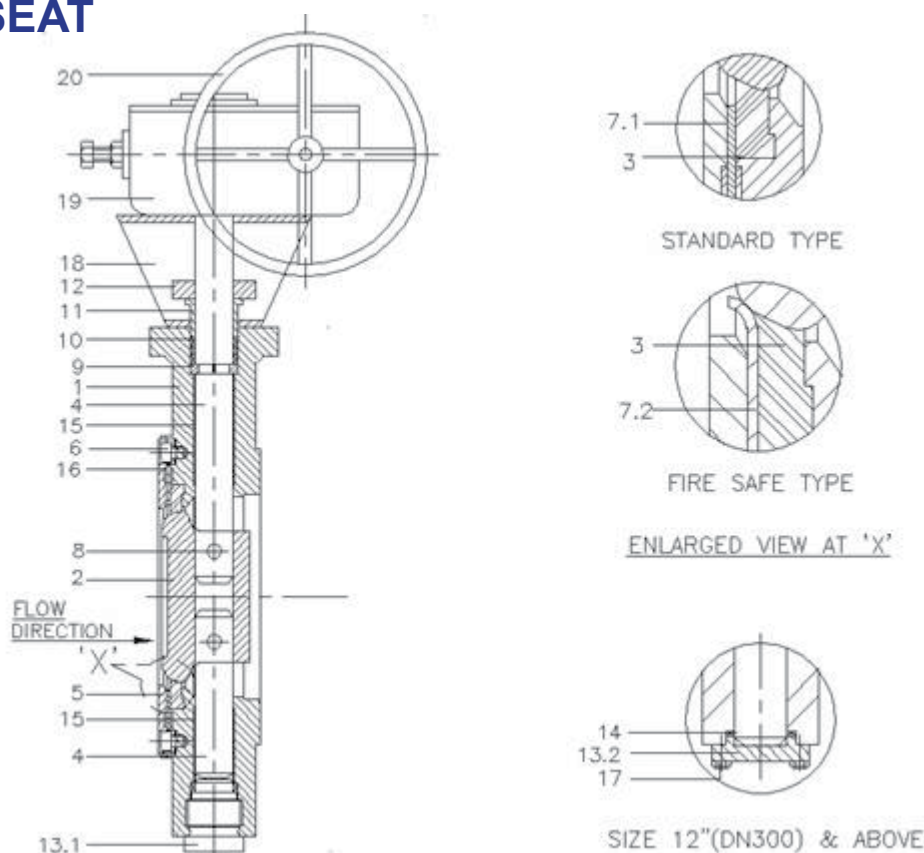
Applicable Standards 依据标准

- Body: Material: Standard in WCB/CF8/CF8M
(Special material is available acc. to requirements.)
- Seat: PTFE / G-PTFE / Metal
- Nominal size: 2" to 72" (DN80 to DN1800)
- General design and manufacturing: API 609 Category B
- Pressure Rating: ANSI 150LB
- Pressure Temperature Rating: API B16.34
- End Connection: Wafer / Wafer Lugged
- Temperature Range: -196 Deg C to 600 Deg C
- Face to Face Dimension: API 609 Category B / ANSI B16.10
- Flanged Dimension: ANSI B16.5 Class 150
- Fire Safe Test: API 607
- Pressure Test Rating: API 598 / ANSI/FCI 70-2
- Seat Leakage: Soft Seat: Class VI
Metal Seat: Class V
- Casting: MSS-SP-67



TECHNICAL SPECIFICATION 技术资料

SOFT SEAT



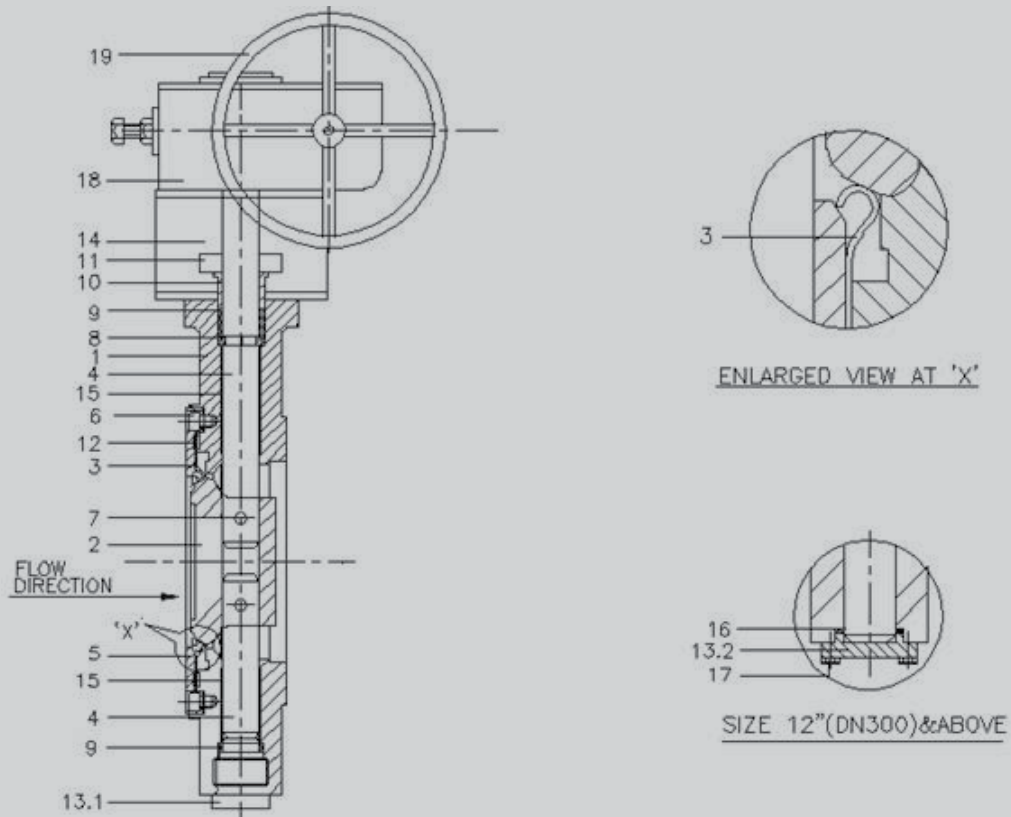
MATERIAL

NO.	PART NAME	MATERIAL		
1.	BODY	WCB	CF8	CF8M
2.	DISC	WCB/CF8/CF8M	CF8/CF8M	CF8M
3.	SEAT	PTFE/G-PTFE/C-PTFE	PTFE/G-PTFE/C-PTFE	PTFE/G-PTFE/C-PTFE
4.	SHAFT	AISI 410/AISI 316	AISI 316	AISI 316
5.	CLAMPING RING	AISI 304	AISI 304	AISI 316
6.	SOC. HD SCREW	AISI 304	AISI 304	AISI 304
7.1	SUPPORT RING	AISI 316	AISI 316	AISI 316
7.2	BACKUP RING-FOR FIRE SAFE	INCONEL 625	INCONEL 625	INCONEL 625
8.	TAPER PIN	AISI 316	AISI 316	AISI 316
9.	SPLIT RING	AISI 316	AISI 316	AISI 316
10.	GLAND PACKING	GRAFOIL	GRAFOIL	GRAFOIL
11.	GLAND	AISI 316	AISI 316	AISI 316
12.	GLAND FLANGE	CF8/CF8M	CF8/CF8M	CF8/CF8M
13.1	BOTTOM PLUG	AISI 304	AISI 304	AISI 304
13.2	BOTTOM COVER	C-15/MS	AISI 316	AISI 316
14.	BOTTOM PACKING	GRAFOIL	GRAFOIL	GRAFOIL
15.	BEARING	ST.STEEL+PTFE	ST.STEEL+PTFE	ST.STEEL+PTFE
16.	PACKING RING	GRAFOIL	GRAFOIL	GRAFOIL
17.	BRACKET	MS	AISI 304	AISI 304
18.	HEX BOLT	AISI 304	AISI 304	AISI 304
19.	WORM GEAR	CAST IRON	CAST IRON	CAST IRON
20.	HANDWHEEL	STEEL	STEEL	STEEL

NOTES: BOTTOM PLUG IS LIMITED UPTO 250 NB VALVE SIZE. SIZE 300 NB AND ABOVE WILL BE WITH BOTTOM PLATE.



METAL SEAT

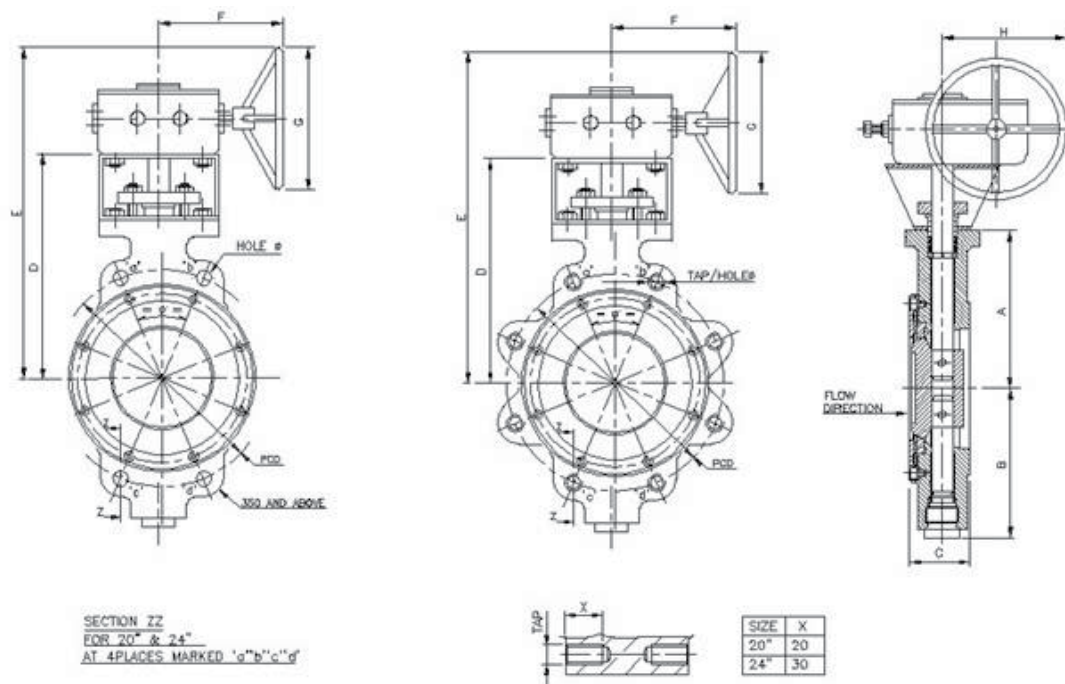


MATERIAL

NO.	PART NAME	MATERIAL		
		WCB	CF8	CF8M
1.	BODY	WCB	CF8	CF8M
2.	DISC	WCB/CF8/CF8M	CF8/CF8M	CF8M
3.	SEAT	INCONEL 625	INCONEL 625	INCONEL 625
4.	SHAFT	AISI 410/AISI 316	AISI 316	AISI 316
5.	CLAMPING RING	AISI 304	AISI 304	AISI 316
6.	SOC. HD SCREW	AISI 304	AISI 304	AISI 304
7.	TAPER PIN	AISI 316	AISI 316	AISI 316
8.	SPLIT RING	AISI 316	AISI 316	AISI 316
9.	GLAND PACKING	AISI 316	AISI 316	AISI 316
10.	GLAND	GRAFOIL	GRAFOIL	GRAFOIL
11.	GLAND FLANGE	CF8/CF8M	CF8/CF8M	CF8/CF8M
12.	PACKING RING	GRAFOIL	GRAFOIL	GRAFOIL
13.1	BOTTOM PLUG	WCB/STEEL	AISI 316	AISI 316
13.2	BOTTOM COVER	WCB/STEEL	AISI 316	AISI 316
14.	BRACKET	MS	AISI 304	AISI 304
15.	BEARING	AISI316/INCONEL	AISI316/INCONEL	AISI316/INCONEL
16.	BOTTOM PACKING	GRAFOIL	GRAFOIL	GRAFOIL
17.	SCREW	AISI 304	AISI 304	AISI 304
18.	WORM GEAR	CAST IRON	CAST IRON	CAST IRON
19.	HANDWHEEL	STEEL	STEEL	STEEL

NOTES: BOTTOM PLUG IS LIMITED UPTO 250 NB VALVE SIZE.SIZE 300 NB AND ABOVE WILLB E WITH BOTTOM PLATE.

SOFT SEAT



DIMENSION FOR STANDARD TYPE (JTD-C1 SERIES ANSI-150LB)

SIZE	A	B	C	D	E	F	G	H	PCD	WAFER HOLE Ø	LUG		Ø°	
											TAP	LUGS		
3"	80	130	125	48	193	320	195	175	127	152.4	19.1	M16	4	90
4"	100	145	135	54	205	332	195	175	127	190.5	19.1	M16	8	45
5"	125	157	150	57	217	382	242	250	182	215.9	22.4	M20	8	45
6"	150	175	168	57	235	400	242	250	182	241.3	22.4	M20	8	45
8"	200	200	195	64	260	425	285	250	182	298.5	22.4	M20	8	45
10"	250	265	245	71	325	542	285	350	252	362	25.4	M22	12	30
12"	300	290	272	81	370	586	285	350	252	431.8	25.4	M22	12	30
14"	350	310	290	92	410	755	365	600	388	476.3	28.5	M27	12	30
16"	400	370	360	102	470	842	365	600	432	539.8	28.5	M27	16	22.5
18"	450	390	380	114	490	862	365	600	432	577.9	31.8	M30	16	22.5
20"	500	420	410	127	520	840	395	500	445	635	31.8	M30	20	18
24"	600	500	490	154	600	935	420	500	500	749.3	35.1	M33	20	18

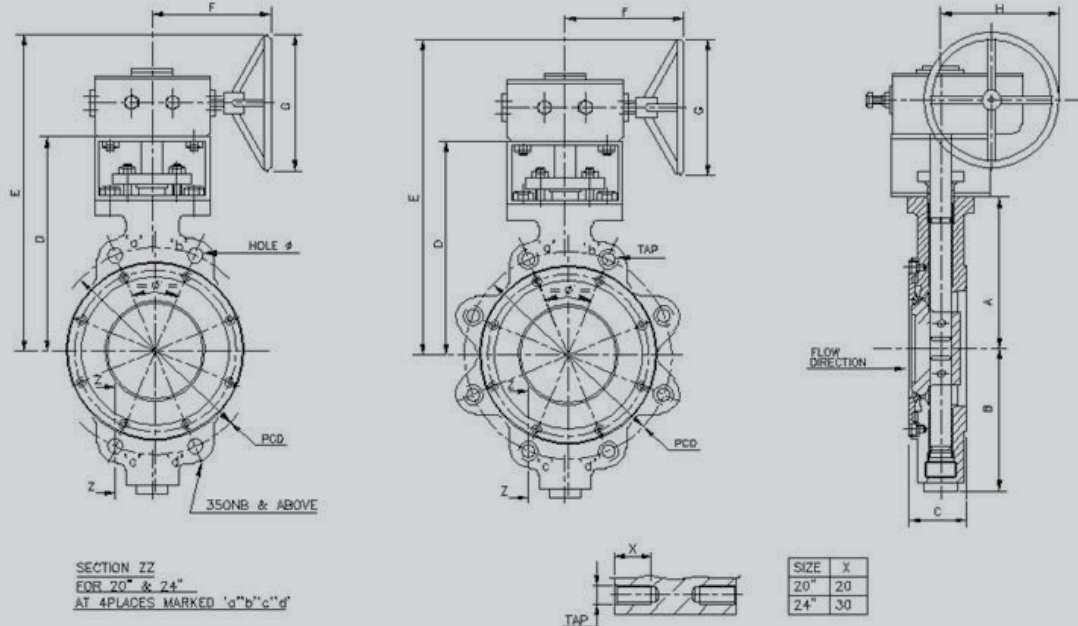
DIMENSION FOR FIRE SAFE TYPE (JTD-C1 SERIES ANSI-150LB)

SIZE	A	B	C	D	E	F	G	H	PCD	LUG		Ø°	
										TAP	LUGS		
3"	80	130	125	48	193	320	195	175	127	152.4	M16	4	90
4"	100	145	135	54	205	332	195	175	127	190.5	M16	8	45
5"	125	157	150	57	217	382	242	250	182	215.9	M20	8	45
6"	150	175	168	57	235	400	242	250	182	241.3	M20	8	45
8"	200	200	195	64	260	425	285	250	182	298.5	M20	8	45
10"	250	265	245	71	325	542	285	350	252	362	M22	12	30
12"	300	290	272	81	370	715	365	600	388	431.8	M22	12	30
14"	350	310	290	92	410	755	365	600	388	476.3	M27	12	30
16"	400	370	360	102	470	842	365	600	432	539.8	M27	16	22.5
18"	450	390	380	114	490	862	365	600	432	577.9	M30	16	22.5
20"	500	420	410	127	520	855	420	500	500	635	M30	20	18
24"	600	500	490	154	600	935	420	500	500	749.3	M33	20	18



**JDV
CONTROL
VALVES**

METAL SEAT TYPE



DIMENSION FOR METAL SEAT TYPE (JTD-C1 SERIES ANSI-150LB)

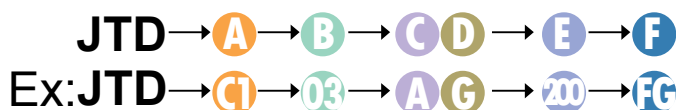
SIZE	A	B	C	D	E	F	G	H	PCD	WAFER	LUG		Ø°	
										HOLE Ø	TAP	LUGS		
3"	80	130	125	48	193	320	195	175	127	152.4	19.1	M16	4	90
4"	100	145	135	54	205	332	195	175	127	190.5	19.1	M16	8	45
5"	125	157	150	57	217	382	242	250	182	215.9	22.4	M20	8	45
6"	150	175	168	57	235	400	242	250	182	241.3	22.4	M20	8	45
8"	200	200	195	64	260	476	285	350	252	298.5	22.4	M20	8	45
10"	250	265	245	71	325	542	285	350	252	362	25.4	M22	12	30
12"	300	290	272	81	370	715	365	600	388	431.8	25.4	M22	12	30
14"	350	310	290	92	410	755	365	600	388	476.3	28.5	M27	12	30
16"	400	370	360	102	470	842	365	600	432	539.8	28.5	M27	16	22.5
18"	450	390	380	114	490	862	365	600	432	577.9	31.8	M30	16	22.5
20"	500	420	410	127	520	855	420	500	500	635	M30	M30	20	18
24"	600	500	490	154	600	935	420	500	500	749.3	M33	M33	20	18



SIZE		Breakaway Torque At 10 Bar Shut Off Pressure			Breakaway Torque At 20 Bar Rated		
		STD TYPE	FIRE SAFE	METAL SEAT	STD TYPE	FIRE SAFE	METAL SEAT
3"	80	40	48	52	48	58	62
4"	100	80	96	104	96	115	125
5"	125	100	120	130	134	161	174
6"	150	153	184	199	220	264	286
8"	200	287	344	373	393	472	511
10"	250	452	542	588	617	740	802
12"	300	578	694	751	835	1002	1085
14"	350	887	1064	1153	1270	1524	1651
16"	400	1026	1231	1334	1722	2066	2239
18"	450	1339	1607	1741	2000	2400	2600
20"	500	2104	2525	2735	2870	3444	3731
24"	600	2957	3548	3844	4243	5092	5516

Remarks:

1. The torque values published are the breakaway torques for the given sizes and are considered as the maximum torque compared to any other position.
2. JTD valves are rated for ANSI 150 class pressure ratings as per ANSI B 16.34 standards.
3. However, in order to optimize on the actuator selection, a set of reduced torque values are given for lower shut off pressure of 10 bar.
4. Consider 20% factor of safety on the published values for actuator selection (i.e. actuator torque required = 1.2 x published value) for Soft Seat Type and 30% for Metal Seat Type.
5. JTD model valves closes precisely at a 0° position and mechanical stoppers are provided on the valve to ensure zero position. An adjustable over stroke in the actuator is desirable for obtaining precise closing of the valve.



A. SPECIFICATION

A1 JIS 10K

C1 ANSI 150LB

D1 DIN PN10

D2 DIN PN16

B. BODY MAT'L

02 WCB

03 CF8

04 CF8M

05 CF3

06 CF3M

07 CG8M

08 CG3M

11 LCB

12 LCC

C. DISC & SHAFT MAT'L

W WCB

A CF8

C CF8M

D CF3

E CF3M

F CG8M

H CG3M

D. STEM MAT'L

P PTFE

G GLASS FIBER15%+ PTFE

C CARBON 15%+PTFE

M INCONEL 600

E. SIZE

080 3"

100 4"

125 5"

150 6"

200 8"

250 10"

300 12"

350 14"

400 16"

450 18"

500 20"

600 24"

F. OPTION

F FIRE SAFE

L LONG STEM

I LIFE LOADING

L LEVER

G GEAR

HOW TO ORDER 如何选购



台湾进典工业股份有限公司

台湾桃园县新屋乡新荣路292巷2-2号

Tel:886-3-4203366 Fax:886-3-4202266 E-mail:webmaster@jdv.com.tw

<http://www.jdv.com.tw>

上海进典控制阀有限公司

上海闵行区浦江高科技园三鲁公路3585号第4幢

Tel:86-21-64296118 Fax:86-21-64297088 E-mail:webmaster@jdv.com.cn

JDV-北京办事处

北京朝阳区建国路93号万达广场4号楼2608室

Tel:86-10-58208918 Fax:86-10-58208918*12 E-mail:eric.wu@jdv.com.cn

JDV-成都办事处

成都市锦江区成都万达广场5单元2202室

Tel:86-28-84191701 Fax:86-28-84191701*602 E-mail:mojianjun@jdv.com.cn

Copyright 2009/12. All rights are reserved by JDV. Technical data and content may be changed by JDV as necessary

